

para los niños



for the children

# NUESTRA HISTORIA

HONORING THE PAST. TRANSFORMING FUTURES.

 LOOK FOR LINKS TO LEARN MORE!

ANNUAL REPORT  
FY 2024-2025







## TABLE OF CONTENTS

4	Letter from the CEO & Board Chair
6	Who we Serve
8	What we Do
10	Impact <ul style="list-style-type: none"><li>Early Childhood Education</li><li>Charter Schools</li><li>Youth Workforce Services</li><li>Family Services</li><li>Mental Health</li><li>Community Transformation</li></ul>
24	Happy Highlights
26	Timeline
28	How we Celebrate
30	Our Voice
34	Our Leaders
36	Our Staff
38	Our Financials
40	Our Supporters
50	How to Get Involved



## LETTER FROM THE CEO & BOARD CHAIR

Dear Para Los Niños Supporters,

Like the families we partner with, our story as an organization is defined by moments of great joy, immense pride, and incredible persistence.

Celebrating our 45<sup>th</sup> anniversary in 2025, we are in a time of reflection as well as forward-facing momentum. In 1980, we started with a single converted warehouse that became a space of safety, warmth, and hope for little ones living in Skid Row. Today, with 16 locations across L.A. County serving more than 10,000 children, youth and their families, we are proud to have remained a haven for our community.

We began the fiscal year advocating for and securing more resources for unhoused families; at the halfway mark, we supported staff and community members impacted by fires that ravaged so much of our beloved county; and we ended the year launching the Para Los Niños Staff & Family Emergency Fund to support those confronting unimaginable hardships due to the terror of inhumane and unjust immigration enforcement actions.

Despite the challenges our 45<sup>th</sup> year held, in this report, you will read triumphant stories of individuals coming to PLN for one thing they felt they could achieve—be it earning a GED, securing childcare, or attending a community meeting—and unexpectedly having their whole lives changed.

As we face a new set of uncertainties, we remain steadfast in our commitment to the evolving needs of our communities. We are

more resolute than ever that we can meet this moment if we lean into our values and the goals set forth in our strategic plan: building systems that connect more people to PLN's network of support, raising our voice on issues that matter most to our families, and investing in our incredible staff—many of whom represent the communities we serve.

These kinds of success stories don't happen by chance. They happen through decades of building strong partnerships across public and private sectors, uplifting hundreds of dedicated and compassionate professionals, and engaging thousands of supporters like you, whose deep commitment to your neighbors has transformed generations of Angelenos.

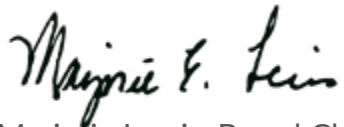
This is OUR story, nuestra historia: yours, mine, and every person's impacted by our work together.

Thank you for your support as we turn the page to our next chapter of love, light, and resilience.

With gratitude,



Drew Furedi, President & CEO



Marjorie Lewis, Board Chair



## WHO WE SERVE

At Para Los Niños, we serve powerful communities with rich cultural traditions and strong family ties.

Children of every race, religion, sexual orientation, gender identity or immigration status deserve the opportunity to reach their full potential. Sustainable academic achievement, capacity for healing, and economic mobility can only be achieved when children's families are equipped with the resources necessary to help them thrive. That's why we offer programming to support people from birth through adulthood, meeting multiple needs at many stages of life.



 [FULL LIST OF PLN LOCATIONS](#)



**10,000+**

Children, youth, families, and community members served annually

**6 WEEKS –  
82 YEARS OLD**

The age range of those receiving services through our programs

**16**

Locations across Los Angeles, including mental health, workforce development, and family service centers

**900+**

Children enrolled in our early education centers, charter elementary and middle schools

**20%**

of students from early head start to 8<sup>th</sup> grade are unhoused

**100%**

of youth from our Youth Workforce Services who enrolled in college were first-generation students

**90%**

of families served through our programs make less than \$50,000 a year

**97%**

of those served in our student and community services department identify as people of color

**~93%**

of families served by PLN live in areas with the highest levels of food insecurity and homelessness\*

*\*Service Planning Areas 4 and 6: Communities, including Downtown LA/Skid Row, West Lake/Pico-Union, Boyle Heights, Hollywood, and South Los Angeles, have the highest levels of food insecurity and homelessness in LA County.*





## WHAT WE DO

### EDUCATION

#### *Early Childhood and TK-8th Grade Education*

We provide high-quality academic instruction that keep babies, preschoolers, and TK-8th grade students intellectually enriched. Our wraparound social-emotional education and expanded learning opportunities build character and confidence.

### MULTI-GENERATIONAL SUPPORT

#### *Youth Workforce, Mental Health, and Family Services*

We provide skill-building opportunities such as workshops, mentorship, and internships for youth as well as case management and mental health resources for children, youth, and their caregivers to set them up for success in school, work, and life.

### COMMUNITY TRANSFORMATION

#### *Partnerships, Leadership, and Advocacy*

We bring together community residents, local organizations, city and county departments, elected officials, and businesses, to advocate for more equitable systems for all.

## REACH

### EARLY CHILDHOOD EDUCATION

**294**

Children 6 weeks to 5 years old supported through Early Head Start & Head Start

### CHARTER SCHOOLS

**595**

Children supported through TK–8th grade education

### YOUTH WORKFORCE SERVICES

**1,110**

Youth 14 to 24 years old supported through college & career preparedness

### STUDENT & COMMUNITY SERVICES

**1,705**

Children and adults supported through Mental Health & Family Services

### TRANSFORMATION COLLECTIVE

**2,742**

Neighborhood residents & community partners empowered through education & advocacy

### FAMILY MEMBERS SERVED

**10,000+**

Through concrete needs distributions, utility bill or rent assistance, caregiver engagement events, & other community learning opportunities beyond direct services.

## IMPACT

From babies in our early education centers to elders supported by our community transformation work, we make a meaningful difference for families by shifting the narrative about our communities. We are proud to work together to reach families' educational, emotional and economic goals.

**91%**

of infants and toddlers in early education programs met or exceeded developmental milestones

**37%**

increase in elementary students meeting or exceeding grade-level expectations for math in FY25

**\$1,508,561**

wages paid to youth interns

**18,368**

hours of mental health therapy provided

**82%**

of caregivers who participated in family services programs increased skills, attitudes, and behaviors that promote family safety & wellbeing

**608**

community members participated in 32 advocacy capacity-building sessions

## CONCRETE SUPPORTS

**\$222,134**

distributed to support housing stability

**\$117,300**

distributed via grocery gift cards to fight food insecurity

**\$178,000**

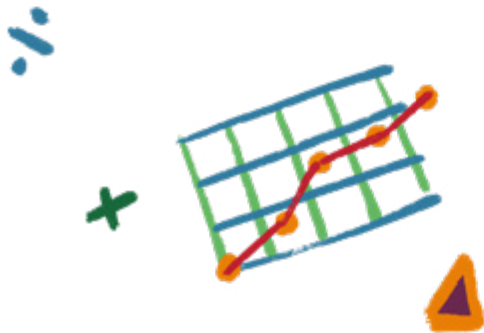
of in-kind support distributed, such as backpacks, clothing, and self-care kits

**1,174**

food boxes distributed

**2,423**

cleaning supply boxes distributed





## JUSSELLE'S STORY

PLN career advisor, Brenda, met Jusselle last year when she was looking for support in credit recovery so she could obtain her high school diploma. Not only has she re-engaged in lifelong learning, but she also has enhanced her economic mobility through PLN's Youth Workforce Services which allows her to provide for her 3-year-old daughter, Alinna. It was clear to Brenda that, while PLN's YWS program focused on her economic stability through education, job placement, and housing stabilization, she needed support for the circumstances that led to such a difficult situation. So, Brenda referred her to Jocelyn in PLN's United Mental Health Promoter program.

Jusselle's priority has always been making sure her daughter was going to be safe and healthy. Her PLN care coordinator, Joceyln, felt fortunate to have been able to provide items that helped Jusselle take care of Alinna, including legal support to gain full custody, a car seat, grocery gift cards, and preschool. But, Jusselle needed to be okay too, so Jocelyn referred her to Erika in PLN's Domestic Violence Support Services program.

In this program, Jusselle will have the opportunity to increase awareness of the impact and trauma domestic violence has had in her life. Jusselle has been connected to a case manager who can assist her with supportive services to navigate any barriers she faces as she breaks the cycle of violence. Jusselle is resilient, advocates for herself, and knows what she needs to do to meet her goals. She is an example to her younger siblings and, above all, to her beautiful daughter. Despite the challenges in her path, her story proves that nothing is impossible with the right team in your corner.

***“We’re getting the support we need to heal together. I’m proud of all the work I’ve done to create a new path for me and my daughter, supported by my team at Para Los Niños. My hope is to be a good example to my daughter, to never give up, and to believe that better is possible.” —Jusselle***



## EARLY CHILDHOOD EDUCATION

At our seven early childhood education centers, we serve children from six weeks to five years old through Head Start, Early Head Start, and California State Preschool programs. Through these comprehensive programs, babies and toddlers don't just receive high-quality preparation for kindergarten, their families also benefit from: Support from Family Specialists who help navigate housing, food, and transportation; access to mental health services for children and caregivers; developmental screenings, referrals, and early interventions; direct material support like diapers, groceries, and clothing; connections to legal services, job training, public benefits and so much more.

Each of our centers offers a warm and nurturing space, especially within neighborhoods like Skid Row where our first early education center opened 45 years ago and remains. Birth to five years old is a crucial age range during which the foundation for lifelong learning and success is built. Our littlest learners require specialized equipment, curriculum, and care.

## MARISOL'S STORY

PLN's early education model is grounded in the belief that a child's development cannot be separated from the wellbeing of their family. Through PLN's Early Education program, Marisol's sons thrived in the classroom while she built a network of support. She attributes this to the trusting relationship she built with her son's PLN teacher, Ms. Carla. "The teachers were amazing," Marisol says. "They treated us with so much care. Miss Carla would even walk with me, have coffee with me. I could talk to her about everything." When Marisol expressed a need for mental health care, both she and her son were referred to therapy services. When she disclosed that her family was facing possible eviction, PLN staff responded with compassion and connection, offering guidance and concrete support that stabilized their living conditions during a time of deep uncertainty. Marisol's story shows that trusting relationships are key to understanding and addressing the full picture of a family's needs.

*"They always listened. Whatever I said I needed for my kids, they were on top of it."*  
—Marisol



**91%**

of infants and toddlers met or exceeded developmental milestones in FY25

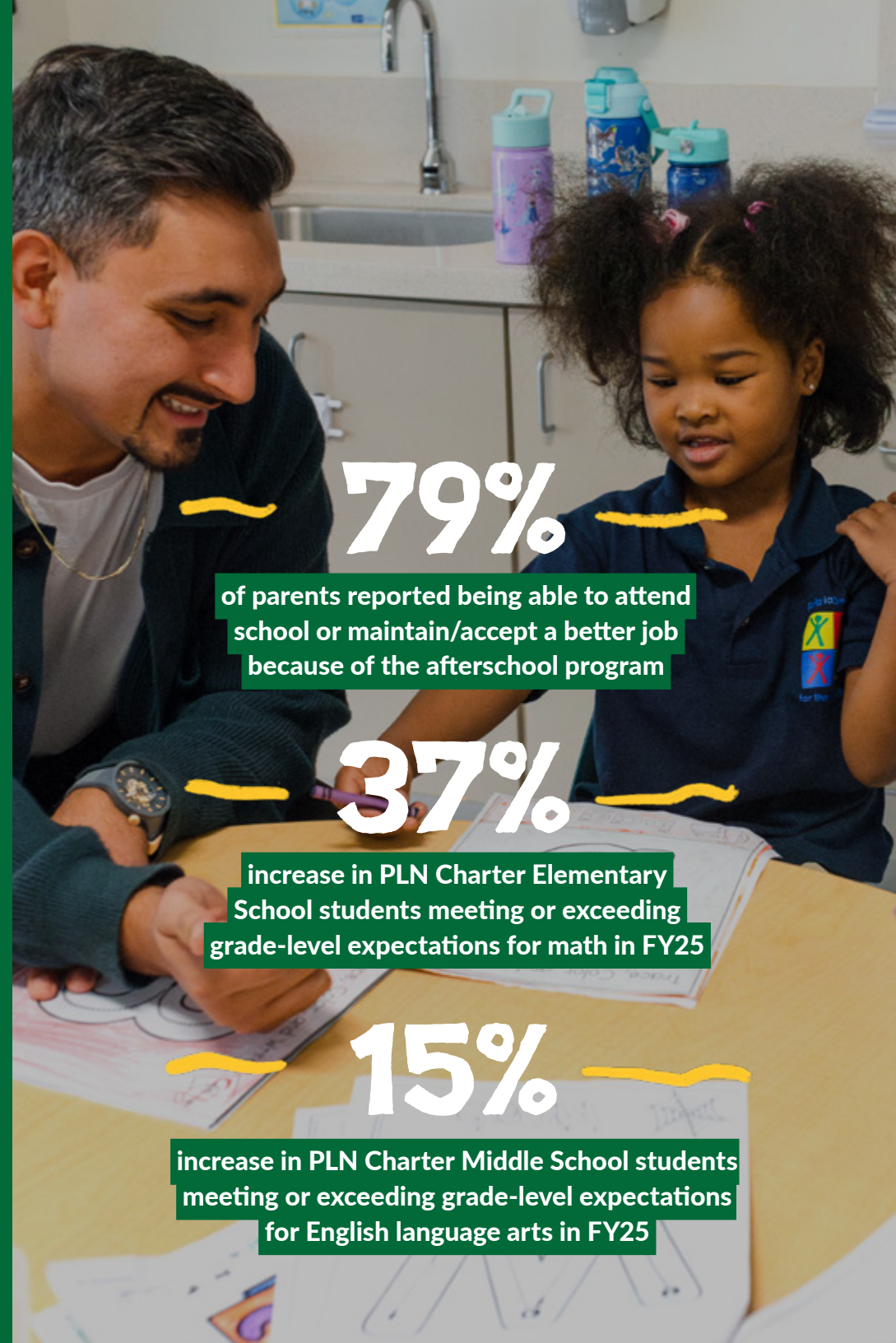
 [LEARN MORE ON THE PLN BLOG](#)

## ALEJANDRA'S STORY

In June 2025, Para Los Niños Charter Middle School celebrated this year's 8<sup>th</sup> grade culmination, a time of great pride for our educators and families who have seen our scholars work so hard to achieve their goals. This year was particularly special because it marked the first year that PLN recognized Legacy Scholars—students who attended a PLN early education center, Charter Elementary School, and Charter Middle School.

This year's 8<sup>th</sup> grade valedictorian and Legacy Scholar, Alejandra, maintained a 4.0 GPA all three years at PLN Charter Middle School, but "what makes her shine even more is her kindness, her thoughtfulness, and her generous spirit... a bright light in our community and an inspiration to us all," said CMS English teacher Ms. Alexander. "My educational journey with Para Los Niños began when I was four years old, and I have been fortunate to receive my entire education within this community," said Alejandra in her speech to her classmates and their families. Her story is just getting started, and already, she has achieved so much. We look forward to continuing to support Alejandra in reaching her full potential.

*"From the beginning, I valued the trust and connection with my teachers and classmates. Throughout my years here, the PLN community has inspired me to strive for excellence, an invaluable lesson I will always carry with me."*  
—Alejandra



79%

of parents reported being able to attend school or maintain/accept a better job because of the afterschool program

37%

increase in PLN Charter Elementary School students meeting or exceeding grade-level expectations for math in FY25

15%

increase in PLN Charter Middle School students meeting or exceeding grade-level expectations for English language arts in FY25



## CHARTER SCHOOLS

As proud California Community Schools, Para Los Niños charter schools serve 595 school-age children in transitional kindergarten (TK) through 8<sup>th</sup> grade in the Fashion District of Downtown L.A. At PLN, our scholars—including multilingual learners, students receiving special education services, and children experiencing homelessness—bring complex and unique needs that inspire us to provide a rigorous, inclusive curriculum. With relationships at the foundation of everything we do, our teachers support the social emotional needs of our scholars first, as well as use data-informed, culturally responsive instruction to ensure every student is both challenged and supported. We believe that children learn best when they are taught holistically, within the context of their lives. Across our schools, counselors, social workers, and family support specialists coordinate resources, promote consistent attendance, and strengthen the vital partnerships between home and school.

PLN's Expanded Learning program offers enrichment opportunities for students before and after school as well as during fall, winter, spring and summer breaks. The program not only provides nutritious meals, but also extends students' learning through engaging, hands-on experiences that foster creativity, connection, and joy. Activities include everything from arts and music to robotics; this year, field trips included a visit to the African American Firefighter Museum, attending an LAFC soccer match, and so much more.

CMS is the official partner middle school for Union Rescue Mission (URM): while families with children in middle school reside at URM, their children attend CMS. As a result, the number of students at CMS experiencing homelessness is disproportionately high. Our wraparound services create stability and belonging for students and their families. Together, PLN schools embody the California Community Schools vision: where academic excellence, wellness, and leadership empower every child to succeed in school and life.






## YOUTH WORKFORCE SERVICES

PLN's Youth Workforce Services (YWS) program prepares more than a thousand youth across Los Angeles annually for success in education and the workforce, focusing on drop-out recovery and prevention, college access, college retention, and vocational training. YWS youth (ages 14-30) receive services at a critical time in their personal and career development—a time when they are defining their core identities, values, beliefs, and roles in society. PLN's programming and unique holistic approach ensures that YWS participants receive comprehensive services to address challenges such as mental health, housing insecurity, and food instability alongside academic and workforce preparation, training, and support.

### 3<sup>RD</sup> ANNUAL COLLEGE SEND-OFF

Our 3<sup>rd</sup> Annual College Send-Off event celebrated 78 of our amazing Youth Workforce Services graduates as they announced their college and continuing education plans for Fall 2025. These young leaders have shown remarkable dedication on their journeys, and it was a joy to honor their hard work by presenting them with a sweatshirt representing the college or university they will be attending, along with a \$250 gift card to help them purchase essential items for their first year.

During the event, we were inspired by guest speakers Lisa Salazar, Executive Director & General Manager of the City of Los Angeles Youth Development Department; Elizabeth Zamudio, Vice President of Education at UnidosUS; and Diana Robles, one of our YWS alumni and a rising junior at UC San Diego. A huge thank you to our sponsors: Eve & Co, UnidosUS, LA City Youth, LA Economic & Workforce Development Department, and Inner City Arts for making this event possible!





 [LEARN MORE ON THE PLN BLOG](#)

## DANNY'S STORY

Just two years ago, Danny and his sister were living in their car, facing the daily challenges of trying to succeed in school and work while navigating homelessness. Thanks to Danny's career advisor and our partnership with private philanthropy, our YWS career advisors were able to help Danny and his sister secure stable housing by providing rental assistance and covering their move-in costs.

Nearly a year ago, Danny joined PLN Angeleno Corps, a program that provides participants with valuable work experience, a \$10,000 stipend, and intensive case management. Since joining, he has dedicated 40 hours each month to supporting students at Para Los Niños Charter Middle School. His commitment doesn't stop there—Danny also works as a security guard to help provide for his sister and himself.

Through his time in the Angeleno Corps program, Danny has discovered a passion for youth development. Inspired by his experience, he now plans to return to school to pursue a career in child development. He's taken full advantage of the enrichment opportunities we offer, participating in activities like our Sony Studios tour and artificial intelligence workshops—and he's eager to continue learning and growing through upcoming events. Danny's story exemplifies the impact of opportunity, support, and perseverance. We're proud to walk alongside him on his journey.

**\$1,508,561**

in wages paid to youth interns

**(99%)**

of our first-year college students  
successfully completed their freshman year

## MELISSA'S STORY

The goal of Para Los Niños' DVSS program is to reduce barriers to employment by providing support to CalWORKs participants who are experiencing or have experienced domestic violence. Melissa, a single mother of three children, came to PLN for help removing barriers to employment. What she received was long-term peace of mind through case management, healing support groups, legal advocacy, and more. Melissa had always been determined to reach her goals both personally and professionally, and with the right team in place, she did just that. She maintains regular communication with PLN's DVSS staff; this June, she was particularly excited to share that her oldest son was graduating from high school and heading off to UCLA in the fall. She attributes the success of her son as well as her ability to be present at these life-defining moments to the support she received from her team at PLN.

*“Para Los Niños will always be a part of my heart. Without Para Los Niños helping me recover and heal, I wouldn't be able to be part of these special moments with my boys.”*

—Melissa




82%

of caregivers who participated in family services programs increased protective factors





## FAMILY SERVICES



Comprehensive support offered by PLN Family Services is designed to strengthen families and prevent abuse. Family Services provides in-home counseling, case management, case navigation, therapy, support groups, and workshops in addition to sponsoring community-wide events that promote family socialization and connections. Programs in this area include Prevention & After-Care, Partnerships for Families, Family Preservation, Family Violence Prevention, United Mental Health Promoters, and Domestic Violence Support Services (DVSS). This network of programs supports caregivers in increasing protective factors—skills, attitudes, and behaviors that reinforce family bonding and promote safety inside and outside of the home.

PLN's Family Services team does a tremendous amount of work, from responding to emergency support requests such as delivering groceries and other essentials to families to navigating deep emotional wounds with children and caregivers who have experienced trauma. Everything they do promotes healing in the context of family and community.





## MENTAL HEALTH

Para Los Niños is the only children’s mental health provider in the Skid Row neighborhood, but our impact stretches far beyond the bounds of this neighborhood. We serve children and adults with full scope Medi-Cal as well as those without insurance across L.A. County Service Planning Area 4, which includes metro Los Angeles communities from West Hollywood to Boyle Heights. Our Mental Health program also supports students, their caregivers, and teachers at PLN’s early education centers, charter schools, and other programs in PLN Student and Community Services. Our mental health staff are an essential part of PLN’s work. For us, mental health support is not just about providing point-in-time services but rather being a part of a network of support that honors the complexity and dignity of all people. To do that authentically, therapists create real relationships based in trust, respect, and a profound commitment to community.



114

hours of training on a range of topics—  
from sensory strategies to gender diversity  
to imposter syndrome—provided in FY25

77%

of current mental health staff  
were students trained at PLN



## SILVIA'S STORY

Silvia's journey with PLN began after her daughter relapsed into drug use, prompting social services to intervene. Silvia has been caring for her grandchildren—17, 16, 12, and 11 years old—on her own for the past four years. Before becoming caregiver to her grandkids, it had been many years since she cared for young children; and managing her new life proved overwhelmingly difficult. Her stress became so intense that she contemplated suicide, and she frequently visited the emergency room due to anxiety attacks.

Recognizing the need to foster a stable environment for her grandchildren, Silvia reached out to Para Los Niños for support. Her therapy sessions have focused on learning to manage her stress through breathing techniques and simple exercises that have effectively reduced her anxiety. Having someone to talk to has been invaluable, especially since she had no family or friends available to support her in her grandchildren's care.



Three of her grandchildren have also received therapy at Para Los Niños. Silvia's 16-year-old granddaughter, Princess, experienced depression, refusing to eat or go to school during her mother's struggles with addiction. However, attending therapy has made a considerable impact on her wellbeing. Princess is now thriving in school and will be attending UC Santa Cruz on a full scholarship in the fall of 2025.

Silvia says she is incredibly thankful to PLN, because the ability to heal together has not only strengthened their bonds but also has created a nurturing environment in her home based on trust and respect. Her story illustrates how even our darkest moments can be overcome, and the right support can lead to a brightness surpassing all our expectations.

## LUZ'S STORY

Curiosity brought Luz to her first Best Start Metro LA Community Partnership Meeting. The meeting flyer focused on helping young children prepare for school, a topic that resonated deeply for Luz as a mother. She eventually joined other moms in knocking on doors in her community to learn what they already knew from first-hand experience: childcare was neither accessible nor affordable for families like theirs. The data they collected was used to design a strategy to address childcare needs for low-income families.

From there, Luz began to step into new roles and leadership opportunities: community committees, computer literacy groups, public speaking, and communications trainings. Over time, she strengthened her facilitation, leadership, and organizing skills and became trained and certified as a Promotora and ultimately joined Para Los Niños' Community Transformation Collective (CTC) team.

Today, as she reflects on her journey, she is filled with pride—not just in herself, but in the power of community that she has experienced. She stays motivated by carrying the stories she has heard from her neighbors in her heart and continues to be the person who not only listens to those stories but also uplifts the voices of her neighbors and helps to transform their community.

*“Don't let fear stop you. You don't have to know everything. Just start. Along the way you will learn. Give yourself the opportunity, because it might just change your life.”* —Luz



608

residents participated across

32

capacity building sessions, including sessions on community land trusts, power mapping, root causes of homelessness, tenants' rights, and more



## COMMUNITY TRANSFORMATION

The Community Transformation Collective (CTC) at Para Los Niños drives the Best Start Region 1 (BSR1) Community Partnerships investment —a place-based, community-building movement made up of more than 1,000 community residents and cross-sector organizational partners who work together to affect change in their region. CTC supports community members to change systemic conditions by bringing together community residents, local organizations, city and county departments, elected officials and businesses, to partner and commit to create equitable conditions to make communities healthier, happier and with a future full of hope for all children.

Promotoras (or Promoters) are at the heart of this work. They are residents who hold trust within their community due to familiarity, shared language, and cultural norms. Promotoras are specially trained to partner with and strengthen the capacities of neighbors and agency representatives to build and share community power around systems change, housing, health, education, food insecurity, transportation, and leadership development.

With an initial investment from First 5 LA, this region includes the communities of East Los Angeles, Metro Los Angeles, South El Monte/El Monte, and Southeast Los Angeles. Since 2021, the BSR1 Community Partnerships prioritized housing justice/equity as their primary issue and has been partnering with LA Forward and Strategic Actions for Just Economy to lead their Housing Collective Advocacy efforts on the ground, at a local, county, and statewide level.



FY 2024-2025

## HAPPY HIGHLIGHTS

AUGUST 2024

### *Funding for Unhoused Families*

In response to an L.A. Times report about the rising number of children living on Skid Row, L.A. County Supervisor Hilda Solis made a generous contribution to supporting our unhoused families. With this essential funding, Para Los Niños has been able to continue collaborating with Skid Row agencies to maintain programs that engage and empower families.

OCTOBER 2024

### *Domestic Violence Council recognized Family Services*

L.A. County Public Health Department's Domestic Violence Council recognized PLN's Family Services team during their 2<sup>nd</sup> Annual Domestic Violence Awareness Month Breakfast. The award recognized PLN's domestic violence support services, which provide comprehensive support to survivors such as housing and legal resources, referrals to the East LA Women's Center, financial assistance, and individual and group therapy.

NOVEMBER 2024

### *Para Los Niños Charter Elementary School Renewal*

We are thrilled that LAUSD Board Members approved the charter renewal of the Para Los Niños Charter Elementary School. This is an incredible achievement for our school community, and we are excited to continue providing high-quality education for our amazing scholars and meaningful support to their families.



APRIL 2025

### *Lalo Alcaraz Visit*

In partnership with Heluna Health, prolific cartoonist and author Lalo Alcaraz visited Para Los Niños Charter Elementary School to read his new book, Poquita's Garden. Our 2<sup>nd</sup> graders enjoyed a fun and heartfelt story time about Poquita, a small tree that grows into a powerful symbol of hope and transformation for her community. Together, they learned to make healthy choices.



**MAY 2025**  
**Father's Retreat**

Our Family Services Fathers Retreat was a powerful reminder that self-care is not a luxury for fathers, but a responsibility. Organized by program participants Juan Castillo, Santos Mendez, Ramon Mejia, and Juan Jucup—with support from PLN staff members Rafael Guirado and Eva Lizardo—every detail was chosen by dads, for dads. From massages to haircuts to workshops grounded in the Community Resiliency Model—each activity was selected based on what fathers voiced they needed.

**MAY 2025**  
**Mindfulness Fair**

PLN charter schools' social justice team, in collaboration with the social work team, were proud to host our Third Annual Mindfulness Fair! This hands-on event is designed to support students' mental well-being through calming, sensory-based activities that promote self-awareness, emotional regulation, and stress relief. It's a fun and age-appropriate way for students to explore mindfulness practices that build resilience and support overall mental health.



**JUNE 2025**  
**Children's Hospital of  
Los Angeles Pediatricians**

Pediatric residents from Children's Hospital Los Angeles visited Para Los Niños to meet with our mental health team and deepen their understanding of community-based care. From trauma-informed therapy and school-based support to telehealth and resource navigation, we were proud to share our model with the next generation of pediatricians and grateful for the thoughtful dialogue around systems navigation and how we can all play a role in early intervention and healing.

45 YEARS OF IMPACT  
IT ALL STARTED  
WITH A STORY...



**1980s**

After reading an L.A. Times article about the plight of children living on Skid Row, our founder, Tanya Tull, and people passionate about helping children were inspired to create the first children's social service agency in the Skid Row neighborhood. They started small with a leased warehouse and just 50 kids enrolled, but they were onto something special.



**1990s**

In the 1990s, Para Los Niños continued to grow, expanding programs from early education to grade school and afterschool programming. In 1994, PLN received the largest Family Preservation grant in L.A. County's history.



### 2000s

In the early 2000s, Para Los Niños not only opened the Charter Elementary School and Middle School, but also youth work force centers supporting youth up to 24 with college and career readiness. In 2004, PLN started providing mental health support to families and remains the only children's mental health provider in the Skid Row neighborhood.



### 2010s

In 2010, Para Los Niños joined a pilot to focus on supporting a community's ability to foster and sustain healthy and thriving environments for families. In the past decade and a half, Para Los Niños has expanded to include even more programs that promote the overall wellbeing of children, youth, and their families. These programs include help for new parents, people who have experienced trauma, and people who need support navigating complex social services.



### 2025

Today, PLN covers the full spectrum of life's milestones from pre-natal support to preschool, from grade school to college, from mental health care to parent resources and community empowerment for all.

Our story continues until every child, youth, family and community member has what they need to reach their fullest potential.



420

attendees

72

sponsors and community partners

\$750,000

raised on behalf of  
L.A.'s children & families



## 45 YEARS OF IMPACT HOW WE CELEBRATE

On May 8, 2025, more than 400 Angelenos came together at the Beverly Hilton to celebrate PLN's 45 years of community impact. The evening included the beloved tradition of Para Los Niños Charter Elementary School 4<sup>th</sup> graders reading their own poems, proudly proclaiming their identities. Our PLN Charter Middle Schoolers delivered a hilarious history lesson on our organization's growth. Staff members from our Youth Workforce Services, United Mental Health Promoters, and Domestic Violence Support Service programs provided just one example of how our expanded services have enabled them to wrap around a family for educational, economic, and emotional support.

One of the most impactful moments of the night brought together a PLN Charter Elementary School alumnus, Luna, and our PLN Familia Award Honoree, U.S. Representative Lucille Roybal-Allard. Their parallel stories truly demonstrated the power of courageous leadership and how it inspires future generations to sustain the movement toward progress, regardless of where they come from or how they start.

Together, we also acknowledged the very real impact our organization and community face as a result of discriminatory rhetoric that leads to unjust policies. As so much in this moment seems uncertain, you can count on PLN staying true to its mission in the years to come as we have for the past 45 years.

 [WATCH LUNA'S STORY](#)



## LUNA'S STORY

Luna's parents had always told her to prioritize her education, because they both had to drop out of school to support their families. "I know that my parents gave up so much to pursue their life in a country that they don't know," she says. Luna came to Para Los Niños Charter Elementary School in first grade, and even then, she knew that the warmth and acceptance she felt here could help her achieve anything. In fifth grade, she ran for student council, because she wanted to make a difference at the school she loved so much. She didn't win, but she says the experience helped her find her voice and use it.

 [JOIN US THURSDAY, MAY 21, 2026  
FOR PLN'S 2026 ANNUAL BENEFIT](#)

Teachers saw her potential, too, and recommended her to be one of the students selected to apply to Brentwood School, a selective college-preparatory school that offers a challenging curriculum. PLN staff helped her family through the application process, practiced interviews, and even supported her with transportation and materials when she inevitably got in. Now, Luna is vice president of Brentwood's Latino Student Alliance; and this summer, she traveled to Washington D.C. for a program with the Congressional Hispanic Caucus Institute. She hopes to go to law school, become a lawyer, and eventually run for Congress.

*"Every decision that Congress makes will inevitably affect my life, and it's important to me that the people who are making those decisions look like me... Para Los Niños is more than just its programs and services. It's an organization that helps young people believe in themselves and reminds us that we belong, that our voices matter." —Luna*

The background features a stylized cityscape with yellow buildings and palm trees. There are also orange birds flying in the sky. A dark purple cloud is in the top left, and a blue cloud is in the top right.

## OUR VOICE

At Para Los Niños, decades of work providing direct services to families, building partnerships across sectors, and navigating complex social systems has put us in the unique position to advocate from a place of experience. Shifting the narrative of disenfranchisement for our community is about more than point-in-time services; it's about addressing the conditions that create barriers to all families having the opportunity to thrive.

As part of our strategic plan, we committed to using our collective voice to impact systemic and broad changes on policies and programs locally, regionally, and nationally. We planned to achieve this by creating a clear policy agenda and building relationships with policy makers, partners, and coalitions to advocate for and elevate issues that impact children, youth, and families to government agencies, elected officials, and other decision makers.

In FY2024-2025, we're proud to share that PLN's Government & Community Relations team sent **42 letters** and attended **19 meetings with elected officials** at the city, county, state, and federal levels in support of policy shifts that improve the lives of children, youth, and their families.

## DEVELOPING A POLICY AGENDA “FOR THE CHILDREN”

Earlier this year, we launched a community-centered approach to gathering insights from our community about what matters most. Centered on the voices of families, Para Los Niños is developing a policy agenda that we hope will provide clarity on which policies we will focus on to allow us to provide policymakers with a whole-child and whole-family perspective that is central to shaping effective policies.

**596 parents and caregivers and 108 staff members** participated in a survey where they identified their top challenges in reaching their full potential and helping their communities succeed. Dozens more community members were engaged through listening sessions during the first half of FY2025-2026. Some early cross-cutting themes emerged: **Rising costs of living are straining families’ ability to thrive; affordable housing is out of reach, unsafe, or comes with strict barriers; and immigration enforcement creates fear and instability for families.**

Through this agenda, we plan to be more active in policy and advocacy efforts connected to the themes that emerge from our collective work with the goal of focusing on policies and efforts that reflect the voices of those most impacted.



## DIGITAL EQUITY

In partnership with the Digital Equity Los Angeles (DELA) Coalition and the California Community Foundation, PLN Director of Government & Community Relations, Dr. Carla Lopez-Valdes, traveled to Sacramento for the 2<sup>nd</sup> Annual Digital Equity Advocacy Day. Alongside **90 DELA advocates**, we uplifted the importance of ensuring that all students have quality internet to access online learning tools, resources, and services.

This summer also wrapped up our 2024-2025 cohort of PLN’s Youth Advocacy Council, where **16 incredible young leaders** explored the crucial topic of digital equity and its impact on their lives. Youth shared powerful stories about how internet access impacts their education and mental health. During hands-on workshops, they practiced combining data with lived experience to develop effective public commentary; they used root cause analysis to uncover deeper causes of digital inequity; and they reviewed voting records, policy decisions, and public statements to create accountability score cards for elected officials.



## SUPPORTING UNHOUSED FAMILIES

At Para Los Niños, our model is grounded in the belief that a child’s development cannot be separated from the wellbeing of their family.

Recent statistics show the number of unsheltered families with children in Los Angeles County has increased by 18% this year, from 903 to 1,067. PLN’s communities are disproportionately impacted: Our Charter Middle School has seen a nearly **300% increase in unhoused students** in the past three years. Nearly **40% of children in our early education program qualify as unhoused** under the McKinney-Vento Homeless Assistance Act. Our Community Transformation team conducted a housing needs assessment through Community Partnerships in Best Start Region 1 and found that **74% of residents experience rent burden** (over 30% of income is spent on rent and utilities) as opposed to 54.37% for LA County.

Parents carry the weight of trying to provide safety, sustenance, and stability while children experience shame and social isolation. In school, students often struggle with attendance or mental health concerns that impact their ability to stay on track for graduation. Across our organization, teachers, therapists, mentors and case managers are working diligently to support families experiencing urgent need, navigating complicated systems alongside them, and connecting them to life-saving support.

This means forming partnerships with local shelters to keep families together, providing mental health services on-site, and promoting conditions more conducive to healthy child development. It means connecting with leaders in philanthropy, government, and the media to raise awareness and advocate for solutions that are inclusive of families and children. And it means creating spaces like “Club Hope” at PLN Charter Middle School, where students experiencing homelessness can build community, decompress, and share their experiences.

In FY2024-2025, through the generous support of public and private funds, PLN has distributed more than \$220,000 to families struggling with housing stability—helping get families housed and preventing them from becoming unhoused. As a result of PLN’s Community Transformation team’s *Housing Collective Advocacy* efforts, residents are now connected to statewide policy work through the *Housing Now! California Coalition*. Locally, they are connected to *Housing Justice as Health Equity Collaborative* and are advocating for more affordable housing at Los Angeles City Council, El Monte City Council, and the Los Angeles County Affordable Housing Solutions Agency meetings.

Para Los Niños has not only been able to support impacted communities directly but is also supporting community-led efforts to transform housing inequity locally and throughout the state. There’s still so much more work to do, and PLN remains committed to ensuring the wellbeing of children and their families is prioritized in increasingly difficult times.

## OUR IMMIGRANT COMMUNITIES

By the end of FY2024-2025, Para Los Niños families and staff had endured months of fear, anxiety and stress due to economic uncertainty, housing insecurity and, for some, the gripping fear of separation from loved ones. From operationalizing our sanctuary policy across all 16 PLN sites to staff connecting one-on-one with caregivers to provide linkages to legal resources, emergency funds, transportation, and so much more, we are proud of the many ways staff have mobilized to keep our children, youth, and families safe.

As a result of our work and collaboration with key partners, more than 500 community members across the county received “know your rights” training, information on caregiver affidavits and public charge, as well as family self-care practices. None of this would have been possible without the leadership of our Community Transformation Collective's Promotora team and the partnership of organizations like Bet Tzedek Legal Services, The Coalition for Humane Immigrant Rights, City of Los Angeles Council District 1, Laura Valles and Associates, LA Forward, Momentum Solutions, Neighborhood Legal Services of LA County, Strategic Actions for a Just Economy and other partners.

The trusting relationships established with our families and communities are central to our ability to be with them through some of the most challenging moments of their lives. Only together can we build a better world that works for everyone.



# OUR LEADERS

## BOARD OF DIRECTORS

Marjorie Ehrich Lewis, Chair  
*Retired Partner*  
*Gibson, Dunn & Crutcher LLP*

Sandra Aispuro, Vice Chair  
*VP, Retail Operations Manager*  
*City First Bank*

Ronnie Roy, Secretary  
*Partner*  
*DME Law LLP*

Tracy Arceci  
*Market Executive*  
*Global Commercial Banking Bank of America*

Ernesto Arias  
*Director of Sales Planning and Operations, TV*  
*Sony Pictures Entertainment*

Camilo Becdach  
*Self-Employed*

Lorraine Prieto Berchtold  
*Advisory Council Member*  
*Common Sense Media, Los Angeles*

Bill Burton  
*Founder & President*  
*Bryson Gillette*

Susan Edelman  
*Retired*  
*Gibson, Dunn & Crutcher LLP*

Dan Estes  
*Program Director*  
*Specialty Family Foundation*

Andrew Herreria  
*Senior Vice President, Global Human Resources*  
*Netflix Feature Animation*

Cathy Hession  
*President & Executive Director*  
*The Carol and James Collins Foundation*

Josh Ludmir  
*Shareholder*  
*Greenburg Traurig, LLP*

Parker Morse  
*Founder & Board Member*  
*My Code Media*

Murray McQueen  
*Managing Director*  
*Northmarq Fund Management*

Andrei Muresianu  
*Vice President*  
*Capital World Investors*

Mark Pan  
*President & General Manager*  
*Cotton On USA, Inc*

Walter F. Parkes  
*Producer*  
*Parkes + MacDonald Productions*

Gabriel Robles  
*Senior Vice President / Group Director*  
*Flagstar Bank*

Jose A. Tejada  
*VP of Mortgage Lending*  
*Guaranteed Rate*

Beth Tigay\*  
*Executive Director*  
*Fineshriber Family Foundation*

John Wasley  
*Managing Partner*  
*Wasley Associates*

Cindy Winebaum  
*Volunteer*

Malin Wong  
*Manager of Portfolio Operations*  
*Western Asset Management*

Rick J. Caruso (Emeritus)  
*Founder & Executive Chairman*  
*Caruso*

*\*Joined June 2025*

## SENIOR LEADERS

Drew Furedi, Ed.D.  
*President & Chief Executive Officer*

Sarah Figueroa-Freeman, Ed.D.  
*Executive Vice President and  
Chief Operating Officer*

Yug Fon Chiquito  
*Chief Financial Officer*

Esperanza Bacilio\*\*  
*Chief of Staff*

Deanette Brewer\*  
*Vice President of Human Resources*

Casey Eiseman\*\*  
*Vice President of People & Talent*

Sam Joo\*  
*Vice President of Student and  
Community Services*

Katherine Nelson  
*Vice President of Student Success*

Dan Nieman  
*Vice President of External Affairs*

Jimmy Urizar\*\*  
*Vice President of Student and  
Community Services*

Brenda Aguilera  
*Director of Community Transformation*

Stanley Anjan  
*Managing Director, Charter Schools*

Claudio Arias  
*Managing Director, Finance - Controller*

Sherry Berg, Ph.D.  
*Director of Clinical Development*

Karen Garcia\*\*  
*Director of Family Services*

Cecilia Hernandez  
*Managing Director, Expanded Learning*

Christina Mariscal Pasten  
*Managing Director, External Affairs*

Blanca Medrano  
*Managing Director, Operations*

Michelle Molnar\*\*  
*Managing Director of Contracts  
and Financial Planning*

Marisol Naranjo  
*Managing Director,  
Inclusive Culture & People Experience*

Jorge Orozco  
*Director of Youth Workforce Services*

Lorena Rodriguez  
*Managing Director, Early Education*

Judi Stadler  
*Director of Clinical Services*

\*Transitioned in FY2025

\*\*Promoted in FY2025




## OUR STAFF

As part of our strategic plan, we are committed to making investments to become a desired employer in education, youth development, and comprehensive family support services.

In order to accomplish this, we seek to provide a comprehensive employee engagement and experience program that centers inclusion and allows staff to bring their authentic selves to work; differentiated professional and leadership development, with opportunities to deepen their craft and grow in their positions; and, a long-term plan for PLN to remain equitably competitive with salaries and benefits.

As a result, in FY 2024-2025, we are so proud to have accomplished the following:

- 
- **Comprehensive Employee Engagement:** Hosted our first annual staff recognition dinner honoring the dozens of PLN staff members who've reached milestone anniversaries—from 5 to 27 years—in our work together; celebrated diverse cultures and promoted awareness of social causes through a series of monthly activities, resources, and communications; and, for the second year in a row, surveyed employees to collect feedback and track progress on staff experience.
  - **Professional Development:** Hosted three leadership summits each attended by all 90 leaders representing all PLN departments, with professional development including management strategies, promoting inclusive practices, and being responsive to staff feedback. As a result of cultivating talent within our organization, promoted several internal staff members to senior leadership positions.
  - **Prioritizing our Staff:** Adjusted fundraising goals in order to provide compensation increases when many organizations are foregoing pay adjustments; and prioritized higher increases for frontline staff who are doing so much to support families during a challenging time.



 [LEARN MORE ON THE PLN BLOG](#)



## AZUCENA'S STORY

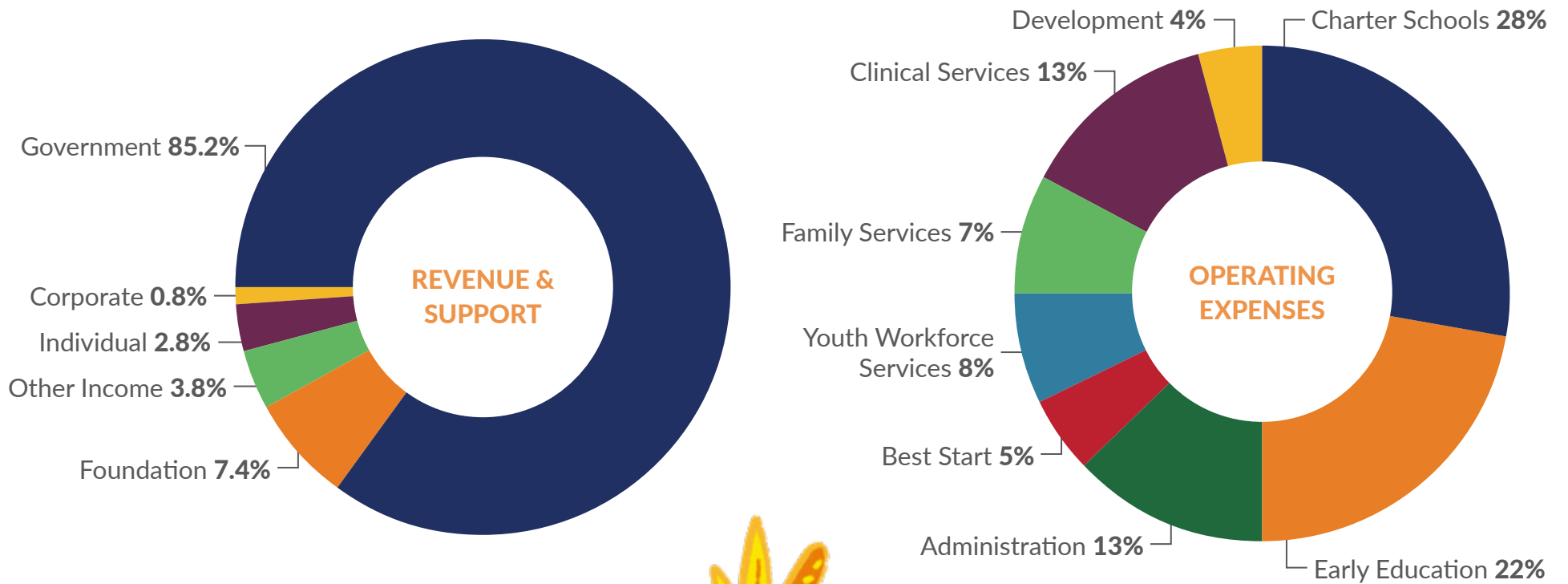
Meet Azucena Garcia, a therapist at Para Los Niños. Growing up as a Mexican-American woman, she knew there was a significant need for mental health services in her community. “My understanding of our culture became a motivational vehicle to support people as they navigate their experiences and challenges,” she says. “At PLN, I know that my colleagues and I are rooted in care for our clients and the communities we are a part of. Our work isn’t always easy, but we often approach our work with love and understanding because many of us understand first-hand the positive implications our work has on both individuals and entire communities.”

In fact, many of our staff members are representative of the communities we partner with—85% of PLN staff identify as people of color. PLN provides unique training opportunities, including professional development that encourages staff to use intersectional frameworks in their practice. Azucena’s story shows how culturally relevant care makes an impact beyond the walls of a therapy room, touching the lives of everyone who interacts with individuals receiving that care.



# OUR FINANCIALS

FISCALLY RESPONSIBLE



## INCOME

Government Revenue	47,788,825.00
Contributions	6,740,938.00
Program Fees	356.00
Other Income	2,114,382.00
<b>Total Income</b>	<b>56,644,500.00</b>

## EXPENSES

Salaries	30,630,945.00
Payroll taxes and benefits	7,267,243.00
Occupancy	4,155,932.00
Interest expense	119,004.00
Subcontractors	770,490.00
Office Supplies	263,479.00
Program Supplies	1,822,060.00
Furniture & Equipment/Vehicles	344,516.00
Consultants/Professional Services	2,395,540.00
Participant Wages	2,098,655.00
Insurance	295,206.00
Food/Kitchen Supplies	1,336,685.00
Family Support Funds	1,379,127.00
Professional Development	907,412.00
Information Technology	554,193.00
LAUSD Oversight/Fair Share	0.00
Payroll Processing	195,083.00
Depreciation	263,976.00
Miscellaneous Expense	2,189,700.00
<b>Total Expenses</b>	<b>56,989,248.00</b>
<b>Net Income (Loss)</b>	<b>151,447.00</b>



# OUR SUPPORTERS

JULY 1, 2024—JUNE 30, 2025

We are grateful for the generous support of each foundation, corporation, and individual that makes our work possible.

## \$500,000+

Anonymous  
The Ballmer Group Philanthropy  
Diane and Dorothy Brooks Foundation

## \$250,000—\$499,999

Caruso Family Foundation  
Supervisor Hilda L. Solis, Los Angeles County, First District  
The UCLA-UCSF ACEs Awareness Resilient Network (UCAAN)

## \$100,000—\$249,999

Anonymous  
California Community Foundation  
Doris Duke Foundation  
Leonard Hill Charitable Trust  
The Dr. Ruth Milman and Dr. Frederick Schiff Foundation  
The Ralph M. Parsons Foundation

## \$50,000—\$99,999

Annenberg Foundation  
Anonymous  
Andrea and Blake Brown  
The Atlas Family Foundation  
Capital Group Charitable Foundation\*  
Cedars-Sinai  
DiCecco Family Foundation  
Dwight Stuart Youth Fund  
The Green Foundation  
Madeleine Heil and Sean Petersen  
Jewish Community Foundation of Los Angeles  
Steinmetz Foundation

Tikun Olam Foundation  
WHH Foundation  
Winebaum Family Foundation\*

## \$25,000—\$49,999

Anonymous  
The Bank of America Charitable Foundation\*  
William C Bannerman Foundation  
Baptist Service Corporation  
Gail and George Baril  
Baron's Second Chance Foundation  
The Louis L. Borick Foundation  
The Carol and James Collins Foundation\*  
Ann Daly  
Joseph Drown Foundation  
Sam Harris  
Cathy and Ed Hession\*  
The Kaplan Family Fund  
Kenneth T. and Eileen L. Norris Foundation  
Panzer Charitable Fund  
Walter Parkes and Laurie MacDonald Charitable Foundation\*  
Payden & Rygel  
Pfaffinger Foundation  
Specialty Family Foundation  
Walter J. and Holly O. Thomson Foundation  
UnidosUs  
United Way of Greater Los Angeles  
University of California, Los Angeles  
The Walt Disney Company

## \$15,000—\$24,999

Lorraine and Joe Berchtold\*  
David Bissett  
Kelly and Bill Burton\*  
Johnny Carson Foundation  
Casey Family Programs  
Citizens Business Bank  
Richard Eaton Foundation  
Fineshriber Family Foundation\*  
Aviva Fontes\*  
Supervisor Lindsey Horvath, Los Angeles County, 3rd District  
Judith and Donald Katz\*  
Monica Kohler and Pedro Pizarro  
Koreatown Youth and Community Center  
Benjamin Kramer  
Opportunity Labs  
The Mindel Family Foundation  
Jay & Deanie Stein Foundation Trust  
Bo Thordarson

## \$10,000—\$14,999

The 2006 Claudine Ajeti Revocable Trust\*  
Anonymous  
Alex Amirkhanian  
Angelenos for Hochman for DA 2024  
Holly and Albert Baril  
Susan and Scott Edelman\*  
FX Network  
Lindsey Garcia and Parker Morse\*  
William H. Hannon Foundation  
Human Impact Partners  
KROQ-FM  
Marjorie and Steven Lewis\*  
The Melvoyn Family  
Linda and Kenneth Millman  
The Minc Family Fund  
Andrei Muresianu\*  
Madhuri Parikh and Lonn Friese  
Beverly and Fredric Reichel  
Sullivan Curtis Monroe Insurance Services, LLC

Neil Smith, Elizabeth Smith & The Ralph L. Smith Legacy Fund  
Webcor Construction LP  
Zegar Family Fund

## \$5,000—\$9,999

Amazon  
Anonymous  
Arch Insurance Group Inc.  
Arent Fox LLP  
The Sheri and Les Biller Family Foundation  
Alexander J. Caruso  
City First Bank\*  
Cotton On Group\*  
Cox Castle & Nicholson LLP  
The Dutton Testamentary Trust\*  
Frank Easterbrook  
Lucille Ellis Simon Foundation  
Anna May and Tim Feige  
First 5 LA  
Rachel Fiset and Ronnie Roy\*  
Flagstar Bank  
Robert and Alene Gelbard  
GHJ Advisors  
GoodRx  
Great Public Schools Now  
Greenberg Traurig, LLP\*  
Grifols  
The Guevara Family Fund  
Kaiser Permanente  
W. M. Keck Foundation  
KLM Foundation  
Lisa and Victor Kohn  
Gail Lees and David Joslyn  
Los Angeles Chargers  
Los Angeles Cold Storage Company  
Los Angeles County Department of Arts and Culture  
Adria and Pedro Martí  
Mary Ann and Murray McQueen\*  
Janet and Patrick Moore  
Gregory and Maureen Morrison  
National Charity League Los Angeles

Nickelodeon Studios  
Olivarez Madruga Law Organization, LLP  
Eleanor R. Padnick  
Jill and Mark Pan\*  
Prologis  
Rhino Entertainment  
Rene and Matt Rodman  
Ruth & Sonny Singer Foundation  
Jane and Harry Scheiber  
Susan Shieldkret and David Dull  
The Toppino Family  
Fran and John Wasley\*\*  
Cindy and Jake Winebaum\*  
Kymberli Winter  
Malin Wong and James Kissane\*  
David ZeBrack  
**\$2,500—\$4,999**  
Alperstein, Simon, Farkas, Gillin  
& Scott, LLP  
Athens Services  
Minden Beach  
Anne Beaty  
Austin and Virginia Beutner  
Clase Azul  
The Coalition for Humane Immigrant  
Rights  
Cornerstone  
Paul Derby  
Eve & Co  
Felix Chevrolet  
Gail and Michael Feuer  
Laura Fox and Ben Vandebunt  
Friars Charitable Foundation  
Michael L. Galindo  
The Giving List Los Angeles  
Glaser Weil, LLP  
Nina L. Hachigian and Thomas Joseph  
Deegan-Day  
Lindsay and Nick Hutchinson  
Jacobs  
Cindy and Michael Kane  
Karp Family Foundation

LA Partnership for Early Childhood  
Investment  
Kelly and Matthew Levy  
Christina Lopez  
Loyola Marymount University School  
of Education  
Irlanda Mendez  
Microsoft Corporation  
NBC Universal/Telemundo  
Sara Neff  
Reza Pishva  
The Port of Los Angeles  
Luis Ramirez  
Gabriel Robles\*  
The Starbucks Foundation  
Divya and Satish Subramanian  
Tina Takeuchi  
Team Friday  
Carrie and Peter Tilton  
Marie Torres  
Weingart Foundation  
Sarah Wick and Robert Padnick  
**\$1,000—\$2,499**  
Albatross Charitable Foundation  
Laura Fry and Scott Altman  
American Business Bank  
Ernesto Arias\*  
Cecilia Ball  
Alexandra Baril  
Graydon Baril  
Ria and Jim Berkus  
Don Bizub  
Lauren Blas  
Naya Bloom and Drew Furedi  
Blue Shield of California  
John Boyle  
Krysten A. Brennan  
Alessandra Brophy  
Calima Electric Inc  
Martha and Tim Catlin  
Jennifer Chuc  
Jack Richard Cline, Jr

Christine and Tony Digiovanni  
Kurt Eggert  
Rachel and Marc Ehrich  
Martha R Estavillo  
Hilary and Daniel Estes\*  
Deb Estes  
Franco Eyrastian  
Sarah Figueroa-Freeman and  
Michael Freeman  
Andrew Fogg  
Marianne and Ronald Furedi  
Gloria Gerace and Thomas Mone  
Kathryn Girard and Susan Vogelfang  
Claire and Brian Goldsmith  
Gripple Incorporated  
Hale Thornhill Foundation  
Fiona Harrison and Richard Sander  
Cassandra Horton  
Norma Ibarra  
Rosalia and Michael Ibarrola  
Insurance Industry Charitable Foundation  
Isabel Foundation  
Oscar M. Jaime  
Leslie Kautz  
Pejman Kharrazi  
Ernest Khirallah  
David Kietzman  
Kinecta Federal Credit Union  
The Kleiner Cohen Foundation  
Katie and Christopher Knight  
Larson LLP  
Kari Lauritzen  
Scott Lord  
Los Angeles Breakfast Club  
The Los Angeles Flower Market  
Los Angeles Water & Power Employees'  
Association  
Los Encinos School  
Tiffany Lovett  
Loyola High School of Los Angeles  
Mad Leo Productions LLC  
Christina Mariscal Pasten and

Edgar Pasten  
John Melbon  
Katie Mercer and Jorge Fernandez  
Mindling-Schulman Family Foundation  
Jen Mitchell  
The Morrison & Foerster Foundation  
Alan Myerson  
Mona and Tony Nicholas  
Anna M. Nicola  
Jill and Andrew Nieman  
Victoria Nourafchan and David Rosenstein  
Offit Kurman Charitable Foundation  
Michelle O'Grady  
Rick Olivarez  
The Pad Project  
Paramount Pictures  
Simone and Patrick Purcell  
Al and Amalia Ransom  
Rebecca and Matthew Rich  
Christopher Rossi  
Elyse Salend and Jon Pynoos  
David Schwartzman  
Kevin Scott  
Shuster Financial Group, LLC  
Kim Snyder  
Susan Sterling and Edward Myers  
Donald Strasser  
Lisa and Mike Tan  
Riyoko Tanaka  
Mimi and Jose Tejada\*  
Allison Thomas  
Mary Lu Tuthill  
United Talent Agency  
Laura Valles  
Joanne Valli-Meredith and Glen Meredith  
Joan Velazquez  
Sarai Villagran  
VML Foundation Matching Gifts Fund  
Diana and Robert Walker  
Eileen Walsh  
Caroline Welch and Dan Siegel  
Western Asset Management, LLC

## OUR SUPPORTERS, CONT.

Daniel P. Wingerning

### \$500—\$999

Leticia Acosta  
Marlo D. Acosta and Edgar Villarreal  
Brenda Aguilera  
Sandra Aispuro\*  
Ellen and Steve Angel  
Sarah Angel and Dan Nieman  
Anonymous  
Fidel Argomaniz  
Jennifer Brandon  
Cheryl Charles  
Roy E. Crummer Foundation  
Embeth Davidtz  
The Dekernion Family Foundation  
DIY Girls  
Rowena Docuayan and Sam Joo  
Marianne Dozier  
Kathleen Duncan  
Fenner Precision Polymers  
Jorge Flores  
Darrell A. Forgey  
Foundation for Interscholastic  
Youth Athletics  
Enrique Garcia  
Chris Garlington  
The Gersh Agency  
Thomas Gibilisco  
Judith and Joseph Golden  
Marcos Cruz Gonzalez  
Kathryn Goulding  
Janie Grajeda  
Carol Gstalder  
Jessica and Andrew Herod  
Michael and Susan Horn Family  
Foundation  
Lynn and Craig Jacobson  
Jive Live Entertainment  
Lisa and Alan Kanter

LA Plaza de Cultura y Artes  
Heidi and Damon Lindelof  
Los Angeles County Democratic Party  
Marc Martinez  
Jan and Michael Meisel  
Petra Mejia  
Deena and Edward Nahmias  
Norwalk High School Associated  
Student Body  
Theresa and Timothy Ortez  
Eddi Ortiz  
Leslie Osinoff  
Pilar Padilla  
Pathways LA  
Olivia Pearson  
Joan Pelico  
Karen Peter  
PUENTE Learning Center  
Linda and Lawrence Rauch  
Related Companies  
Lois Rosen  
Royce/Rappaport Family Fund  
SAGE Publications Inc.  
Linda and Miguel Sandoval  
Humberto Sepulveda  
Brandon Shaw  
Norma Silva  
Gretchen Sippial  
Kathryn A. Smith  
St. Paul The Apostle School  
Teach For America Los Angeles  
UPS  
John T. Walsh, III  
John P. Washington, Jr.  
Leslie Waxman  
Barbara B. Widdess  
Mark Wilhelm  
The Williams-Beverly Family Fund  
Hayden Wise

### \$250—\$499

Allan Alexander  
American Honda Motor Co., Inc.  
Corinne Anderson  
Matthew K. Anderson  
Celeste Anlauf  
Anonymous (2)  
Amelia Arambula  
Tracy Arceci\*  
Claudio Arias  
Jaclyn and Thomas Aronson  
Alexander Arroyo  
Ricardo Ayala  
Claudia Ball  
Camilo Becdach and Landon Johnson\*  
Alessia Botti  
Christina and Justin Bragg  
Jacqueline Brooks  
Kathleen Brown  
Elizabeth Cantillon  
Alexander Caro  
Sheldon Carson  
Michael Chernick  
Joanna Cole  
Sharon Crane  
Chava Danielson and Eric Haas  
Christian De Larkin  
Clare and Warren Dern  
Judith Kaneshina Diamond  
Javier Diaz  
Wes Dooley, Jr.  
Michele Dumont  
Durango Properties, Inc.  
Casey Eiseman  
Endo Pharmaceuticals  
Engage R+D  
Tara Farajian  
Kate Farrar  
Kaitlin Foe  
Steve Fukuda  
Judi and Neil Gader  
Mary Galicia

Dean Gavoni  
Paula Gavuglio  
Karen and Nicholas Gelbard  
Joy Germont  
Harvey B. Goldstein\*  
Adam M. Greenwald  
Nancy Binder Gurney  
Brad Hall  
Mark L. Hamilton  
Susan J. Hardisty  
Frances Hentz  
Gabby Herrera  
Nick Hofstadter  
Melanie Horowitz  
Lida Jennings  
Bret Jonas  
Jackson Kalb  
Melanie Kaloski  
Caitlyn Kellerman  
Lisa Knofel  
Law Offices of  
Margaret A. Chidester & Associates  
Macy's  
Fred Manaster  
Jose Martinez  
Edith Matthai  
Howard Matz and Jane B Matz  
Charitable Fund  
Jacquelyn McCroskey and Marc Pally  
The Mermaid  
Andrew Merrill  
Dan Millstone  
Veronica Molina  
Michelle Molnar  
Peter Montgomery  
David T. Moran  
Jesse Munoz  
Satpal Nagpal  
Marisol Naranjo  
Katherine Nelson  
Diana and Baird Nielsen  
Andrea Ordin



Carmen Aurora Ortiz  
Francine Pam  
William Payne  
Elizabeth Pierce  
Susan Pollack  
Michael Porter  
John Pratte  
Janet Pregler  
Zachary Prowda  
Elizabeth Reinhardt  
Jeamy Reyes  
Maria G. Robar  
Jeannette Roegge  
Jason Romero  
Neilson Ross  
James Rothman  
Christine and Charles Sabatino  
Neema Sahni  
Caron Sapire  
Emily Schwartz  
Marla Seto  
David Silver  
Malcolm L. Snead  
Suzanne and Marc Stein  
Caryl Strong  
SUM Enterprise Mobility  
Anne Sweeney  
Teamprovident Inc  
Josh Tohl  
Juan Torres  
Maritza Segundina Torres-Hernandez  
Evelyn Turalva  
United Way California Capital Region  
Stephanie Wayland  
Susan K. Weiss  
Wonderful Giving  
Leonard Yaghoobi  
Elayne Zhou  
Susan Zolla

**UP TO \$249**  
Robin Achen  
Nzhdeh Aghazaryan  
Ryan Aguilar  
Cristina Aguirre  
MJ Aispuro  
Alejandro Aldaco  
Michael Allen  
Michael R. Amador  
Vicky Z. Ambatielos  
Judith Angel and Bob Salvaria  
Stan Anjan  
Anonymous (5)  
Nestor Aparicio  
Eric Araujo  
The Asher Family  
AT&T  
Jacoba Atlas  
Nancy I. Babel  
Kathy Baker and Steven Robman  
Juliana Bancroft  
Sylvia Barkovic  
C. D. Barnes  
Jimmy Barnes  
Carlos and Mary Barrena  
Ann Becker  
Donna Beebe  
Lucy Beeching  
Gabiella Berchtold  
Michelle Bertinelli  
Olivia Bevilacqua and David Flores  
Jacqueline Biery  
Patricia Bintz  
Brielle Biscocho  
Joshua Bobrowsky and Daniel Tarica  
Diane Bock  
Boomtown Brewery  
Diana Borzi  
Elreen Bower  
Carolyn and James Brain  
Armando Bramasco  
Ed Bravo

Sierra Bray  
Brittney Brewer  
June Bright  
Jeanne-Marie Bruno  
Josh Burns  
Mark Burton  
Krista Cabrera  
Martha Camarillo  
Daniel Campos  
Theresa Cana  
Christina Cantero  
Gabriela Cardenas  
Nicolas Cardona  
Erika Carmona  
Moises Carrillo  
Carryl Carter  
Angelica Castro  
Helen Chaj  
Michael Chanin  
Charity On Top  
Yug Fon Chiquito  
Clark Construction Group  
Jack Cody  
Mariela Cojulun-Jucup  
Ally and Ryan Cook  
Christopher Coppersmith  
Francesca Corra  
Peter Cowen  
Keith Crasnick  
Isabel Cueva  
Maria Czinner  
Susan Daigle  
Jen Dasilva  
Veronica De La Rosa  
Francisco De La Torre  
David Dehon  
Jorge Del Real  
Nolan S. Del Real  
Maureen Delaney  
Marisol Delgado  
Anna Dezarn  
Fabi Diaz

Kathleen DiPaola  
Cristina and Gilbert Dominguez  
Gaby Donnell  
Julianne Drobner  
Harol Duenas  
Bryttannee Eaton-Jackowski  
Beverly Ehrich  
Adam Eisler  
Ellen Endo  
Renata Epstein  
Colleen Estes  
Irma Fajardo  
Sandra Falagan  
Peggie Fariss  
Darien Fehn  
Errol Fernando  
Kit Festa  
Karen Flaster  
Blandina Flores  
FM Global  
Laura Foster  
Fox Corporation  
Jordan Fox  
Kara Fox  
Christopher Franco  
Leslie Franco  
Sergio Franco  
Ian Furgerson  
Michael Gallagher  
Catherine A. Galligan  
Richard Galvan  
Roshni Gandhi  
Henry Garcia  
Joseph Garcia  
Kristine Gasporra  
Alec Giardino  
Mona Girodet  
The Giving Block  
Alan Go  
Suzanne Gokel  
Maricela Gomez  
Margarita Gomez-Nadia

## OUR SUPPORTERS, CONT.

Steve Gonzales  
Alyson Goodall  
Brian Gottschalk  
Vance Grosser  
Kathryn Gstalter  
Rafael Guirado  
GumGum  
Swapnil Gunjal  
Daniel Gutierrez  
Richard Gutierrez  
Michelle Haloossim  
Diane Hansen  
Jeri Harman  
Shahara Hassan  
Devony Hastings  
Julie Hawksworth  
Julane E. Helm  
Timothy Henderson  
Cecilia Hernandez  
Andrew Herreria\*  
Stephen Hoebink  
Song-Hee Hong  
Carol Horky  
Denise Hovey  
Eugenia Hoyne  
Diane Hvolka  
Lynn Iba  
Emily Imlay  
Intex Solutions, Inc.  
Liz Jackson  
Robin and Gary Jacobs  
Jennifer Janofsky Ralls  
Belinda Jenks  
Casey Jones  
Maggie Jorgenson  
Elizabeth and Nicandro Juarez  
George Junger  
Gerald Katzman  
Fran and David Kaufman Fox

Yvonne Kelner  
Gloria Kim  
Kathleen Kiralla  
Erica Klein  
Raymond Knudsen  
Dan Koermer  
Ed Korbel  
Gabriel Kramer  
Kelly Kruzick  
Arlette Labostrie  
Priyanka Langhe  
Sean LaPointe  
Susan Lemke  
Jeremy Levenson  
Kathy Leventhal  
Licuado Wear  
LinkedIn Corporation  
Joseph Liptock  
Eva Lizardo  
Tony Lobel  
Martha Longley  
Lynn D. Ludlam  
Gustavo Lugo-Chavez  
Jeff Lund  
Karen Macarah  
Nayobi Maldonado  
Carlie Mantilla-Jordan  
Kanan Mapara  
Giovanni Martin Aguiar  
Julio Martínez Vera  
Delmy Martinez  
Sarai and Magdala Mazariego  
Cheryl McCaughan  
Sandy McClurg  
Emma McCool  
Sheena McKinlay  
Elizabeth Meddoff  
John Medina  
Blanca Medrano

Serena Melendez  
Elsy Mendez  
Estefani Mendez  
Adrian Mendoza  
Fausto Michel  
Microsoft Rewards  
Jerad Miller  
Joseph Miller  
Lee K. and Steven P. Miller  
The Millers  
Salima Millott  
Kevin Minihan  
Scott Minkin  
Dan Moriarty  
Ross Musil  
Christina Naglich  
Suzanne Najarian  
Abram Nalibotsky  
Jessica Nava  
Lupe Navid  
Claudia Nicholson  
Joan Noneman  
Betty Norman  
Claudia Oliveira  
Stephanie Orozco  
Todd D. Osborn  
Joan Otsu  
Onik Ovanesian  
Maria Padilla  
Mimi Paller  
Zulma Palomino  
Jane Parkes  
Letisia Pedraza  
Tanashia Pennix  
Katerina Perez  
Linda Perez  
Ronald Perez  
Lisa Petraglia  
Gina Petrella  
Daisy Pizana  
Rob Polisky

Lupe Pollak  
Ana Ponce  
Gregory Potter  
Heather Powell and Josh Ludmir\*  
Katherine Pratt  
Mark Pulley  
Jessica Pynoos  
Donald Queen  
George D. Quezada  
Katherine and Peter Rabinov  
Donna Raffaniello  
Maria Ramirez  
Jose I. Ramos  
Rebecca Reber  
Liz Reinhardt  
Janet Renteria  
Katherine Reyes  
James Reyna  
Andreia Ribeiro de Noronha Sales  
Leslie Ridings  
Wendy Rissman  
Alan Robertson  
Maureen K. Robinson  
Josephine M. Rodrigs  
Anthony Rodriguez  
Edgar Rodriguez  
Eric Rodriguez  
Leticia Rodriguez  
Maria Elena Rodriguez  
Wendy Rodriguez  
Victoria Harvin Rogas  
Ronnie Rohovit  
Fidel Rojas  
Manuel Romero  
Cydny Rothe and Roy Kushel  
James A. Rothman  
Miguel Roura  
Deborah Royster  
Ari Rubio  
Katherine Ruckman  
Sherry Runyon



Patti Russo  
Kevin Saki  
Lilia and Iman Salehian  
Hilda Santiago  
Allyson Saunders  
Paul Schmitt  
Paul Schnee  
Patty M. Sciuto  
Denise Serrette  
Adrienne Sharp  
Don Shaw  
Laura Silva  
Meghan Slaven  
Morgan Sloane  
Carla Smith  
Dennis Smith  
Jamie Smith  
Robert Smoldt  
Jonathan Smoller  
Joyce Sneddon  
SoLa Rentals  
Darrel C. Spacone  
Vickie Spanos  
Siddharth Srinivas  
Judi Stadler  
Nadia Stanley  
Don Stansbury  
James Steers  
Nancy Stein  
Michal and Perry Steinberg  
Jordan S. Stern  
Albert Sterr  
Elizabeth Sutcliffe  
Swinerton  
Karen Taylor  
John Tellenbach  
Fernando Teno  
Reed Tew  
Judy Tobias  
Alfredo Torres  
Gabriella Torres

Elsa Tortella  
Kelly Tran  
Kathleen Tucci  
Andrew Turf  
Amy Turk  
Drew Turner  
Kristine Udall  
Betsy Uhrman and Joel Snyder  
United Way of Orange County  
Jimmy Urizar  
James H. Uyeda  
Steven Vanderveer  
Paula Vargas  
Dave Velasquez  
Esperanza Vencebi-Bacilio  
Jivan Vengco  
Jackie Verdugo  
Bonnie Voland  
Kathleen Vu  
Richard Wallace  
Richard Warren  
Henry Weeks  
Richard J. Welch  
Deborah White  
James Wiat  
Michelle and Wellesley Wild  
Sandy Wilson  
Arriana Yiallourides  
Joyhanna Yoo  
Kseniya Yorsh  
Jessica Yoshimoto  
Kent Young  
Roger Zamora  
Estela Zarate  
Diana Zelezny  
Jessica Zhou  
Isabelle Zimmerman and Sylvia Watson

\*Board affiliated gift  
♦Futuro Family member

*PLN does its best to recognize all contributions received during the fiscal year from, July 1, 2024 to June 30, 2025. If your name was inadvertently omitted, please notify us at [info@paralosninos.org](mailto:info@paralosninos.org).*

Every donation makes a **BIG** difference for PLN families.

**367** DONORS WHO GAVE UP TO \$250  
GAVE A TOTAL OF **\$28,416!**

## GOVERNMENT GRANTS

Each year, PLN programs are supported by city, county, state, and federal funding. During the 2024-2025 fiscal year, PLN also received funds through the following competitive government grants to further support its work.

Bureau of Justice Assistance - STOP School Violence Grant

California Department of Education - Community Schools Grant

The Office of Family Violence Prevention & Services - Culturally Specific Domestic Violence and Sexual Assault Discretionary Grant

U.S. Department of Education - School Based Mental Health Grant



# IN-KIND DONATIONS

Donations of goods and services like school supplies, baby safety equipment, and technology can change lives. They help families focus on their educational and emotional goals by easing economic burden. We deeply appreciate every single donation.

The Aster  
Rosie Baldonado  
Bamko  
Lorraine and Joe Berchtold\*  
The Beverly Hilton  
Bike Shed Motor Co.  
Board of Friends of Virginia Robinson Gardens  
Boeing  
Bookworm  
Boomtown Brewery  
Kelly and Bill Burton\*  
California State University, Los Angeles  
Lauren Carson  
Caruso Family Foundation  
Melissa Caskey  
Jaylene Castro  
City National Bank  
Clase Azul  
Con Todo Press  
Marlena and Matthew Conroy  
Cotton On Group\*  
Veronica De La Rosa  
Elizabeth De Martini  
Diane de Silva  
Cristina and Gilbert Dominguez  
Ian Fishman  
Carla Fuentes  
Joe Gallagher  
Kelly Gologly  
Gorjana  
Teamprovident Inc  
Cathy and Ed Hession\*

The Huntington  
Janelle Iantorno  
JW Marriott Los Angeles L.A. LIVE  
Judith and Donald Katz  
Andrea Kavooosi  
Kroger  
KROQ-FM  
LA County Fair  
Lola Rae LLC  
Los Angeles Chargers  
Los Angeles Cold Storage Company  
Los Angeles Dodgers Foundation  
Los Angeles Dodgers LLC  
Los Angeles City Fire Department  
Los Angeles Football Club  
The Los Angeles Kings  
Jose Medina  
Andrew Miguel Arcilla  
Milk + Honey  
Valerie Mitchell  
Alexia Muller  
Nassim Nazemi  
NBCUniversal  
Mona and Tony Nicholas  
Northrop Grumman  
Olive & June  
Pacific Park  
Francine Pam  
Pasadena Symphony and Pops  
Diane and David Paul  
PLZ Corp  
Progression Wellness  
Proper Hotel Group

Allison and Bret Quinlan  
Rhino Entertainment  
Saie Beauty  
Laura Schaeffer  
Sony Pictures Television\*  
Stanley  
Alison Taormina  
Tastemade  
The Voice  
University of California, Los Angeles  
Vespaio  
The Walt Disney Company  
XIV Karats LTD  
Lisa Zakar  
Erica Zendejas

\*Indicates board affiliation





## OUR VOLUNTEERS

Thank you to all of the groups, organizations, and companies who volunteered in FY 2024-2025!

Arch Insurance  
Archer School for Girls  
Athleta Studio City Plaza  
Babylist  
Bamko  
Bloomingdale's  
Boeing  
Bookworm  
Bryson Gillette\*  
Capital Group\*  
Caruso Cares  
Centric Brands  
City National Bank  
Claremont Lincoln University  
Clase Azul  
Cotton On Group\*  
Dartmouth University  
Ellis George Cipollone O'Brien  
Annaguey LLP  
Fox HOLA  
Ella Fitzgerald Charitable Foundation  
Friars Charitable Foundation  
GAP  
Gersh  
Global Initiatives Alliance  
GoodRX  
Grand Performances  
Harvard-Westlake School  
Hunton Andrews Kurth LLP  
Insurance Industry Charitable Foundation  
Kinecta  
LA 2050  
Los Angeles Chargers  
Los Angeles Dodgers Foundation  
Los Angeles Fire Department  
Los Angeles Kings

Los Encinos School  
Loyola High School  
Marriott  
Milken Community School  
Mira Costa High School  
National Charity League  
Netflix\*  
Northrop Grumman  
Norwalk High School  
Paramount  
Pfaffinger Foundation  
Polytechnic School  
Prosearch  
Rhino Entertainment  
Ross  
Rotary Club of DTLA  
SAGE Publications  
Sima AI  
Sony VOZ\*  
Spectrum  
Tastemade  
Teamprovident Inc.  
The Wallis  
UCLA Geffen Academy  
United Talent Agency Foundation  
USC Caruso Catholic Center  
USC LULAC  
USC Phi Alpha Honor Society  
Verizon  
VML  
The Walt Disney Company  
WME

\*Indicates board affiliation





## OUR VOLUNTEERS

Our volunteer program grew by 47% in FY2024-2025!

We are so grateful to the hundreds of Angelenos who donated their time to beautifying campuses, assembling care packages for frontline staff, and sharing new skills with young people in our community. Through Felices Fiestas, Reading is Leading, Career Day, and more, **609 volunteers participated across 66 events** this year. Your presence means so much to our families. Every interaction tells them that they are not alone, their community cares, and their city stands with them.

**4,168**

volunteer hours

**\$131,292**

total monetary value  
of hours worked

**\$74,995**

raised in gift cards and  
donations to purchase goods



## PARTNER SPOTLIGHT

A big shout out to our partners at GoodRX, whose teams consistently showed up for our families in FY2024-2025. During their annual GoodRX Gives Back Day, dozens of volunteers spent time at Para Los Niños Charter Elementary School preparing the campus for our scholars' return by beautifying our playground and painting welcome signs to brighten our corridors for the first day of school.

Their team members not only donated to our annual holiday event, Felices Fiestas, which brought holiday magic to unhoused families in our Skid Row community, but also personally provided wish list items to families in need across all of PLN's programs.

Thank you to all of our partners!



## HOW TO GET INVOLVED

### DONATE

Invest in the lives of 10,000+ children, youth, and families.

### JOIN OUR CORAZON CIRCLE

Your recurring monthly gift ensures that Para Los Niños can show up every single day—in classrooms, in homes, and in neighborhoods—with the support families need to thrive. It means stability for our teachers and staff, continuity for our students, and long-term impact that changes generations.

### JOIN THE FUTURO FAMILY

Consider donating real estate, stocks, or other assets in return for a series of regular payments; naming Para Los Niños as the beneficiary of a life insurance policy; or gifting other liquid or nonliquid assets, which can offer generous tax benefits. Consult with your financial advisor and contact us at [futurofamily@paralosninos.org](mailto:futurofamily@paralosninos.org) to learn more.

### JOIN OUR TEAM

We employ preschool teachers, elementary and middle school teachers, mental health professionals, case managers, career counselors, community ambassadors, and many other roles—all working to serve children, youth, and families in Los Angeles.

### VOLUNTEER OR PARTNER

We welcome volunteers from corporations and schools, individuals, and community partners to provide resources across PLN programs. Check out [paralosninos.org/get-involved](https://paralosninos.org/get-involved) to learn more or scan the QR code.





Para los niños



for the children

@PARALOSNINOSORG

5000 HOLLYWOOD BLVD.  
LOS ANGELES, CA 90027

PARALOSNINOS.ORG