



paRa loS niños  
for the childRen

# Para Los Niños

2020-2021 ANNUAL REPORT

**Excellent Education.  
Powerful Families.  
Strong Communities.**



# Table of Contents

Who We Serve..... 4

Our Model ..... 5

Our Impact ..... 6

Highlights of 2020 ..... 7

Therapy to Thrive ..... 8

Keeping Children and Staff Safe..... 9

Para Los Niños in the Community.....10

Community Impact .....11

What We’ve Accomplished .....12

Where We Are Headed.....13

Our Donors .....14

In-kind Donors.....18

2020 - 2021 Financials.....20

Janet’s Story .....22

Board of Directors .....24

Executive Team.....24

Get involved.....26

Para Los Niños Partners.....27

# Letter from the CEO & Board of Directors Chair

Dear Para Los Niños Supporters,

Our 2020-2021 program year was unlike any other in PLN’s history. We saw the continuation of our work to combat the impact of COVID-19 -- relief efforts that had started at the beginning of the pandemic-- and by September 2020, our first classrooms started to reopen. What we learned from those initial re-openings about protecting our children, families and staff laid the groundwork for a more comprehensive return to classrooms, offices and in-person programming throughout the rest of 2020 and into 2021. Our physical safety protocols were, and continue to be, mighty, extensive, and effective. But what we did, and what we learned, goes way beyond physical safety.

True to who we are at Para Los Niños, we recognized that the community we serve is disproportionately impacted by this crisis, and that the way to address that impact was to lean into our relationship-based approach. For us that has meant understanding that the path to wellness is in our deep connection with the children, youth and families we serve, and in building on and nurturing that connection to mount a collective response to a daunting crisis. The pandemic has only compounded the effects of generational and institutional inequity – and it has lit a fire under our work and increased the urgency to deepen the relationships we have with those we serve in order to combat the trauma they face every day.

This has been a year of many unique challenges, but also of so many achievements. The resourcefulness of our students, families, staff, and communities continues to amaze us all. Faced with unprecedented barriers, our attendance was high and enrollment in mental health support actually increased.

Additionally, our community work expanded to reach many more of those in need, and to lift voices towards systemic change – to address the issues defined by our communities as key barriers to success. Whether it was through our work to distribute food, supplies or technology, surveys, gatherings or focus groups, we met our community members online and safely outdoors to listen, learn, and strategize as to how we could maximize our support.

As you look through this report, we hope you feel proud to be a supporter of what we all accomplished together. Our recognition in this year’s issue has expanded to include in-kind donors and partners, because, like no year before, this year it truly took all of our networks to help children, youth, and families thrive.

We know you too will be inspired by the stories of Lucia and Janet included in this report. They are just two of so many, but their journeys reflect the people of Para Los Niños. The strength and determination evidenced in their stories is a constant reminder of the importance of our work. We are here to be that extra hand, the connection to a resource, and the partner through difficult times as our children, youth, and caregivers strive to take the next step toward their goals.

We hope that you will take a few minutes to peruse our website, [paralosninos.org](http://paralosninos.org). We have revamped our online presence to put our mission in the foreground and to emphasize the expansive impact we have on the Los Angeles communities we partner with each day.

Thank you for being in our family,



Drew Furedi  
President & CEO



Marjorie Ehrich Lewis  
Board of Directors, Chair

# Who We Serve

All children, youth, and families should have the opportunity to reach their fullest potential.

No one should be held back based on their income, immigration status, home language, or zip code. While research shows that these factors can create barriers, Para Los Niños partners with our communities to help students and families get to where they want to be: ready, for a future of their choosing.

10,000+

Children, youth, and adults served in the 2020 fiscal year

Under \$15,000

Annual income for the majority of families receiving support from Student & Community Services



67%

Families speak Spanish as their primary language

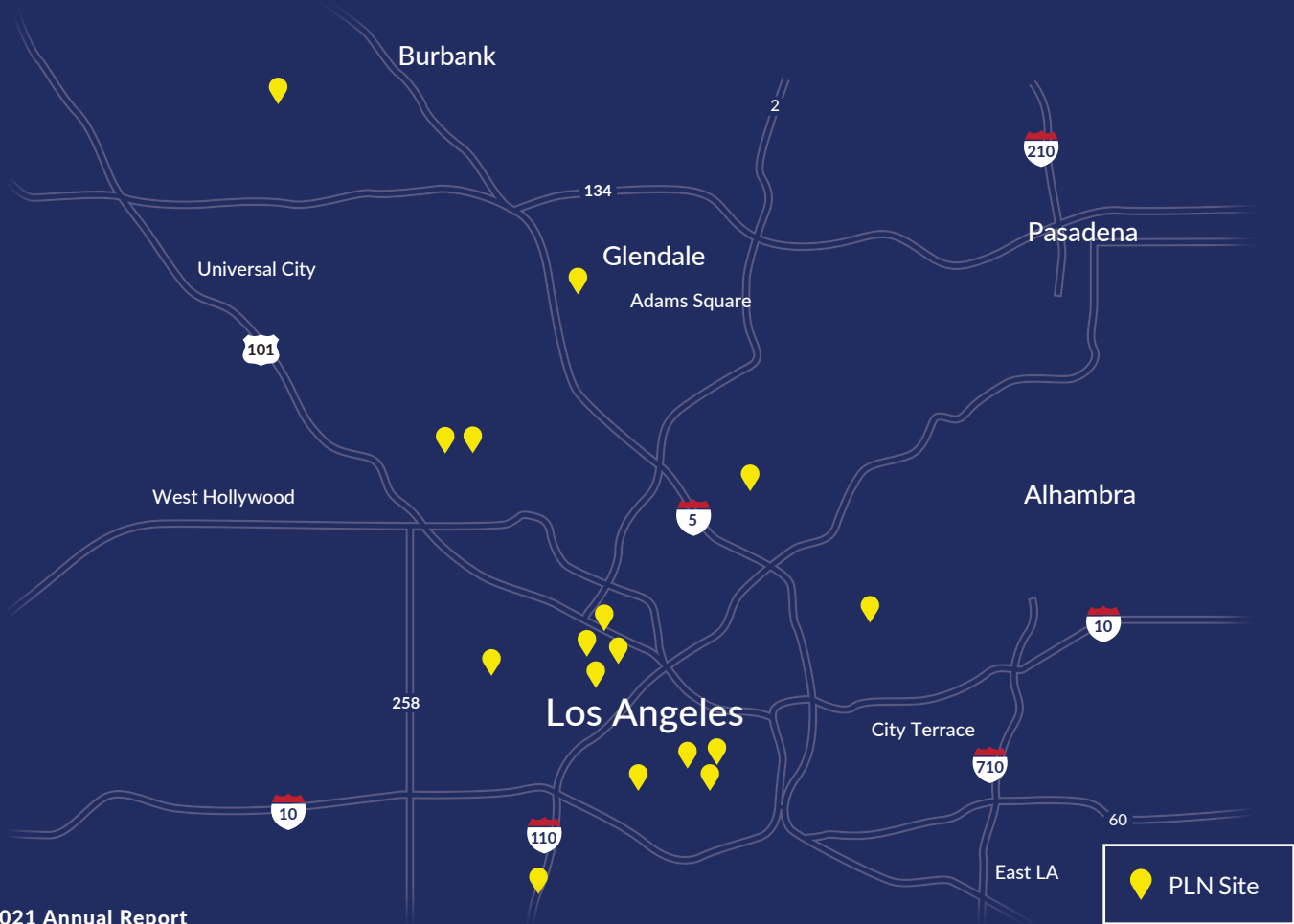


52%

Para Los Niños parents do not have a high school diploma



We serve families from all across Los Angeles County.



# Our Model

We believe in the children, youth, and families we serve. Through excellent education, supporting powerful families, and strengthening our communities, we can all thrive together.



## Early Education

At our seven early education centers, we provide more than 450 children with high-quality academic, social, and emotional education to become lifelong learners. Working closely with children as young as six-weeks and engaging parents, we ensure they have a strong support system that will carry them to success well beyond preschool.



## TK-8TH Education

Our Gratts Primary Charter School, Charter Elementary School, and Charter Middle School provide quality education, wraparound services, and after-school services to nearly 1,000 children grades Transitional Kindergarten (TK) - 8. Our project-based approach keeps students intellectually enriched and our social emotional integration develops vital skills like confidence and character.



## Youth Workforce Services

Over 2,000 youth and adults are provided opportunities and support to complete high-school, move on to college, build their careers and engage in their community each year. Through workshops, mentorship, internships, and case management, our staff helps to open new opportunities for students and families to become self-sufficient and reach their full potential.



## Student & Community Services

We build a strong foundation with thousands of children and adults annually through leadership and support groups, ESL education, in-home counseling, clinical support, and parenting workshops. Our services strengthen families and create a supportive community to help children and families thrive.



# Our Impact

The Para Los Niños model provides a comprehensive, holistic approach to break the cycle of poverty and help children and youth thrive.



1.5 million

Meals served to PLN families and community members



18,556

Hours of mental health sessions for children, youth, and families



918

Youth received paid internships totaling nearly 90,000 hours and over \$1 million paid



20%

Growth in reading comprehension at PLN Charter Elementary School across all grade levels



100%

Of Youth Workforce Services' college success program participants remained in school



3,447

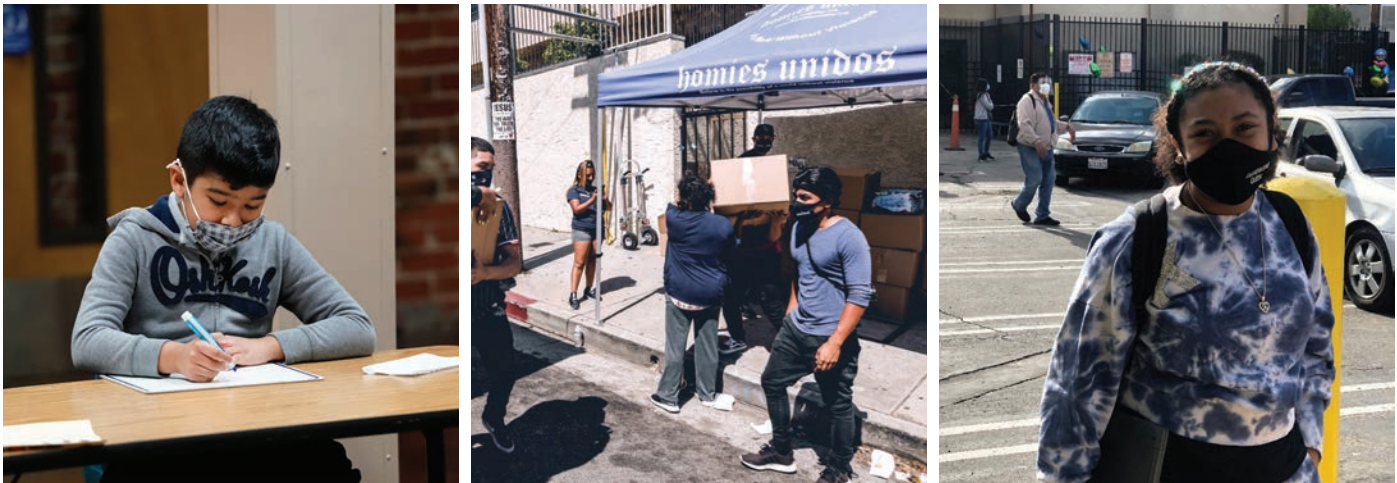
Children and families received education and support from our Student & Community Services teams

# Highlights of 2020

While the year posed extreme challenges, there were many moments to celebrate and opportunities to support our families like never before.

- **Early Education** centers re-opened their centers in addition to distance learning in September 2020 - starting with just over 100 students and quickly increasing to nearly 200 by Spring - allowing families to get back to work and students back on track.
- **Charter Schools** re-opened in April 2021 for high-risk, high-need students to have access to secure internet, technology support, and three meals a day.
- **Youth Workforce Services** partnered with the Los Angeles College Promise Program, ensuring that over 200 students from East Los Angeles College and Los Angeles City College worked one-on-one with academic advisors, received resources, job information, and were supported through the year.
- PLN saw an increase in **parents enrolling in mental health services** - a great sign that virtual sessions gave greater access, and that the stigma against therapy is shrinking.
- **CARES Act granted \$1 million** for 3,000 families to have food delivered to their homes for four months, plus hundreds of thousands of dollars in grocery gift cards.
- **Ford Motor Company** secured a discount on a new truck for our facilities team to manage the influx of donations and needs across our 17 sites, and donated air filtration systems for our classroom and 100,000 masks for our community.
- **Celebramos on May 5, 2021** celebrated the moments of joy and hope through the difficult year - welcoming staff, donors, and families to join the fun.
- Over 1,000 residents, community based organizations, elected officials, and philanthropic leaders attended the first virtual Best Start Region 1 Driving Equity and Justice Community Town Hall on April 24, 2021. The initiative was funded by the **Robert Wood Johnson Foundation** to develop a call to action - a Community Bill of Human Rights.

Learn more about these highlights and more at [paralosninos.org](https://paralosninos.org).



# Therapy to Thrive

Para Los Niños, mental health staff support our students, and students across Los Angeles. Three years ago, Daibelis “Dee” Yerena, LMFT, Intake Coordinator & Therapist at Para Los Niños, was referred a family from LAUSD whose daughter was seriously struggling in her kindergarten class. Every day the family would get a call that Lucia\* had left her class, had cursed at a teacher or student, or had thrown things out of anger. This impacted the whole family, and was threatening even their employment, as mom had to keep leaving to pick Lucia up.

The family felt that the school had labeled Lucia as a “bad kid” and wasn’t supporting them. Lucia was falling behind at school due to all the time lost for discipline. Dee developed a plan, and started individual therapy sessions with Lucia, family sessions with Mom, Dad, Lucia and her little sister, and set meetings with the school to ensure Lucia was safe and on track.



Play and art based therapy sessions with Lucia allowed Dee to see the outbursts and connect with Lucia – building a safe and trusting relationship. Dee discovered that mom and dad often fought and Lucia was mirroring this behavior – just as her younger sister was starting to mirror her. Dee met with the parents for couple’s therapy to help them communicate, build conflict resolution skills, and strengthen their relationship. “Doing all the sessions – individual, couples, and family therapy really gives you the context to really support the family,” says Dee of the benefit of PLN’s integrated model.

Dee also met with teachers weekly, and supported the parents in formally requesting an Individualized Education Program (IEP) for Lucia to have the extra support she needed. With the IEP, Lucia was granted more time for subjects and placed in a smaller class setting. “From there

we started to see more and more progress,” says Dee. “She started thriving academically, and in the classroom because of the relationship she was building with the teacher, and she was now seeing school as a support – not a threat.”

Lucia’s parents also now had the tools at home to connect with each other and with Lucia, to better support her. By June 2020, knowing the family was on the right track and trust was restored, Dee was able to close the case.

Recently, Dee received a call from Lucia’s mom, “Mom called to share how she and her husband were doing well in their relationship, and that Lucia was doing well academically, that she was thriving.”



## Keeping Children and Staff Safe

Para Los Niños prioritized how to get students and staff safely back in our buildings as soon as possible.

**35+** training sessions conducted for staff and leadership to be informed on safety practices

Over **10,000** masks distributed to children, youth, and families

**Covid-19 Vaccine**  
PLN supported the scheduling and transportation for COVID-19 vaccines to support community members and PLN staff to protect themselves and their communities

From the start of the pandemic, PLN established a COVID-19 taskforce to tactfully and efficiently address the needs of our children and families, but also the needs of our staff. In order to reopen our classrooms, we needed to communicate often with county and state officials, but also with our staff to ensure they felt supported during this uncertain time.

Despite the risks, our staff were eager to open our doors and engage with our communities. Many even met clients in parks with six feet distance and masks.

When the early education centers first opened in fall of 2020, our Early Education Team, Operations Team, and the COVID-19 taskforce quickly developed the protocol and laid the groundwork for the charter schools and family support services to resume in-person meetings as well. While we continue to adapt, we are confident in the safety of our campuses today and are hopeful as we learn more and more to keep all safe and healthy.



# Para Los Niños in the Community

In the summer of 2020, while communities across the world were still trying to find ways to meet the unprecedented needs of those most acutely impacted by the pandemic, the Para Los Niños Community Transformation teams expanded their efforts to directly respond to our families’ areas of need.

Throughout the summer, our distributions of food, cleaning and hygiene supplies, served tens of thousands. With our deep community relationships - thanks in a very large part to our Promotora network, organization partners, and our dedicated staff, we quickly developed cooperatives with partners to ensure that distributions were promoted and accessible to those unable to pick up the goods in person by mobilizing delivery services.

Due to our great success in supporting thousands, PLN’s Best Start initiative was granted \$1 million by First 5 LA in spring 2020 to support families in our Best Start communities, and another \$1 million by the Los Angeles County through the CARES Act in December. PLN’s Best Start Initiative maintained their monthly meetings online through additional partnerships with Child360, T-Mobile US, Jamf and EBF Inc. Together they provided 600 iPads to create a virtual collaborative space so meetings could continue.

Our Project Innovations LA (PILA) teams managed the Community Ambassador Network, created by the Department of Mental Health, to educate communities on COVID-19 and link residents to resources for PPE, cleaning supplies, educational resources, and vaccines. Throughout downtown, East Los Angeles and Southeast Los Angeles, PLN was partnering with residents and organizations to support those who needed it most.

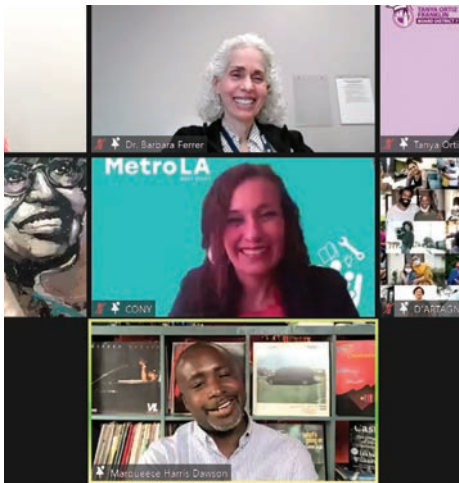


## Community Impact

Over **32,000** Food boxes distributed through Best Start and Project Innovations L.A. efforts starting in March 2020 - and still going.

**3,500+** Supplies for infants and toddlers to stay healthy and dry - diapers, wipes, and formula.

**862** Residents virtually attended COVID-19 presentations by Community Ambassadors, to keep safe and informed.



## Pro•mo•to•r/a

Promotoras/es are community members who are familiar with the norms, language, and habits of the neighborhoods in which they live. They are specially trained in community organizing and health education to engage, support and strengthen relationships with parents, residents and agency representatives around health, education, system navigation and leadership development. They facilitate authentic and transformative relationships through their shared experiences within the communities they serve.





# What We've Accomplished

Despite the additional challenges of the year, our strategic plan moved forward. In year three of our five-year plan, we continued to build our internal systems and refined our curriculum for greater program continuity of care.

In 2020-2021, PLN continued to build on our strategic plan work, here are some examples of the completed steps:

- Articulated Para Los Niños' Theory of Change, clearly defining the shared intended impact of all programs and departments to achieve the vision of PLN children and families. Defining this allows for the further development of aligned curriculum across all departments for a unified continuity of care.
- Produced the PLN Community Resident Engagement and Leadership Development Framework, a curriculum incorporating best practices from the field to ensure parents and families have the skills and resources necessary to create change in their children's schools and in their local communities.
- Leadership Training series executed virtually for all PLN leaders – including sessions on performance management, reflective practice, and organization budgets – building stronger more equipped leaders for power teams in all departments.

Activities aligned to System Goal 1: Leaders have what they need to lead effective, successful teams.

Activities aligned to Program Goal 4: PLN leaders execute on an org-wide vision, implement aligned goals, and maintain a culture of compassion and excellence

Activities aligned to Program Goal 2: PLN families and communities are engaged and empowered



# Where We Are Headed

## Program Goals

1. Children and youth are physically, socially and emotionally healthy.
2. Families and communities are engaged and empowered.
3. Children and youth are developmentally and academically successful, and ready for the future.
4. Leaders execute on an organization-wide vision, implement aligned goals, and maintain a culture of compassion and excellence.

## System Goals

1. Leaders have what they need to lead effective, successful teams.
2. Staff have what they need to provide excellent services.
3. Organization is financially thriving.
4. Stakeholders develop a clear growth plan.



By providing an excellent education from Pre-K through high school;



Building strong communities by recognizing families' assets and developing them as change agents;



Promoting powerful families through support programs and comprehensive social, emotional, and community-based services, and;



Para Los Niños will realize its vision of thriving children and youth.

# Thank You to All Our Donors!

## Donors from July 1, 2020 - June 30, 2021

We appreciate the generous support from all the foundations, corporations, and individuals that make our work possible.

### \$250,000 and Above

Caruso Family Foundation  
Gomez Family Trust  
The Sam Simon Charitable Giving Foundation

### \$100,000 - \$249,999

The Ahmanson Foundation  
The Atlas Family Foundation  
The Ballmer Group Philanthropy  
Andrea and Blake Brown  
The Carl & Roberta Deutsch Foundation  
The Ralph M. Parsons Foundation  
Ann and Robert Ronus  
UnidosUS

### \$50,000 - \$99,999

Anonymous  
Allen Blue  
The Capital Group Companies Charitable Foundation\*  
Dwight Stuart Youth Fund  
H Code Media  
The Kaleta A. Doolin Foundation  
The Rose Hills Foundation  
Steinmetz Foundation  
United Philanthropy Forum  
The Walton Family Foundation, Inc.  
WHH Philanthropy

### \$25,000 - \$49,999

Amazon  
The Bank of America Charitable Foundation  
California Community Foundation  
California Partnership to End Domestic Violence  
Carol and James Collins Foundation\*  
Ann Daly and John Gustafson  
Diane and Dorothy Brooks Foundation  
DiCecco Family Foundation  
Joseph Drown Foundation  
Kautz Family Foundation

Kenneth T. and Eileen L. Norris Foundation  
The Mindel Family Foundation  
Paul Hastings Cares Foundation  
Robert Wood Johnson Foundation  
Simpson PSB Fund  
Chantal and Mario Spanicciati  
Walter J. and Holly O. Thomson Foundation

### \$15,000 - \$24,999

Anonymous x2  
Constellation, an Exelon company  
Delta Dental Community Care Foundation  
The Ella Fitzgerald Charitable Foundation  
Emquies Family Support Foundation  
KROQ-FM  
The Mark Hughes Foundation  
Adria and Pedro Marti\*  
MUFG Union Bank Foundation  
Pathways LA  
Pfaffinger Foundation  
Supervisor Mark Ridley-Thomas  
U.S. Bank  
The Walt Disney Company

### \$10,000 - \$14,999

Albertsons Companies Foundation  
Holly and Albert Baril  
Lorraine P. and Joe Berchtold\*  
Brentwood School  
Kelly and Bill Burton\*  
Caruso Employees  
Kelvin and Hana Davis  
First Republic Bank\*  
Edwin and Cathleen Hession\*  
Judith and Donald Katz  
Marjorie and Steven Lewis\*  
Los Angeles Water & Power Employees' Association  
The Louis L. Borick Foundation  
The Minc Family Fund  
Andrei Muresianu\*

Bill Panzera  
Beverly and Fredric Reichel  
Rachel Fiset and Ronnie Roy\*  
Sullivan Curtis Monroe Insurance Services, LLC  
United Way of Greater Los Angeles  
Walter Parkes and Laurie MacDonald Charitable Foundation\*  
Aviva Weiner  
WHH Foundation  
William H. Hannon Foundation  
Malin Wong and James Kissane\*

### \$5,000 - \$9,999

Arent Fox LLP  
Gail and George Baril  
Alexander J. Caruso  
CBS Media Ventures\*  
Karen Choi  
Cotton On USA, Inc.\*  
Crane Fund for Widows and Children  
Terry and Judy Crowley  
Dutton Testamentary Trust  
Susan and Scott Edelman\*  
Anna May and Tim Feige  
Alene and Robert Gelbard  
Bobby Green  
Greenberg Traurig, LLP\*  
GRIFOLS  
Lynn and Craig Jacobson  
Johnny Carson Foundation  
KLM Foundation  
Guy and Kendra Langer  
Jamie and Rob Leff  
Los Angeles Cold Storage Company  
Lucille Ellis Simon Foundation  
Cheryl Marino  
Mary Ann and Murray McQueen\*  
The Melvoin Foundation  
National Charity League Los Angeles  
Netflix  
Nickelodeon Studios

Jill and Mark Pan\*  
The Peter A. & Elizabeth S. Cohn Foundation  
Rhino Entertainment  
Rebecca and Matthew Rich\*  
Rockefeller Philanthropy Advisors  
Share Family Donor Advised Fund  
Supervisor Hilda L. Solis, LA County, First District  
Southern California Grantmakers  
Evan Strauss  
Target  
Kathy and Charles Toppino  
Weingart Foundation  
Cindy and Jake Winebaum\*  
Peg Yorkin

### \$2,500 - \$4,999

Alperstein, Simon, Farkas, Gillin & Scott, LLP  
Anonymous  
The Benevity Community Impact Fund  
Charter Communications  
Becca and Jonathan Congdon  
Friars Charitable Foundation  
Michael L. Galindo  
Glaser, Weil LLP  
Sarajane and Zac Guevara  
Harrison-Chevalier, Inc.  
Lisa and Victor Kohn  
Christina Lopez  
Manufacturers Bank  
Sarah Wick and Robert Padnick  
Pedro Pizarro  
The Sheri and Les Biller Family Foundation  
Laura Silva  
Smallman Family Fund  
Sarah Tuttle and Benjamin Kramer\*  
Michelle and Wellesley Wild  
The Willametta K. Day Foundation  
Janini and Micheal Wunderman

### \$1,000 - \$2,499

Leticia Acosta  
Jessica and Paul Allen  
Laura Fry and Scott Altman  
The American Heart Association  
Dr. Andrew Charles  
Anonymous x4  
Avalon Bay Communities, Inc.  
Mike and Trish Berchtold  
David Berman

Andrew E Bogen  
Brandon Helgerson-Ortmeyer  
Krysten A. Brennan  
John P. Brincko and Debbie Brincko  
Patricia Brody  
Larry and Shelly Brown  
LJ Brown  
Madison Brown  
CA Fashion Association Community Development Foundation  
Donna and Marc Caruso  
Martha and Tim Catlin  
City First Bank\*  
Roy E. Crummer Foundation  
Ms. Ellen Danna  
Jonathan David  
DCI Engineers  
Nina L. Hachigian and Thomas Joseph Deegan-Day  
Clare and Warren Dern  
Tony and Christine Digiovanni  
Lynda and Al Fadel  
Gail and Michael Feuer  
Gisela and Jeff Friedman  
Naya Bloom and Drew Furedi  
Gendler Teich Family Charitable Fund  
Gloria Gerace and Thomas Mone  
Ashley Lewis and Jim Gilio\*  
Kathryn Girard and Susan Vogelfang  
Claude Goldenberg  
Patricia Gomez  
Nicholas Grad  
Hathaway Dinwiddie Construction Company  
Michael and Tanya Heldman  
JB Consulting Services LLC  
Bill Johnson  
The Kleiner Cohen Foundation  
Robin Kramer  
Las Vegas Raiders  
Sandro Lazzarini  
Gail Lees  
The Gary and Katy Leff Family  
Melissa and Peter Lopez  
The Los Angeles Flower Market  
Loyola High School of Los Angeles  
Heather Powell and Joshua Ludmir\*  
Jeff Melvoin  
Katie Mercer and Jorge Fernandez  
Michael and Susan Horn Family Foundation  
Vizhier Mooney

Janet and Patrick Moore  
Maureen and Greg Morrison  
John Ohanesian  
O'Melveny & Myers LLP  
Eleanor and Glenn Padnick  
Madhuri Parikh  
Payden & Rygel  
Simone and Patrick Purcell  
QueensCare  
Kamran Razavi  
Mike Royce  
Ruth & Sonny Singer Foundation  
Wesley Scruggs  
Lauren and Jeffrey Segal  
Norma Silva  
Socius Foundation  
Steven and Laura Mayer Family Foundation  
Divya and Satish Subramanian  
Lisa and Mike Tan  
Mimi and Jose Tejada\*  
Carrie and Peter Tilton  
Joan Velazquez  
Fran and John Wasley\*  
The Wonderful Company Foundation

### \$500 - \$999

Marlo D. Acosta and Edgar Villarreal  
Sandra Aispuro\*  
Kathleen F. Allen  
Alex Amirkhanian  
Jane and Harry Scheiber  
Sarah Angel and Dan Nieman  
Ellen and Steve Angel  
Anonymous x4  
Arch Insurance Group Inc.  
Brinah and Roy Bank  
Kim and Roselyn Batcheller  
Nancy Binder Gurney  
Gigi Bloom  
Janice Bradshaw and Christopher Kearley  
Deanette R. Brewer  
Cheryl Charles  
Children's Burn Foundation  
Comcast NBCUniversal  
Compass Cares  
Corner Construction Co., Inc.  
Anna Dezarn  
Facebook Giving  
Federal Home Loan Bank of San Francisco  
Sarah Figueroa-Freeman



# Our Donors cont.

Frontstream	Winebaum Family Foundation*	Katherine and Peter Rabinov
Enrique Garcia	David Zebrack	Rebecca Reber
Gensler Los Angeles		Ryan Robledo
Camille Gonzalez	<b>\$250 - \$499</b>	Maria Ines Rodriguez
Elissa Goodman and David Neale	5B Events	Prof. Jeffrey Rosensweig
Robert Grillo	Joni Angel and Justin Seidner	Neilson Ross
Guaranteed Rate Inc*	Anonymous x3	James Rothman
Happier Living	Cecilia Ball	Joseph Sassone
Andrew Herreria*	Carie and Josh Bloom	Josephine Schorlemer
Mary Ann Hunt-Jacobsen	Elizabeth Cabral	Charlie Steinmetz
Robert W. Johnson	Angela Capone	United Way California Capital Region
Tara Kissane	Nikos and Kimberly Carli	Upward Roots
Zach Lasry	Kelley and Eric Coleman	Rachel Vogel
Paul McCaffery	Mariano Melendez and Elena Cortez	Sondra and Norman Weinstock
Jessica McNicholas	Eric Haas and Chava Danielson	Barbara B. Widdess
Jan and Michael Meisel	Mark David	Daniel P. Wingerning
Sonya Moreno	Wes Dooley Jr.	Arturo Yanez
The Morrison & Foerster Foundation	Michelle Alexandra Doran	<b>\$100 - \$249</b>
Deena and Edward Nahmias	Michele Dumont	Solomon Abdella
Jill and Andrew Nieman	Edison International Employee Contributions Campaign	Amazon Smile
Victoria Nourafchan and David Rosenstein	EdTec Inc.	Natalie Amirieh
Anthony Pacheco	Anne Ferree	Matthew K. Anderson
Jamie Parry	Fibernetics	Thomas Angell
Chaz Perea	Gemelli Restaurant Partners LP	Celeste Anlauf
Linda and Lawrence Rauch	Linda Gersh	Anonymous x5
Gabriel Robles*	Judith and Joseph Golden	Claudio Arias
Rosen Family	Harvey B. Goldstein	Tom Aronson
Elizabeth Saiger	Joy and Javier Gonzalez	Lori Baas
Linda and Miguel Sandoval	Mark L. Hamilton	Jeff and Millie Baird
Sarah Alexandra Schweitzman	Judi and Arnie Herrmann	Katherine Balatbat
Waqar Sheikh	Jacobsma Law	Sharon Berg
Susan Shieldkret and David Dull	Sudharsan Kannan	Paul Blodgett
Karen and Joel Singer	Randall H. Kennon	Lonna Bloom
Gretchen and Charles Sippial	Alan Klein	Carolyn and Jim Brain
Sara Smith and Vince Sieber	Marsha Barr Levin	Paula Brown
Darrel C. Spacone, bCRE	Thomas T. Luong	Gabriela Cardenas
Michael Swartz	Fred Manaster	Emmy Cattani
Synchrony	Mathew Robert Troncao	Elena Cervantes
Riyoko Tanaka	Jane and Howard Matz	Charcoal Venice Partners LLC
The TCW Group, Inc.	Shelley McEwan	Trenton Cohen
Allison Thomas	Swati Mehta	Clark Construction Group
Joanne Valli-Meredith and Glen Meredith	Melisse Two Partners LLC	Alicia Corona
John Walsh	Eddi Ortiz	Cameron Crosby
Thelma Waxman	Carmen Aurora Ortiz	Rachel Decker-Sadowski
Jessica and Gil Weisblum	Candida Piaggi	Denise DeSantis
Mary Westbrook		Jefferson Dickson
<b>16 2021 Annual Report</b>		

Toni Digiovanni	Jacob Koskoff	Jon Pynooos and Elyse Salend
Marianne Dozier	Alex LaCasse	Laura Riley
DriveWise Auto, Inc.	Jason Lamin	Cesar Rocha
DSH // architecture	Karla Lara	Jazmin Rodriguez
Kate DuFine	Kari Lauritzen	Roberto Rosas
Cheryl Englehart	Christopher Lee	Christine and Charles Sabatino
Hilda Escobar	Ellenand Sol Liebster	Christian Santizo
Phillip Eskenazi	L'Ermitage Foundation	Blair Schlechter
Paul Furedi	Sheri Linzell	Alexis Schwab
Judi and Neil Gader	Martha Longley and Warren Entner	Martine Singer
Natalia Garcia	Jonathan Lopez	Smart & Final Charitable Foundation
Guzman Translation & Interpreting	Emily Lopez	Jamie Smith
Rob and Beth Healy	Lramwrites (Ramirez Productions)	St. Paul the Apostle Seniors Ministry
Sharon Hearn	Seng Ly	Judi Stadler
Ken Hertz	Becky Ma	Ilene Stadler
Jane Hinton	Christina Mariscal Pasten	Suzanne and Marc Stein
Irene Ho	Delmy Martinez	Susan Sterling and Edward Myers
Lauren Ivester	Peter McGoldrick	Josh Tohl
Candida Jacinto	Kevin McMenemy	Carla Torres
Robin and Gary Jacobs	Gloria and Arthur Mehlman	Marilyn Tucker
Justin Jacobson	Eloise Metcalfe	James Ugobono
Wendy Jacobson	Liliana Monge	Maribel Valderrama
Cristina Jaime	Ann Mortimer	Emily Vicente
Lida Jennings	Veronica and Robert Navarro	Maria Victoria R. Cavarlez
Bret Jonas	Network For Good	Lori Von Kapff
Dave Jones	Diana and Baird Nielsen	Richard Wallace
Sam Joo	Pacific Life Foundation	Jake Weissberg
Elizabeth and Nicandro Juarez	Gamaliel Padilla	Richard J. Welch
Lisa Kanter	Nancy Perez	Thom Wise
Maureen Kennedy McCormick	Gloria and John Perrodin	Mathew Yohannan
Wendy Klein	Lupe and Ronald Pollak	
Elizabeth Knight	Ted Polychronis	
Ani Konialian		

## Join the Para Los Niños Futuro Family

Looking ahead to the next 40 years, we have established the Para Los Niños Futuro Family. This is a group composed of generous and forward-thinking donors who will support our long-term success through a planned gift. It’s easy to do, and donors of all varieties are welcome!

There are creative and flexible giving options that can benefit you and the future of PLN. Donating real estate, stocks, or other assets in lieu of regular payments naming Para Los Niños as the beneficiary of a life insurance policy, or gifting other liquid or non-liquid assets, can also offer generous tax benefits. Ensure the sustainability of our organization in a way that makes your core values known to others.

Consult with your financial advisor to discuss your options, and contact us at [futurofamily@paralosninos.org](mailto:futurofamily@paralosninos.org) to learn more. Your support of our mission will be long remembered and serve as an inspiration to others.

*\*Asterisk Indicates Board Affiliation*



# In-kind Donors

We are able to provide even more for our children, youth, and families thanks to the incredibly generous gifts of our donors in-kind.

Each new student receives a new backpack full of supplies, toys and books are available for children at distributions of food and cleaning supplies, warm clothing and coats are given to children in need, masks are offered at all sites for staff and families – all and more are made possible through the thoughtful gifts from those listed here, and the many who prefer to be anonymous. Thank you!

- Alexander Wang New York

Amazon Logistics

Arch Insurance Group Inc.

ASM Global

Assistance League of Los Angeles

Lorraine P. and Joe Berchtold

Blood, Sweat and Butter

Caruso Employees

The Cheese Store of Beverly Hills

Cotton On USA, Inc.

Calvin DeHesa

Cristina and Gilbert Dominguez

The Draycott

Susan and Scott Edelman

Everafter

Ella Fitzgerald Foundation

Fleur Marché

Mary Fontamillas-Rohrer

Ford Motor Company
- HomeState

human-I-T

JW Marriott Los Angeles L.A. LIVE

Judith and Donald Katz

Sarah Tuttle and Ben Kramer

Los Angeles Police Department

Marjorie and Steven Lewis

Los Angeles Chargers

Los Angeles Cold Storage Company

Los Angeles Dodgers Foundation

Los Angeles Football Club

The Los Angeles Kings

Lyft

Magic Castle

Malibu Beach Inn

Microsoft HOLA SoCal Employee Resource Group

Myrosa Enterprises

Necessaire Inc
- Netflix Employees

Olive & June

Pango Group

Paul Hastings Employees

Ana Ponce

PRP Wine International

Jennifer Janofsky Ralls

Rhino Records Employees

SOMOS La Familia LA Dodgers Employee Resource Group

South Bay Ford Lincoln

STAPLES Center

SurelyWell

Sarah Tuttle and Benjamin Kramer

Two Bit Circus

Vincenti Ristorante

Cindy and Jake Winebaum

Malin Wong and James Kissane

WSP USA Employee Resource Group

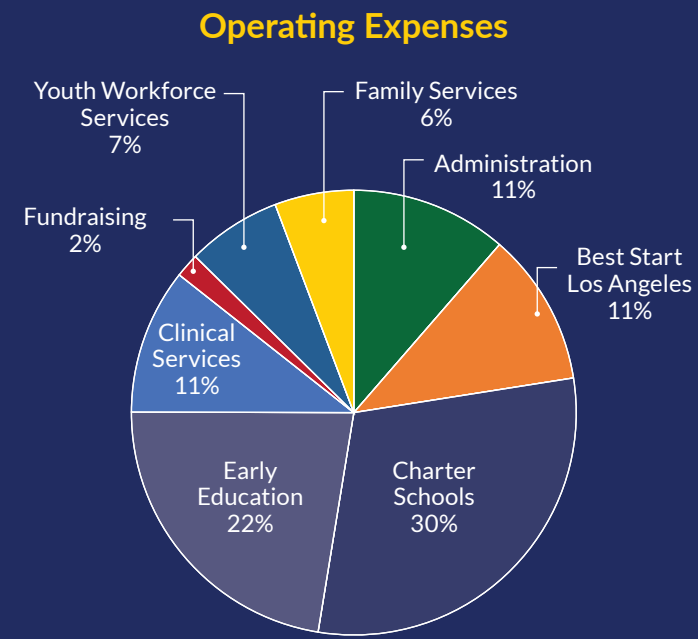
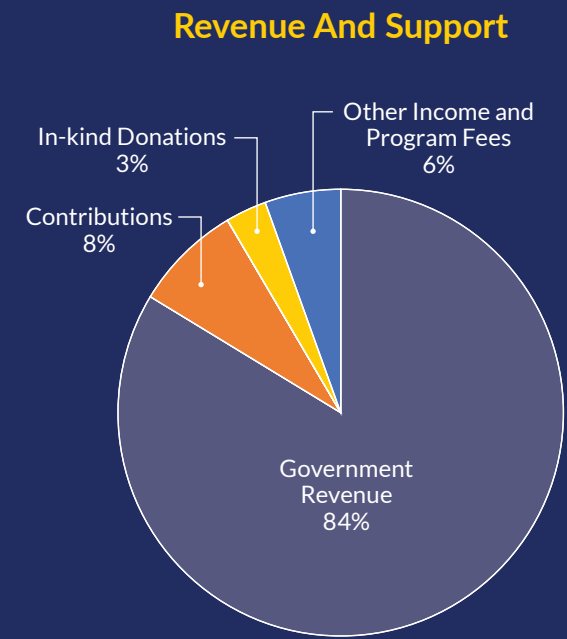


We hope we captured everyone who supported us this past year and if your name is inadvertently listed off, please email [info@paralosninos.org](mailto:info@paralosninos.org) so we can update the digital version of the Annual Report.





# 2020 - 2021 Financials



(In Whole Numbers)

Income	FY 20/21 Total
Government Revenue	40,142,441
Contributions	3,754,693
In-kind Donations	1,428,687
Other Income and Program Fees	2,644,324

Total Income	47,970,145
--------------	------------

Expenses	
Salaries	22,632,944
Payroll taxes and benefits	5,571,633
Occupancy	3,737,370
Interest expense	150,674
Subcontractors	909,821
Office Supplies	172,238
Program Supplies	451,230
Furniture & Equipment/Vehicles	1,074,404
Consultants/Professional Services	1,324,375
Participant Wages	1,506,257
Insurance	145,375
Food/Kitchen Supplies	657,829
Family Support Funds	2,565,279
Professional Development	449,442
Information Technology	968,562
LAUSD Oversight/Fair Share	237,735
Payroll Processing	214,549
Depreciation	320,305
In-kind Expense	1,428,687
Miscellaneous Expense	1,932,851

Total Expenses	46,451,560
----------------	------------

Net Income (Loss)	1,518,585
-------------------	-----------

UNAUDITED NUMBERS

# Janet's Story

Janet came to PLN three years ago when her daughter was just five months old. She needed help with child care so she could work and provide for her family. Janet loved that Mary Jane formed strong bonds with her teachers and that the school was so welcoming with resources for Janet as well.

When Janet became pregnant with her son, PLN was there for her when Roberto was born premature and had to have a number of surgeries. Teachers checked in daily on Janet and made sure that Mary Jane had materials at home to support her development and keep her learning, while mom had to care for Roberto 24/7.

In 2020, the pandemic closed the early education centers, but teachers and staff still found ways to keep the family on track: sending home toys, books, and ordering the special formula Roberto required.

There were times that Roberto and Janet were both in the hospital, and PLN would work with Janet to ensure Mary Jane could cope. She had become very emotional about her mom and about her brother's health, so PLN worked with Janet to provide books and handouts on managing her feelings. Furthermore, thanks to PLN's integrated model, they enrolled Mary Jane in therapy.

Now Roberto is back in the classroom and Janet has seen great strides in his development. "I was concerned with his eating, but the teachers have a rapport with him. I notice by the way they care for my kid. They have a way to make him feel comfortable, and he's now eating on his own."

Having grown up in the foster care system, Janet didn't have family or a network of support in her life. PLN became that family. "They are my village," Janet says of the teachers and staff. "I always feel comfortable asking for support. PLN really cares and goes the extra mile."

**"PLN really cares and goes the extra mile."**

*- Janet, PLN Mom*



**"Because PLN is such an intersectional organization where initiatives are layered and comprehensive, there's something for everyone. Once you're in, you don't want to leave because there are so many opportunities. Every year, including the past year, I see how we've grown our potential for true, lasting impact. There's no other organization like ours that does it all- schools, mental health and community services."**

*- Isabel Cueva, Director of Special Education at Para Los Niños Charter Schools*



# Board of Directors

<b>Marjorie Ehrich Lewis, Chair</b> <i>Retired Partner Gibson, Dunn &amp; Crutcher LLP</i>	<b>Rick J. Caruso (Emeritus)</b> <i>Chief Executive Officer Caruso Affiliated</i>	<b>Pedro J. Martí</b> <i>Managing Director, Private Wealth Advisor Rockefeller Capital Management</i>	<b>Gabriel Robles</b> <i>Managing Director First Republic Bank</i>
<b>Cathy Hession, Vice Chair</b> <i>President &amp; Executive Director The Carol and James Collins Foundation</i>	<b>Susan Edelman</b> <i>Retired Gibson, Dunn &amp; Crutcher LLP</i>	<b>Murray McQueen</b> <i>President Tribune Real Estate Holdings, LLC</i>	<b>Jose A. Tejada</b> <i>VP of Mortgage Lending Guaranteed Rate</i>
<b>Ronnie Roy, Secretary</b> <i>Partner DME Law LLP</i>	<b>Jim Gilio</b> <i>Partner Sloane, Offer, Weber, and Dern, LLP</i>	<b>Andrei Muresianu</b> <i>Vice President Capital World Investors</i>	<b>John Wasley</b> <i>Senior Managing Director and Head of U.S. Search Ferguson Partners</i>
<b>Sandra Aispuro</b> <i>VP Branch Manager City First Bank</i>	<b>Andrew Herreria</b> <i>Senior VP, Global HR CBS Studios</i>	<b>Mark Pan</b> <i>General Manager Cotton On USA, Inc</i>	<b>Cindy Winebaum</b> <i>Co-Chair Grant Screening Committee Women Helping Youth</i>
<b>Lorraine Prieto Berchtold</b> <i>Advisory Council Member Common Sense Media, Los Angeles</i>	<b>Benjamin Kramer</b> <i>C-Head, CAA Media Finance Creative Artists Agency</i>	<b>Walter F. Parkes</b> <i>Producer Parkes + MacDonald Productions</i>	<b>Malin Wong</b> <i>Director Guggenheim Partners Investment Management, LLC</i>
<b>Bill Burton</b> <i>President &amp; Founder Bryson Gillette</i>	<b>Josh Ludmir</b> <i>Associate Greenburg Traurig, LLP</i>	<b>Rebecca Rich</b> <i>Chief of Staff to the CEO Teach for All</i>	

# Executive Team

<b>Drew Furedi</b> <i>Ed.D., President &amp; Chief Executive Officer</i>	<b>Camille Gonzalez</b> <i>Chief Financial Officer</i>
<b>Deanette Brewer</b> <i>Vice President of Human Resources</i>	<b>Sam Joo</b> <i>Vice President of Student and Community Services</i>
<b>Angela Capone</b> <i>Ph.D., Vice President of Early Education</i>	<b>Dan Nieman</b> <i>Vice President of External Affairs</i>
<b>Sarah Figueroa-Freeman</b> <i>Ed.D., Vice President &amp; Chief Operating Officer</i>	



“I am thankful for Para Los Niños: a beacon of hope with a unified mission to support our most vulnerable children and their families. PLN’s work to uplift educational and comprehensive social-emotional services has helped to build strong communities, particularly during the COVID-19 pandemic. I look forward to our continued work together.”

- Los Angeles County Board of Supervisors Chair Hilda L. Solis,  
Supervisor to the First District

# Get involved

We can't do this work alone - it takes the partnership of dedicated staff and volunteers each year, and strategic investments, to empower our children, youth, and families to succeed. Please join us! Learn more at [paralosninos.org](https://paralosninos.org).

## One You Can Donate

Invest in the lives of over 10,000 children, youth, and families.

**Para Los Niños provides:**

**Education** to children as young as six-weeks old;

**Power** to families navigating stress, systematic oppression, and generational poverty, and;

**Strength** to communities organizing to build more vibrant, safe, and healthy neighborhoods.

## Two You Can Volunteer

Para Los Niños welcomes volunteers from corporations, community groups, colleges and schools. Help us support children and families by giving your time for a few hours, or on a regular basis – weekly or monthly.

Volunteers can help with mentoring, tutoring, college application assistance, athletics coaching, and administrative tasks.

## Three Join Our Team

We are always in search of dedicated, experienced professionals who value making a difference in the lives of children, youth and families.



“We are honored to support the mission of Para Los Niños and its community, as we believe in the power of education and opportunities to help all children realize their dreams. As a family, we prioritize giving back to our communities. This ensures greater equality and leads to advancement and success.”

- *The Baril Family, Para Los Niños volunteers, and long-time supporters*

# Para Los Niños Partners

For over forty years, Para Los Niños has built relationships with organizations, corporations, and fellow non-profits to enrich the lives of our PLN families, but also the greater Los Angeles community. Some of these partnerships are decades long, others are nascent, but together we believe in the potential of children, youth, and families, and together, we make Los Angeles a better place for all.

In 2020, these partnerships were more vital than ever to develop meaningful experiences for students, families, and volunteers. Throughout the year, virtual mentors and readers joined students, parties were held with shared activities on screen, and partners showed up in person to deliver needed supplies, books, and their time.

Albertsons	Cristina Dominguez	National Charity League
Amazon	The Ella Fitzgerald Foundation	Netflix
Arch Insurance	Friars Charitable Foundation	O'Melveny & Meyers
Brentwood School	FX / Nick Grad	Oracle
CAA / Ben Kramer	Gibson Dunn	Pango Group
Camp Harmony	Gray Space Inc / Jen Ralls	Paul Hastings
Cartoon Network / Warner Bros	Harvard Westlake	Rhino Records
Caruso	Hunton Williams	St. Paul the Apostle Elementary School
Cold Storage	KIECC Early Childhood Center	Team Provident / Hans Hagenmayer
Cooper Building	Los Angeles Kings	United Talent Agency
Cotton On	Los Angeles Police Department	Vedder Price
DCI Engineers	Loyola High School of Los Angeles	Whittier Woodworkers
Dodgers Latino Employee Resource Group	Microsoft HOLA Employee Group	WSP

“National Charity League, Los Angeles has partnered with Para Los Niños for nearly a decade, investing together in the success of our community. The NCL and PLN missions to promote opportunities for families go hand in hand. We are especially motivated by the meaningful, hands-on experiences our mother/daughter membership is offered by working with PLN—we grow just as much as the children and youth we serve.”

- *Suzanne Boone, Executive Director, National Charity League*





paRa loS niños  
for the childRen

5000 Hollywood Blvd.  
Los Angeles, CA 90027

[paralosninos.org](http://paralosninos.org)