



para los niños  
for the children



ANNUAL REPORT 2017

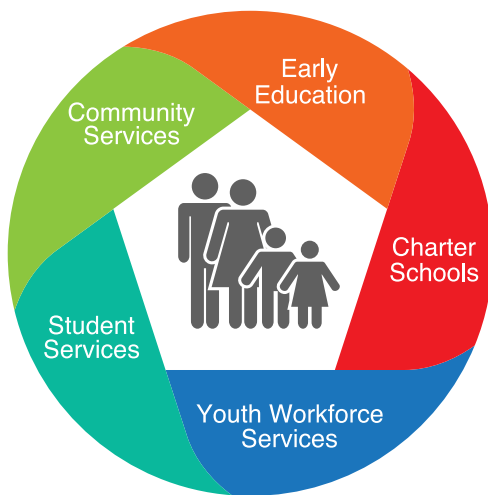




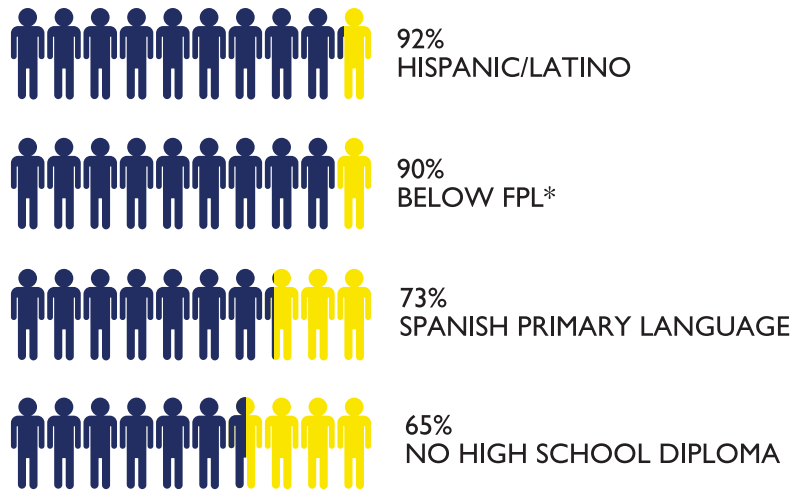
para los niños  
for the children

# AT A GLANCE

## THEORY OF ACTION



## WHO WE SERVE



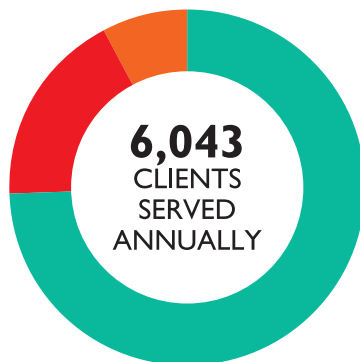
\* Federal Poverty Line (FPL) defined in 2016 as an annual income of \$23,283 for a family of four.

## CLIENTS SERVED

**4,510**  
STUDENT &  
COMMUNITY SERVICES  
CLIENTS

**1,073**  
CHARTER SCHOOLS  
STUDENTS

**460**  
EARLY EDUCATION  
STUDENTS



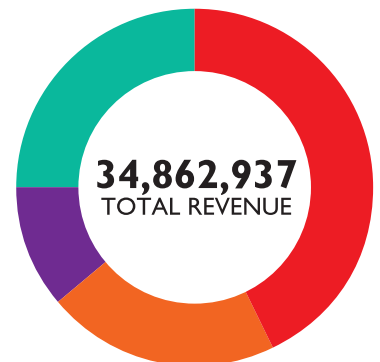
## REVENUE

**43%**  
CHARTER SCHOOLS

**21%**  
EARLY EDUCATION

**25%**  
STUDENT &  
COMMUNITY SERVICES  
CLIENTS

**11%**  
ADMINISTRATIVE &  
DEVELOPMENT



Cover: Opened in 2013, the Charter Middle School campus is a shared location with our dedicated partners in education, 9th Street Elementary (LAUSD).



Dear Members of the Para Los Niños Family,

As I reflect on my first year as the President & CEO of Para Los Niños, I realize how fortunate I am to work alongside an amazing team working in partnership with thousands of kids and families across Los Angeles. The tremendous impact on the lives of the children and families we serve is a testament to our culture of excellence, community-focus and compassionate approach.

Whether it be work with young adults, our rigorous academic programs, therapeutic school supports, the work we do with the very young (sometimes children just weeks old), parent training and support efforts, or the simply extraordinary work across the organization every day by our operations, facilities, finance and human resource teams – we all strive to make Para Los Niños the model of excellence in urban education with integrated, comprehensive family support services that create pathways to sustainable success in the communities we serve.

One highlight from this year was the Fiesta Para Los Niños Gala – a vibrant display of culture, commitment and success celebrating the 60,000 children and families we have impacted through almost four decades. This year's event was a spirited soiree in Downtown LA's Arts District, just blocks from our original location on 6th Street; punctuated by student performances, youth art on the walls, and student-created LA-landmark centerpieces—every bit of the evening was by the children and for the children.

But what that event—and every day—truly signifies is that in the midst of a challenging world around us, our kids and families are succeeding. Despite life's obstacles and challenges, and in a time when our kids and families might easily be ignored or forgotten by some, our youth are filled with promise and becoming the leaders of tomorrow. Our charter schools are on the rise, our early education program is growing stronger every day and we are expanding the reach of our programs serving young Angelenos— all while our school and community-based services are deepening in impact.

This is a testament to our model—we are an education organization that deeply believes in its integrated, comprehensive wrap-around service delivery as a path to success.

Thank you, on behalf of the Board of Directors, the entire Para Los Niños team and on behalf of the kids and families we work alongside, for your partnership, your support and your endless encouragement.

Drew Furedi  
President & CEO



Dear Members of the Para Los Niños Community,

What an exciting year this has been for Para Los Niños with Dr. Drew Furedi, our new President and Chief Executive Officer, at the helm. With his decades of experience as an educator, both in the classroom and in administration, and with his deep respect for and commitment to the community we serve, Drew has brought a unique perspective and drive to our mission. In his first year as the leader of our multifaceted organization, Drew has fostered a culture of compassionate service for our families. He has also empowered our nearly 400 employees across our early education, charter school and community services programs to work collaboratively to provide the most effective services to our children and families.

We have remained particularly attuned this year to the needs of the community we have served from the beginning—the underserved population in and around Downtown Los Angeles—and have focused on how we can best utilize our unique strengths and experience to support that community during this very challenging time. We are more persuaded than ever that our unique model—a strong educational foundation combined with compassionate social services—gives our children and families the best chance for success in life.

We are fortunate to have alumni, friends and supporters like you who share our convictions. This year marked the 36th anniversary of our organization—a milestone celebrating 60,000 families uplifted from the depths of poverty. Our Fiesta Para Los Niños Gala honored some amazing partners and friends including media network Univision Communications Inc. (Partner of the Year) and Netflix's *One Day at a Time* (Vanguard Award). The show's lead, Justina Machado, served as our dynamic emcee with L.A. Mayor's Office Chief of Staff, Ana Guerrero, delivering a powerful keynote address on the city's work and its positive impact on our youth, exemplified by our very own Youth Workforce Services graduate and now Para Los Niños employee, Nieves Rico, a key member of our Development Department.

For nearly four decades, Para Los Niños has had a profound impact on the City of Los Angeles, and has inspired a community of donors who support our mission and appreciate that, together, we can make a fundamental difference in the lives of our children and families, and provide a better tomorrow for future generations.

On behalf of the Board of Directors, we extend our sincere thanks for your continued support and passion for what we do.

Marjorie Ehrich Lewis  
Board Chair



# EARLY EDUCATION







The Para Los Niños Early Education program provides services to young children (ages six weeks through entry into kindergarten) and their families in six locations in the greater Los Angeles area. Our program is designed to promote optimal child development, foster critical thinking, spark curiosity, promote inquiry and heighten parental involvement. Our goal is to create early learning environments that enable children to develop the skills to be the best they can be now, throughout their school careers and in life.

Our work with the very young, and their families, continues to anchor our work and is the foundation for relationships with many of our families. The past year has seen a continued focus on building the capacity of our early education team, which is of particular importance despite operating in a time of limited public support for early education.

Our Head Start program participated in a Federal Review that focused on Teacher-Child Interactions—where Program Quality was assessed by Federal Reviewers using the CLASS measure (classroom learning assessment system)—and found our teachers performing at or above National Standards.

Three Head Start preschools (Hollywood, Perlita and Magnolia sites) received GrowingGreat curriculum—hands-on science, nutrition and literacy programming based on gardening and funded by Astellas USA Foundation. GrowingGreat, an organization that provides STEM experiences to inspire students to become scientists, engineers, farmers and chefs, partnered with us to help introduce our students to this level of education. Together, the program serves 1,400 inner-city young students, siblings and families in neighborhoods where the average household income is \$16,607. The partnership was kicked off with a dedication ceremony and opening of the Astellas STEM Garden. Festivities concluded with the students releasing dozens of ladybugs throughout the garden, which they learned will help keep their garden safe from the plant-eating bugs.

Today, we serve nearly 500 children from infancy through age five at our preschools, with 75-80% of the student body meeting or exceeding their developmental expectations.



A young girl with a red bow in her hair and a red polo shirt stands in front of a brick wall. She has a braid and is smiling. The text 'CHARTER SCHOOLS' is overlaid in large red letters on the right side of the image.

# CHARTER SCHOOLS

Our community charter schools aim to close the achievement gap for children, especially English Language Learners (ELLs), living in chronic poverty by providing: (1) High-quality education—project-based learning that fosters creative problem-solving and innovation while emphasizing literacy and language arts; (2) Resources and services for children and families at school sites—access to early intervention, mental health, and family support services; and (3) Parent engagement and skill building—leadership development for parents to support their children's academic achievement and build family strength.

The three Para Los Niños Charter Schools continue to build on past success to accelerate the trajectory of positive outcomes for our students. Thanks to stability in our school leadership, staff and especially our teachers, we are seeing gains in student attendance, internal assessments and statewide assessment results. The school network is buoyed by solid instructional leadership teams at each site, working in concert to support rigorous teaching and collaboration.

At Gratts Primary Center, which for many students is a first experience in school of any kind, our teachers and staff began connecting their data dialogues with parent surveys and input. That effort, coupled with the adoption of a new math program, lifted academic proficiency in mathematics for the 2016-17 school year. We have experienced a 20% growth in proficiency levels for students in the last two school years alone.

At Para Los Niños Charter Elementary School, we also adopted a new math program, deepened our data analysis—with a laser focus on our large population of English Learners—and continued to build our teaching faculty's expertise, both veteran and new. As a result, the school saw double-digit gains for students taking the state Math and English Language Arts assessments and a jump in our English Learner reclassification rate.



We also began supplementing our science and math curriculum for our upper grades with a new robotics/STEM program. As a result of our efforts to offer quality education programs, the Los Angeles Unified School District (LAUSD) extended the school's charter by an additional five years.

Our Charter Middle School experienced a year of change and growth made possible by curriculum tune-ups, including the incorporation of Achieve 3000, a digital methodology tracking student progress in reading, comprehension and application derived from complex text. The program was implemented to work across content areas and increase access to reading material at students' "just right level."

Our team also identified math gaps and began addressing them with the roll out of the IronBox Math Intervention program, providing grades 6-8 with diagnostics assessing fundamental mathematical skills and targeted skill development. We continued to see State Assessment gains that increase as students stay with Para Los Niños for successive years.

In addition, the campus saw its extra-curricular offerings jump with a strategic development of its Athletic Program and the Univision Media Center program, now in its second school year in operation. In 2018, the Charter Middle School's unrelenting commitment to STEM career preparation will reach astronomical heights when its student body will connect directly with astronauts in-flight in a special partnership between NASA and Univision.

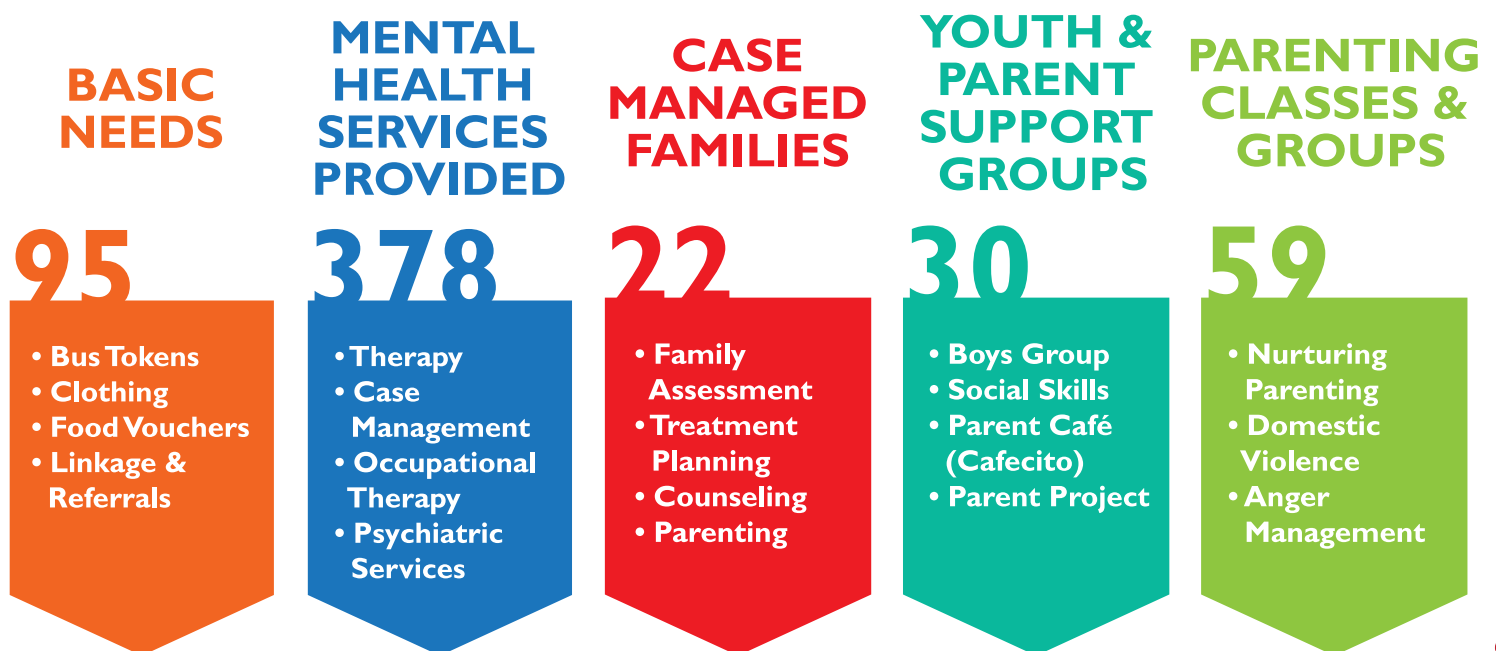
Our After School Program provided services to over 700 students, ranging from transitional kindergarten to grade eight. The programs focused on providing students with a safe and engaging enrichment environment, supporting cross-campus core instructional curriculum with activities that also reinforce and enhance academic achievement while incorporating parent engagement. The program boasts a near 100% in parent- student satisfaction rating of its daily program, overall program quality and learning & development benchmarks.





Our schools bring together supports and opportunities for children, youth, families, and communities to ensure physical, social, and emotional health to live and learn in safe and supportive environments.

Total Services Provided in our  
**CHARTER SCHOOLS** in 2016-2017: **584**





# ZERO TO FIVE SERVICES

Para Los Niños understands that the very foundation of our being is constructed during the first five years of childhood. The experience of the world, relationships, attachment, nutrition and education we receive during our 0-5 years are the developmental jumping off points that lead to confidence, identity, positive social relationships and future success in life. We also understand that especially during these years, one cannot support the child without also supporting the caregivers as they grow into their new roles.

To give children the best possible opportunities, we offer programs that connect to mothers in our community before going into labor. We walk with pregnant mothers through the changes, expectations, safety measures, emotional support, child development education, and concrete supports to bring a healthy child into the world and create a meaningful attachment with that child. We support young children's socio-emotional development through conjoint mental health services and occupational therapy, mothers through post-partum depression and anxiety, couples and caregivers through navigating the first five years of their child's life and appropriate developmental expectations, caregivers with age-appropriate community play and attachment opportunities, fathers with men's support groups, and domestic violence survivors with life giving community support.

Part of our Zero to Five programs includes our Nurturing Parent program, a resource providing young parents with the skills and tools needed for parenthood, which saw a whopping 50% of its participants improve their competencies in holding appropriate expectations for their children and establishing appropriate family roles in their homes. Many times abuse or neglect occurs because an adult does not understand a child's developmental needs and perceives a child's inability to perform as willful, deliberate disobedience. When caregivers gain greater understanding of what to expect of their children at different ages, empathy and patience increase and the likelihood of abuse goes down.

We work to create safe, nurturing, and healthy environments for all families and their small children within our communities, early education sites and primary grades with the goal of creating secure, healthy, curious and resilient children ready for school.

# SCHOOL AGE SERVICES

Our pedagogy is built on a foundation of strong children, families and communities. To that end, we offer access to mental health and other family supportive services at each school site, and those providers are members of the school community. In addition, parents support their children's learning by participating in a variety of activities, from governance to workshops on a range of issues including advocacy, English as a Second Language and parenting.

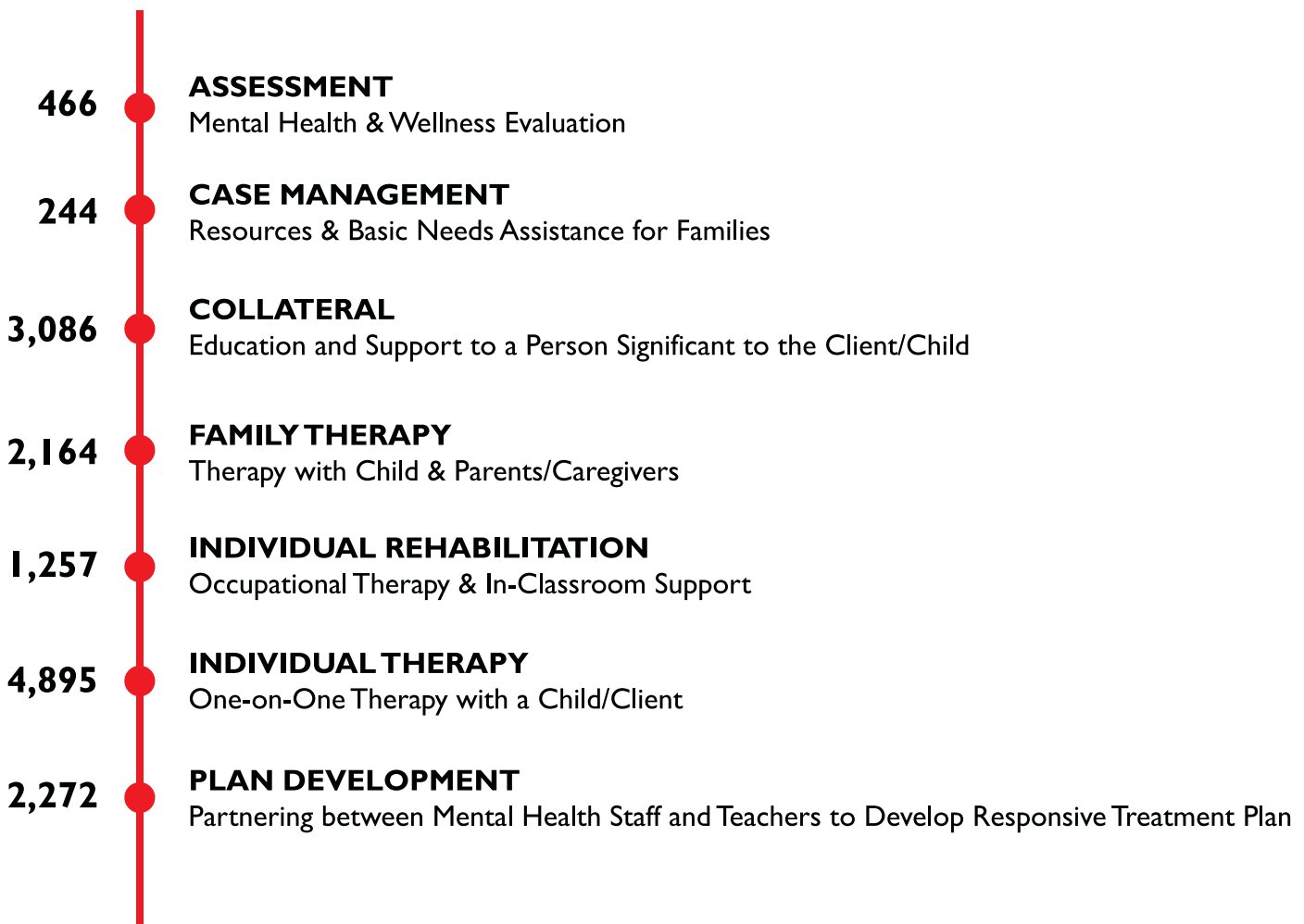
There were close to 15,000 mental health contacts made with Para Los Niños clients, for context, that totals just over 40 daily contacts—seven days a week. Contacts include individual and family therapy, assessing client needs, and developing responsive treatment plans for clients and their families. 62% of overall mental health clients come from our schools.

Given that mental health services for children and adolescents in the United States has been deemed a national public health crisis due to limited access to quality and affordable mental health services, the number of mental health contacts made with children and families is a powerful testament to our commitment to supporting children and their families.



According to the Center for Disease Control and Prevention, 1 in 5 children suffers from a mental health disorder and nearly 80% do not get the services they need. Here at Para Los Niños, we make that a priority.

Total Services Provided in 2016-2017: **14,384**







# YOUTH WORKFORCE SERVICES

Our Youth Workforce Services team recognizes that the best path to higher lifelong earnings is a quality education and consistent work experience. In partnership with the City of Los Angeles' Economic and Workforce Development Department and LAUSD, Para Los Niños reengages disconnected youth 16-24 back into school and the workforce in the Lincoln Heights area.

In recognition of its work with Northeast LA youth, the City recently doubled Para Los Niños' contract to include Westlake-MacArthur Park. The expansion is a multi-year, multi-million dollar investment offering a slated 2,200 students with integrated, comprehensive academic, workforce and post-secondary education preparation. This custom-fit approach includes paid and unpaid work experience, basic skills training, computer literacy, mentoring, career counseling, job placement, case management, assistance in meeting graduation and admission requirements, as well as applying for financial aid and scholarships.

## Spotlight:

- 100% of graduating high school seniors were accepted and will be attending college
- 98% of high school seniors graduated with their diploma on time
- 332 paid internships to young adults ages 14-24
- Over 11,860 hours of paid work experience
- 204 YWS students received a certificate or credential
- 91 students were enrolled in vocational training
- 71 students were enrolled in college full-time

**“It is life changing, I’m truly thankful to say that without this program I wouldn’t be where I am today.”**

**~Destiny Nguyen, YWS Graduate**

# SUCCESS

MANUEL NOVA

TRANSITION TO  
POST-SECONDARY  
EDUCATION

LEADERSHIP  
DEVELOPMENT

GUIDANCE & COUNSELING

ADULT  
MENTORING

OCCUPATIONAL SKILLS  
TRAINING

SUMMER  
EMPLOYMENT

LABOR &  
EMPLOYMENT  
INFORMATION

SECONDARY  
SCHOOL OFFERINGS

PAID & UNPAID  
WORK EXPERIENCE

ENTREPRENEURIAL  
SKILLS

TRANSPORTATION  
SERVICES

TUITION  
ASSISTANCE

TUTORING &  
STUDY SKILLS

CASE  
MANAGEMENT



# FAMILY & COMMUNITY SERVICES

Our Family and Community Services stretch throughout our three charter schools and into the communities that include Echo Park, East Hollywood, East LA, Rampart/Westlake, Skid Row, and Koreatown in the Metro Area and South LA.

Within our three Charter Schools we support our students and families with the support of the Family Advocates, who provide Nurturing Parenting classes, social skills classes, linkage to mental health services, resource support and in-home counseling to families that attend our schools.

The Family and Community Services programs are active and connected to a vast network of supports that exist to strengthen families and reduce the likelihood of child abuse and maltreatment through ongoing child and parental/caregiver supports, education, community building events, and community change and advocacy capacity building. In addition, Family and Community Services provides specific support to victims of domestic violence as they work through leaving all they have to escape violence, isolation, fear and trauma to re-engage with a new community, support their children, develop coping skills that will allow them to engage in positive social relationships, increase their confidence and self-worth, and finally, to actively join the workforce in ways that establish a career pathway.

Family and Community Services actively seeks to create safe, supportive, nurturing homes and communities in partnership with the families we serve and the community resources surrounding them.



# COMMUNITY TRANSFORMATION

**Veronica Corona** joined the Best Start Metro LA (BSMLA) program nearly three years ago. Extremely shy, hesitant and self-isolated, Veronica notified us she would be leaving the group within the week. With time and guidance from staff, Veronica began to feel comfortable sharing her opinions, taking on leadership roles and deepening investment in the program.

Soon after, the NLG (Neighborhood Leadership Group) elected Veronica as one of their core representatives to lead weekly planning agendas, facilitating meetings, and disseminating updates at other NLG meetings. Unfortunately, just when Veronica was coming in to her own, tragedy struck as she came down with a debilitating illness and was hospitalized in critical condition. Her fellow NLG members launched joint efforts to support Veronica by soliciting donations to support her medical bills and household expenses. The group visited and called Veronica daily to encourage a speedy recovery. Veronica was so surprised and thankful for the support that she couldn't wait to return to our program.

Once her health improved, Veronica decided to direct her focus and energy to our Communications Task Force (CTF) where she puts her artistic skills to work. Through CTF, she has become computer savvy and supports her team's marketing outreach. She even penned and directed a play, performed by her fellow NLG members, to promote the program's 'Pledge Towards a Culture of Respect' to help reduce community violence. Through her involvement in the CTF, Veronica has been interviewed by KPFK Radio, and manages a YouTube channel which features interviews with community members and local leaders.

Today, she credits Para Los Niños-BSMLA for her children's pride in her accomplishments and a polished determination to succeed.





# OPERATIONS

Para Los Niños continued to upgrade the supports provided to our programs by hiring a new Chief Operations Officer, Sarah Figueroa and a new Vice President of Human Resources, Deannette Brewer. With these moves, we took important steps in creating an organization better attuned to the needs of our team—our most important asset—while also strengthening the systems and operations (IT, safety, etc.) that support our work. We immediately saw an impact with a stronger retention rate, revamped recruitment and selection practices in addition to a 5% decrease in our Worker's Compensation premium (which brings claims down 25% in just two years).

In the wake of national tragedies, we elevated safety and updated our lockdown/shelter-in-place training across the organization; the Charter Elementary took it a step further and performed a full mock-drill of a disaster and executed it with flying colors. Next year we plan to launch our Crisis Response Team and Emergency Communication System for the entire network.

After the sale of the former administrative building, which increased cash reserves by 1200%, the Hollywood site became our Headquarters. It went through an extensive renovation to convert an open layout into offices and work spaces for the HR, Finance and Facilities teams. Construction of the new Administrative Offices at 7th Street were completed and the new space houses the President & CEO and administrative support teams.

# FINANCIALS

JULY 1, 2016 THROUGH JUNE 30, 2017 FISCAL YEAR

## REVENUE

Government contracts	\$28,664,367
Contributions and special events	2,119,019
In kind	1,231,773
Other income	2,847,778

## TOTAL REVENUE

**\$34,862,937**

## EXPENSES

Salaries and benefits	\$21,273,191
Occupancy	2,510,946
Subcontractors	1,036,435
Outside services	1,079,301
Supplies and meals	1,572,215
Family/Participant support	532,174
Information technology	317,990
In kind expenses	1,231,773
Other operating expenses	3,830,428

## TOTAL EXPENSES

**\$33,384,428**

## NET INCOME

**\$1,478,511**

## ASSETS

Cash	\$1,384,307
Grants and accounts receivable	4,911,755
Pledges receivable	667,605
Prepaid expenses and other assets	303,621
Split interest agreement	146,921
Investments	94,261
Property and equipment	11,478,900

## TOTAL ASSETS

**\$18,987,370**

## LIABILITIES AND NET ASSETS

### LIABILITIES

Accounts payable	\$1,228,928
Accrued liabilities	1,862,500
Line of credit	-
Notes payable	\$3,563,994

## TOTAL LIABILITIES

**\$6,655,422**

## NET ASSETS

**\$12,331,948**

## TOTAL LIABILITIES & NET ASSETS

**\$18,987,370**

# IN GRATITUDE TO OUR DONORS

## **\$250,000 and Above**

Caruso Family Foundation  
The Ahmanson Foundation  
The Ballmer Group Philanthropy  
Weingart Foundation

## **\$100,000 and Above**

Anonymous  
Annenberg Foundation  
Cedars-Sinai  
Ford Motor Company Fund

## **\$50,000 and Above**

Build-A-Bear Foundation  
Dan Murphy Foundation  
Dwight Stuart Youth Fund  
KROQ-FM  
The Atlas Family Foundation  
The Capital Group Companies  
Charitable Foundation  
The Carol and James Collins Foundation  
The Green Foundation  
Wells Fargo Foundation  
William H. Hurt Philanthropy  
Winebaum Family Foundation

## **\$25,000 and Above**

Anonymous  
Diane and Dorothy Brooks Foundation  
Herbalife International of America, Inc.  
Joseph Drown Foundation  
Marjorie E. and Steven Lewis  
The Mark Hughes Foundation  
The Walt Disney Company  
U.S. Bank Foundation  
UnidosUs  
United Way of Greater Los Angeles  
Walter J. and Holly O. Thomson Foundation  
Walter Parkes and Laurie MacDonald  
Charitable Foundation

## **\$15,000 and Above**

Anonymous  
Austin and Virginia Beutner  
Andrea and Blake Brown  
City National Bank  
Cathy and Ed Hession  
J. B. & Emily Van Nuys Charities  
Kaiser Foundation Hospitals  
Los Angeles Times Family Fund, a  
McCormick Foundation Fund  
Jamie Lynton  
Adria and Pedro J. Martí  
Morgan Lewis & Bockius, LLP  
Pfaffinger Foundation  
Andrea and Glenn Sonnenberg  
Bill Resnick and Michael J. Stubbs  
The California Endowment  
The David Geffen Foundation  
The Dutton Testamentary Trust  
The Eisner Foundation

The Ella Fitzgerald Charitable Fund  
The Louis L. Borick Foundation  
Walton Family Foundation

## **\$10,000 and Above**

Anonymous  
Avalon Bay Communities  
Fox Group  
Grifols Biologicals Inc.  
Growing Great  
William H. Hannon Foundation  
Lear Family Foundation  
Los Angeles Water & Power  
Employees Association  
Macy's  
O'Melveny & Myers  
Fredric and Beverly Reichel  
Riester  
Ronnie Roy and Rachel Fiset  
The Bank of America  
Charitable Foundation  
The Collins Family Trust  
The Louis and Harold Price  
Foundation, Inc.  
The Marilyn & Jeffrey  
Katzenberg Foundation  
The Ralphs/Food 4 Less Foundation  
Kathy and Charles P. Toppino  
Union Bank Foundation  
United Talent Agency  
Walmart  
Aviva Weiner  
WHH Foundation  
Ziffren Brittenham LLP

## **\$5,000 and Above**

Anonymous  
AEG  
American Business Bank  
Kenneth Ames, III  
Beauty Industry West  
Delray Lighting Inc.  
Jo and Victor DiCecco  
Eastdil Secured, LLC  
First Republic Bank  
Laura Fox and Bennett Van de Bunt  
Gisela Friedman  
Gibson, Dunn & Crutcher LLP  
Sarajane and Zac Guevara  
House of Bijan, Designer for Men  
Howard and Stephanie Sherwood  
Family Foundation  
Michael Karlin  
Donald and Judith Katz  
Lucille Ellis Simon Foundation  
Suzanne and Thomas John Masenga  
Andrei Muresianu  
Deena and Edward B. Nahmias  
Sharon Nazarian  
Robert Padnick  
Bill Panzera  
Rite Aid Foundation

Seyfarth Shaw LLP  
Karen Share  
Sony Pictures Television  
Stone Tapert Employee Benefits  
& Financial Services, LLC  
The Mary Jo & Dick Kovacevich  
Family Foundation  
The Sheri and Les Biller  
Family Foundation  
The TR Family Trust  
The Vons Foundation  
Time Warner Cable  
Univision Management Company  
Wells Fargo Foundation Educational  
Matching Gift Program  
Lillian Zacky

## **\$2,500 and Above**

Abraham Joshua Heschel Day School  
Jessica and Paul Allen  
Arent Fox LLP  
Capital Group  
CBRE  
Derrick Chevalier  
Del Amo Construction, Inc  
Mayola Delgado  
Patrick F. Durham  
Ruth Hannuschka  
Mark Hickey  
Nick Hutchinson  
KLM Foundation  
Lisa and Victor Kohn  
Melissa and Peter Lopez  
Roy and Barbara March  
National Charity League  
Paycom  
Ravi Rao  
Mike Royce  
Ruth & Sonny Singer Foundation  
Martine Singer  
The Aron Warner Fund  
The David and Evelyn Hou  
Chartitable Fund  
The Morrison & Foerster Foundation  
Toyota Motor Sales, USA, Inc.  
Univision KMEX-TV and  
TeleFutura KFTR-TV  
Diana and Robert Walker  
Wells Fargo Matching Gifts Program  
Michael Wunderman

## **\$1,000 and Above**

Leticia Acosta  
America's Best Local Charities  
Avison Young  
Antony Berbiglia  
Boeing Employee Individual  
Giving Program  
Janice Bradshaw and  
Christopher Kearley  
Brett Brewer  
Gloria Calderon-Kellett



# DONATIONS ARE FROM JANUARY 1, 2016 - JUNE 30, 2017

California Community Foundation  
Chris W. Caras, Jr.  
Martha and Tim Catlin  
Charles and Lynn Schusterman  
Family Foundation  
Coast Packing Company  
Coca-Cola North America  
Cotton On USA, Inc.  
Cyrano Group Inc.  
Eric Charles Haas and  
Chava Danielson  
John DeFazio  
Michael Dubin  
Rachel and Marc Ehrich  
Michael and Gail Feuer  
Friends of Eric Garcetti Officeholder  
Laura Fry and Scott Altman  
Drew Furedi and Naya Bloom  
Thomas Mone and Gloria Gerace  
Jim Gilio  
Kathryn Girard  
GKN Aerospace  
Camille Gonzalez  
Tanya and Michael Heldman  
R. Christine Hershey  
Amy Hollingsworth  
Irving Berlin Charitable Fund Inc.  
Kindel Gagan Public Affairs Advocacy  
The Law Offices of Young,  
Minney & Corr, LLP  
Gail Lees  
LMU School of Education  
Christina A. Lopez  
Los Angeles Flower Market  
Lucky Brand  
Becky Mann  
Manufacturers Bank  
Susan Markowitz  
Michael and Jan Meisel  
Ilana Meskin  
Brent Miller  
Janet and Patrick Moore  
Napeddy Investments LLC  
Judy Nelson  
Anna M. Nicola  
Marjorie Nielsen  
Allen Ono  
Eleanor R. and Glenn A. Padnick  
Mimi Paller and Ian Louis Gordon  
Pearson Education  
Phillip Sample  
Simone and Patrick Purcell  
Rob and Michele Reiner  
Richard Dunn Family Foundation  
Roy E. Crummer Foundation  
Deborshi Roy  
Linda and Miguel Sandoval  
SCS Equities LLC  
Lauren and Jeffrey Segal  
Michael Shustak  
Bob Smiland  
Southern California Committee  
of the National Museum of  
Women in the Arts

St. Paul the Apostle Catholic Community  
Susan Stanchfield  
Steven and Laura Mayer  
Family Foundation  
Sullivan Curtis Monroe Insurance  
Services, LLC  
Drs. Lisa and Mike Tan  
The Bains Family Foundation  
The Benevity Community Impact Fund  
The Bernstein Family Foundation, Inc.  
The Broder Foundation  
The Capital Group Companies  
Charitable Foundation in  
honor of Andrei Muresianu  
The Cheese Store of Beverly Hills  
The Good Chiropractor  
The Grave Maurice LLC  
The Kleiner Cohen Foundation  
Carrie and Peter Tilton  
Unified Nutrimeals  
Steven Wallace  
Pat L. Walter  
Michelle and Wellesley Wild  
Xerox Corporation

## **\$500 and Above**

Anonymous  
Anonymous  
Steven Alarcon  
Bonnie and Ronny Bensimon  
Benjamin Birdsall  
Elizabeth Cabral  
Carlos A. Galvan and Norma Silva  
Wendy Chang  
Andrew and Cheryl Charles  
Josh Cizek  
Corner Construction Co., Inc.  
Mary Dupart  
Michele Durose  
David Eads  
Scott and Susan Edelman  
Edison International Employee  
Contributions Campaign  
EdTec Inc.  
Excelligence Learning  
Corporation DBA Discount  
School Supply  
Sarah Figueroa  
Michael L. Galindo  
Enrique Garcia  
Alene and Robert Gelbard  
Joy and Javier Gonzalez  
Kevin B. Haddad  
Harrington Group  
Sebastian Jones  
David Kuhn  
L and J Foundation  
Dorothy Lee  
Betsy Lee-Myers  
Robert Leon  
Los Angeles Dodgers LLC  
Medispec Facility Service Inc  
Ryan Mendoza  
Moraya Moini

Christoffel Moller  
Allison Morgan  
Tiffany Daniel and Mike Murphy  
Mai Noonan  
Alvin and Amalia Ransom  
Richard and Susan Rivett  
Dylan Robertson  
Alice Rosenberg  
James Rothman  
Jon Pynoos and Elyse Salend  
Jose Sarabia  
Carol Savoie  
John and Toni Schulman  
Wesley Scruggs  
Shawn Carter Foundation  
Sheppard, Mullin, Richter & Hampton LLP  
Shuster Financial Group, LLC  
Suzanne Singer  
Alan Spiwak, Mr.  
Molly Stephens  
Melinda and Adrian Stern  
Katheryn and Lowell C. Steward  
Gene Straub  
Todd Sugimoto  
John and Donna Sussman  
Rebecca Tomasini  
United Way California Capital Region  
Vectis Strategies LLC  
Christopher J. Whiteside  
Wonderful Giving

## **\$250 and Above**

Anonymous  
5B Events  
Hugo A. Almeida  
Karla M. Alvarez  
Lucy Anguiano  
Celeste Anlauf  
Cecilia Ball  
Diane Ballen  
Carol Barraza  
Tracy Berglass  
Stuart Berton  
Emily Bonnett  
Fredrika Brillembourg  
Angela Capone  
Cristyn N Chadwick  
Charles and Jan Davis Charitable Fund  
Richard Conway  
Hannah Cox  
Oliver DelGado  
DirectEd  
Marion Edwards  
Marco Flores  
Friars Charitable Foundation  
Gordon Goldsmith  
Harvey B. Goldstein  
Mark Gordon  
Jean and Kurt Helm  
Ann and David Helpern  
Andrew Herod  
James Herr  
Deborah B. Herrera  
William Hochberg

Silicon Valley Community  
Foundation Edison  
International  
Mike Jackson  
Maximo Kelley  
Kroger  
Margaret Kubiak  
L.A. Metro Card Solutions  
Zachary Lainer  
Guy and Kendra Langer  
David Loh  
Los Angeles Cold  
Storage Company  
Douglas MacLellan  
Fred Manaster  
Brett Markel  
Dr. Rachel Marks  
Victoria Martinez  
Howard and Jane Matz  
Lisa M. and  
Alvin S. Michaelson  
Milken Community  
High School  
Marc Monroe  
Yvonne Morrow  
Omkar Nalamwar  
Victoria Nourafchan  
and David Rosenstein  
Office Depot  
Business Solutions  
Anthony Pacheco  
Mark Pecheck  
Walter Richardson  
Warren Riley  
Andrea Rodican  
Manuel Romero  
Bernard Rosenthal  
Neilson Ross  
Karen Roth  
Mary Roth  
Joseph Schwartz  
Dina Silver  
Harvinder and Surinder Singh  
& Paramjeet Kaur  
Michael and Patricia Smith  
St. Paul The Apostle School  
Stanley B. Gitlin An  
Accountancy Corporation  
Susan Sterling and  
Edward Myers  
Elizabeth Stone  
Kerianne Strickland  
James Turnbough  
Benjamin Kramer and  
Sarah Gibson Tuttle  
Ultimate Staffing Services  
Catalina Joos Vergara  
Meredith Voboril  
Thelma Waxman  
Jessica Weisblum  
Daniel P. Wingerning  
Henry Yampolsky

**\$100 and Above**  
Richard E. Aaron  
Santa G. Acuna  
Brenda Aguilera  
Kimberley Akhavan  
Susan Allison  
Teresa G. Amaya-Russell  
Carolyn and Gabriel Archer  
Fidel Argomaniz  
John Arnold  
Christine Atkinson  
Scott and Annie Austin  
Dirouhi Avedissian  
Rita Segree Baker  
Robert Ballard  
Mary Ellin Barrett  
Kim and Roselyn Batcheller  
Melinda Benedek  
Laurie Berger  
Alan N. Berro  
James Blakely  
Paul Blodgett  
Josh Bloom  
Lonna Bloom  
Deanette R. Brewer  
Broadway Federal Bank  
Barbara Brodie  
Michael Bustamante  
Steven Cahn  
Patricia Carlos  
Josie Marie Castillo  
Maria Victoria R. Cavarlez  
Barbara Chavez  
Claude Chene  
Glenn Cheshire  
Susan Choo  
Vicki Christianson  
Mirabai and John Chuldenko  
Billy Chun  
Linda Clair  
Jack Richard Cline, Jr  
Trenton Cohen  
Catherine H. Coleman  
Daniel Constant  
Peggy Cooper  
Linda M. Cowman  
Chris Coyle  
Steven C. Dalton  
Antonio and Kimberly D'Amico  
Stephanie Darrow  
Patrick de Decker  
Kathy De La Cerda  
Colleen DeLee  
Alma Derricks  
David and Victoria Diaz  
Eva Lorraine Diaz  
Paul Dowling  
Michele Dumont  
Elizabeth Dunn  
Kristi Durose  
Fernanda Eberstadt  
Scott Eisenberg  
Elizabeth and Hal Snyder  
Solmaz Emami  
P & K Investment  
Enterprises, Inc.  
LaMar Estrada  
Masha Fisch  
Rudolph E Flores  
Kathy Foley  
Anthony Garcia  
Julia and Andrew Gaskill

Andrea Gibson  
Jeffrey S. Glikman  
Tim Goldston  
Vance Grosser  
Clark Construction Group  
Maria H. Gutierrez  
Randy Hagan  
Sheila Harrison  
Evan Hayes  
Cecilia Hernandez  
Cherish Hollowed  
Greg Huebner  
Rosalia Ibarrola and  
Michael A. Egner  
Inland Empire United Way  
Robin and Gary Jacobs  
Melodie Johnson  
Elizabeth A. and  
Nicandro F. Juarez  
Katherine Kehr  
Judy Kuhn  
Adrian Kuzycz  
La Jamba LLC  
Ruben Lazo  
Jennifer Lee  
Tess Leopold  
L'Ermitage Foundation  
Ashley Lewis  
Cory Lewis  
Ellenand Sol Liebster  
Purple Madera  
Blythe and Christopher Maling  
Marilyn and Larry Leff  
Stephen and Melonka McCray  
Stewart McSherry  
Radimiro S. Medina  
Joe Mendez  
Norma Mirna Mendez  
Rebecca V. Mendoza  
Patrick Minnick  
Roxanne Modjallal  
Lawrence Moline  
Jorge V. Mora  
Richard and Cynthia Muller  
Misae Nakatani  
Veronica and Robert Navarro  
Marcia M. and Jon W. Newby  
Jessica Newman  
Baird and Diana Nielsen  
Eddi Ortiz  
Todd D. Osborn  
Madhuri Parikh  
Jamie Parry  
Ben Paul  
Robert Pechnick  
Rachel Perahia  
Tera Perez  
Tammy Perezchica-Pshebylo  
Tracey Perkins  
Josh Platt  
Gary Polson  
Ted M. Polychronis  
Suzanne Porter  
Premiere Events  
Linda Quintana-Reid  
Jennifer Janofsky Ralls  
Heleen Ramirez  
Franya Ramp  
Linda and Lawrence Rauch  
Susan Reiner  
Ellen Robin  
Gloriann and Jeffrey M. Rodgers

Arturo R. Rodriguez  
Diana Bertha Rodriguez  
Esteban Rodriguez  
Arci Rondon  
Carol Rosenthal  
Jody Rosenthal  
Allison and Neil Rotter  
Celeste Ruano  
Veronica Salazar  
Bruce Saltzer  
Ilissa Samplin  
Steven Schaeffer  
Ken & Karen Scott  
Audra Sielaff  
Bernard Silver  
Joshua Silverstein  
Patrick Sinclair  
Gretchen and Charles Sippial  
Wendelin Slusser  
Diane Sokolow  
Eric Spencer  
Suzanne and Marc Stein  
Melissa Stein  
John G. Stephens  
David Stern  
Donald Strasser  
Katherine Swett  
Riyoko Tanaka  
Yamileth Villanueva  
Diana Walters  
Charles Weinstock  
Diane Weiss  
David Whitehead  
Amy Wilentz  
Nancy Wilhite  
Larry Winningham  
Stephanie Younger  
Diane Ziering





**“We have a lot of people here we know we can trust—and that encourages us to do our best.”**

~Charter Elementary School  
4th Grade Student

## PARA LOS NIÑOS LEADERSHIP

### EXECUTIVE TEAM

DREW FUREDI, Ed.D.  
President & Chief Executive Officer

DEANETTE BREWER  
Vice President of Human Resources

ANGELA CAPONE, Ph.D.  
Vice President, Early Education

FRANCES ESPARZA, Ed.D.  
Vice President of Charter Schools  
& Superintendent

SARAH FIGUEROA  
Vice President &  
Chief Operating Officer

CAMILLE GONZALEZ  
Chief Financial Officer

ANDY HEROD  
Vice President, Student and  
Community Services

### SENIOR MANAGEMENT

SANTA ACUÑA, Ed.D.  
Elementary School Principal

BRENDA AGUILERA  
Director, Community Transformation

CELESTE ANLAUF  
Director, Donor Relations

SHARON BERG, Ph.D.  
Director, Zero to Five Services

CHRIS COYLE  
Interim Middle School  
Assistant Principal

OLIVER DELGADO  
Director, Communications & Marketing

HASSAN DORNAYI, Ed.D.  
Middle School Principal

CECILIA HERNANDEZ  
Director, Extended Learning

GABRIELA HERRERA  
Director, Compliance & Risk

STEPHEN MCCRAY, Ed.D.  
Director, Instructional Support

EDITH MEDINA  
Director, Human Resources

BLANCA MEDRANO  
Director, Procurement & Operations

JORGE OROZCO  
Director, Youth Workforce Services

JENNIFER RALLS, Ph.D.  
Director, Socio – Emotional Learning  
& Impact

JUAN C. RAMIREZ  
Primary Center Principal

GEOVANNI RIVAS  
Director, Information  
Technology

JUDI STADLER  
Director, School Age Services

JIMMY URIZAR  
Director, Family Services

YAMILETH VILLANUEVA  
Director, Foundation &  
Corporate Relations

### BOARD OF DIRECTORS

MARJORIE E. LEWIS, Chair  
Gibson, Dunn & Crutcher LLP  
(retired)

CATHLEEN C. HESSION, Vice Chair  
The Carol and James Collins  
Foundation

RONNIE ROY, Secretary  
DME Law LLP

RICK J. CARUSO\*  
Caruso Affiliated

SUSAN SCHEIBER EDELMAN  
Gibson, Dunn & Crutcher LLP  
(retired)

JIM GILIO  
Sloane, Offer, Weber, and Dern, LLP

BENJAMIN KRAMER  
Creative Artists Agency (CAA)

PEDRO J. MARTÍ  
Wells Fargo Advisors, LLC

THOMAS J. MASENGA  
Sheppard Mullin Ritcher & Hampton,  
LLP

MURRAY MCQUEEN  
Tribune Real Estate Holdings, LLC

ANDREI MURESIANU  
Capital World Investors

MARK PAN  
Cotton On USA, Inc.

WALTER PARKES  
Parkes+MacDonald Productions

GLENN SONNENBERG  
Latitude Management Real Estate  
Investors, Inc.

JOHN WASLEY  
Spencer Stuart

CINDY WINEBAUM  
Women Helping Youth

\*Emeritus

## EDUCATION ADVISORY COUNCIL

ABEER ALWAN, Ph.D.  
Electrical Engineering Department  
University of California, Los Angeles

ALISON BAILEY, Ph.D.  
Graduate School of Education &  
Information Studies  
University of California, Los Angeles

KAREN SYMMS GALLAGHER, Ph.D.  
Rossier School of Education  
University of Southern California

CLAUDE GOLDENBERG, Ph.D.  
School of Education  
Stanford University

CATHLEEN C. HESSION  
The Carol and James Collins Foundation

FELIZA LICON-ORTIZ, Ed.D.  
UnidosUS

WALTER F. PARKES  
Parkes+MacDonald Productions

LISA ROSENTHAL SCHAEFFER  
Consultant

KYO YAMASHIRO, Ph.D.  
Los Angeles Education Research Institute



### Para Los Niños

5000 Hollywood Blvd.  
Los Angeles, CA 90027

Tel: 213.250.4800 Fax: 213.250.4900  
[www.paralosninos.org](http://www.paralosninos.org)

*Helping children succeed since 1980*



PHOTOGRAPHY: Create and Capture Photography  
COVER PHOTO: Grant Gulesserian