



**PARA LOS NIÑOS LEADERSHIP**

**EXECUTIVE TEAM**

MARTINE SINGER  
*President & Chief Executive Officer*

ANGELA CAPONE, PhD  
*Vice President, Early Education*

JOSH CISZEK  
*Vice President & Chief Administrative Officer*

REGINALD GREENE  
*Interim Vice President, Charter Schools*

ANDY HEROD  
*Vice President, Student and Community Services*

KATHERYN STEWARD  
*Vice President & Chief Financial Officer*

**SENIOR MANAGEMENT**

BRENDA AGUILERA  
*Director, Best Start Metro LA*

AVERY BELL  
*Director, Corporate Relations*

SHERRY BERG, PhD  
*Director, Zero to Five Services*

YAMILETH GUEVARA  
*Director, Foundation Relations*

CECILIA HERNANDEZ  
*Director, Afterschool Services*

**EDUCATION ADVISORY COUNCIL**

ABEER ALWAN, PhD  
*Electrical Engineering Department  
University of California, Los Angeles*

ALISON BAILEY, PhD  
*Graduate School of Education & Information Studies  
University of California, Los Angeles*

KAREN SYMMS GALLAGHER, PhD  
*Rossier School of Education  
University of Southern California*

CLAUDE GOLDENBERG, PhD  
*School of Education  
Stanford University*

CATHLEEN C. HESSION  
*The Carol and James  
Collins Foundation*

EDITH MEDINA  
*Director, Human Resources*

BLANCA MEDRANO  
*Director, Procurement & Operations*

MYNOR MONTIEL  
*Principal, Charter Elementary School*

SHEENA NAHM, PhD  
*Director, Senders*

JORGE OROZCO  
*Director, Youth Workforce Services*

JENNIFER RALLS, PhD  
*Director, Outcomes & Community Impact*

GEOVANNI RIVAS  
*Director, Information Technology*

MARIANA ROBLES, PhD  
*Principal, Para Los Niños – Gratts Primary Center*

JUDI STADLER  
*Director, School Age Services*

DAVID TANAKA  
*Director, Facilities Services*

KIMBERLEE WOODS, EdD  
*Principal, Charter Middle School*

LILY YEE  
*Director, Finance & Contract Compliance*

FELIZA LICON-ORTIZ, EdD  
*National Council of La Raza*

WALTER F. PARKES  
*Parkes+MacDonald Productions*

ROBERT RUEDA, PhD  
*Rossier School of Education  
University of Southern California*

LISA ROSENTHAL SCHAEFFER  
*Consultant*

KYO YAMASHIRO, PhD  
*Los Angeles Education  
Research Institute*

**BOARD OF DIRECTORS**

MARJORIE E. LEWIS, *Chair*  
Gibson, Dunn & Crutcher LLP

TOM MASENGA, *Vice Chair*  
Seyfarth Shaw LLP

PETER LOPEZ, *Secretary*  
Granite Investment Partners, LLC

STEVE BARR  
California Democrats for Education Reform

RICK J. CARUSO\*  
Caruso Affiliated

ZAC GUEVARA\*  
Capital International Research (retired)

CATHLEEN C. HESSION  
The Carol and James Collins Foundation

MARK HICKEY  
Capital International Research

PEDRO J. MARTÍ  
Wells Fargo

ANDREI MURESIANU  
Capital World Investors

ED NAHMIAS  
Capital Research Company (retired)

MARK PAN  
Cotton On USA, Inc.

WALTER F. PARKES  
Parkes+MacDonald Productions

RONNIE ROY  
Richardson Patel, LLP

GLENN A. SONNENBERG  
Latitude Management  
Real Estate Investors, Inc.

GENE STRAUB  
Granada Hills Charter High School

CATALINA JOOS VERGARA  
O'Melveny & Myers LLP

\*Emeritus

PARA LOS NIÑOS  
**annual report 2013-2014**



500 LUCAS AVENUE  
LOS ANGELES, CA 90017  
(213) 250-4800  
PARALOSNIÑOS.ORG



ON OUR COVER:  
Nieves Rico and her  
two-year old son Eli.

### Nieves' story:

Eighteen, pregnant, and scared. That was me before I discovered Para Los Niños.

After graduating high school I found out that I was pregnant and had to move out of my mother's house. I lived with relatives but worried about a permanent home and how I would support myself. A friend suggested Para Los Niños; thanks to PLN's Youth Workforce Services in East LA, I enrolled in a program to become a medical assistant. I gave birth to my son Eli prematurely in January 2012, and earned my certificate from the East Los Angeles Skills Center in February.

My PLN career advisor set me up with a number of interviews, but landing a job in the medical field would be very challenging because I didn't have a car and I needed child care for Eli. Luckily, PLN's development department had an opening and they helped me enroll my son at the Tina and Rick J. Caruso Early Education Center so that I could accept the job.

I worried that Eli, as a preemie, might fall behind the other children, but he has flourished because of loving and supportive teachers. They noticed he was not speaking as much as he should and was often pulling on his ears. It turned out his hearing was almost completely blocked, but that was corrected with minor surgery. Now he's more than caught up – he's exceeded everyone's expectations!

Being a part of the development team inspired me to continue my education at a four-year college and to pursue my professional goals so I can be a role model for my son. Para Los Niños has given me the opportunity to escape the cycle of being a teen mother in poverty and create a better life for Eli and me.



### Dear friends,

On behalf of the children and families we serve, we would like to thank the Para Los Niños family: individual donors, private and government funders, partner agencies, volunteers, elected officials and exceptional staff. Together we represent the continuum of care for our children and families. Para Los Niños simply couldn't do this work alone.

Poverty creates barriers to learning that must be addressed to close the achievement gap for children living in poverty. Our students can't excel if they're sick or hungry or homeless. Our partnership with you brings critical resources, such as school supplies, health and dental care, housing and job opportunities to our families, schools and communities.

Communities thrive on a foundation of trusting relationships. That's why this year we're paying special tribute to the extraordinary staff of Para Los Niños – those who build relationships with our children and families and go above and beyond every day to change lives. All the resources in the world can't interrupt the cycle of poverty without caring and consistent professionals who form the bridge from crisis to solution.

Our staff are here *for the children*, whether they work in classrooms, playgrounds or administrative offices. Their dedication comes in many forms: a multi-disciplinary team working together to support a critically ill student and his family, or a facilities team repairing a playground over the weekend so toddlers won't miss a day of outdoor play.

This annual report features portraits of a few staff members. As you read, remember there are many more dedicated professionals who embody the Para Los Niños culture of excellence and compassion.

Thank you for believing in the power of relationships to build strong communities and excellent schools. We're honored to work with you on behalf of the 7,500 children we serve each year.

With our gratitude and fond wishes,

MARJORIE E. LEWIS, *Board Chair*

MARTINE SINGER, *President & CEO*

## EDUCATION IS THE PATH OUT OF POVERTY.

**Para Los Niños paves the way.**



Para Los Niños relentlessly supports children and families so learning never stops.

We run great schools and also pay attention to life outside the classroom. Every child and family enrolled in a Para Los Niños charter school, preschool or program is screened for issues that might interfere with learning. Does the family have medical and dental care? Adequate food and housing? Does the child have developmental delays? How is the caregiver's mental health? Is the family socially isolated?

Para Los Niños staff members recognize the tangled relationship between learning and poverty, and they continuously support student achievement through innovation

**On the following pages you'll see examples of programs and partnerships that ensure children come to school safe, healthy, resilient, supported and ready to learn each day.**

# safe

**Children can recover from trauma**

Children living in chronic poverty are

**22x**

more likely to be abused.

**95%**

of parents who complete Nurturing Parenting develop skills that promote healthy development, secure attachment, and age-appropriate learning.



Children who experience neglect, abuse or severe stress feel profoundly unsafe. Their emotions overwhelm them, and they may have trouble sleeping or paying attention in school. Trauma can interfere with healthy brain development. Fortunately, research shows that connections with caring adults — teachers and caregivers — help children get back on track to succeed in school and in life.

## **NURTURING PARENTING**

That's why we launched Nurturing Parenting, a program for families with children from birth to 3 years old who attend Para Los Niños preschools. Over the course of 12 weeks, parents learn alongside their children's teachers about empathy; non-abusive discipline; and child abuse and trauma prevention. Our sincere thanks go to the Tikun Olam Foundation, the Jewish Community Foundation of Los Angeles and The Boeing Company, who underwrite this evidence-based program.

## **ADELINE FERNANDEZ**

"I work at Para Los Niños to create success for families. We can break the cycle of abuse — I've seen countless examples. Sometimes it's as simple as teaching parents what to expect from a young child: a four-year old can't be expected to perform household chores every day. One mother admitted she hit her son for not taking out the trash — a decision she regretted yet one she feared might happen again unless she learned about parenting and non-violent discipline. Through Nurturing Parenting, she understood age-appropriate expectations, and how to value what her son did well. Witnessing true change in children and families is what keeps me here."



# healthy

Children can focus on learning

95%

of first graders in California who need glasses don't have them.



100%

of PLN's Charter Elementary School students had vision screenings and

20%

of those children needed glasses and received them.



Toothaches, along with untreated asthma and other medical issues, keep children away from school, sometimes for days. Even the best teacher may have trouble engaging a child who is ill or struggles to see the board.

### VISION TO LEARN

Poor vision affects school performance, classroom behavior and self-esteem. Fortunately, Para Los Niños solved this problem for its 400 elementary school students by partnering with Vision To Learn, who brought the clinic to school and gave eye exams and glasses free of charge.

# resilient

Children can thrive despite adversity

1/2

of all cases of diagnosable mental illnesses begin by age 14.

As many as  
**1 in 5**

children experience a mental disorder

100%

of Para Los Niños students are screened each year for mental health and other concerns



Resiliency is essential to emotional well being and preventing mental illness, and can be nurtured and supported by caring adults.

### PARENT-CHILD INTERACTION THERAPY

Para Los Niños offers Parent-Child Interaction Therapy (PCIT), an evidence-based treatment for young children with serious behavioral challenges. PCIT improves parent-child relationships through real-time coaching: the therapist observes the parent and child interacting via a one-way mirror and offers guidance through an audio transmitter in the parent's ear. Parents learn to manage their child's behavior at home, promote better behavior at school, and develop positive relationships.

*"I was on speed dial at school," said Cecilia of the frequent calls she received about Joseph, one of two grandsons she is raising. "He was hitting kids, destroying the classroom, tearing the ABCs off the wall, just terrorizing the building."*

*Cecilia and Joseph enrolled in PCIT. "I finally felt that someone had my back," she said of the support she received from her therapist/coach. After three months in the program, "Joseph is like a different child: sitting still, going up a level in reading, trusted by teachers to help out in class." As for Cecilia? "Finally, we can have a normal home life."*





## DINORA ARTEAGA

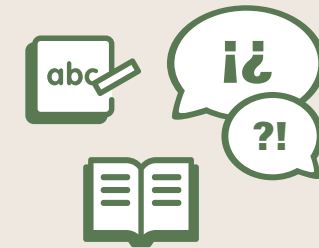
“I’ve been the school librarian at the Para Los Niños — Gratts Primary Center since its founding in 2010. I enjoy storytelling and creating a love of reading with my K-1 students. Family Literacy Intervention opens up a world of books to students and their families, which leads them to increase their literacy-related activities at home.”

# supported

**Involved parents are key to student success**

95%

of students in the Family Literacy Intervention Program improved one or more reading level



Many Latino parents do not get involved in their child’s schooling because of language barriers or lack of confidence. When parents are involved in school, kids do better in school, behave better in the classroom and attend school more frequently.

### FAMILY LITERACY INTERVENTION

If a child at the Primary Center is reading below grade level, the whole family gets involved. The bilingual school librarian runs the Family Literacy Intervention Program, meeting with parents one-on-one and in groups over 8 weeks. Parents and children learn how to read together, make predictions based on titles or pictures, and check out books from the public library. Regardless of their own reading level, parents learn they can have a positive influence on their child’s learning.

# learning

**Arts integration creates engaged and high-achieving students**

**72%**

of business leaders say that creativity is the number one skill they seek when hiring

**100%**

of 4-year olds in a weekly music program improved in language acquisition, listening, taking turns, following instructions and demonstrating confidence.



We value the strengths that children bring – their cultures and traditions, their unique learning styles and their wildest dreams. Though students learning English may struggle to articulate their knowledge of academic content, drawing, sculpture and music allow them to show they understand. Integrating the arts supports critical thinking and encourages risk-taking for all students. It also improves reading and math scores, as well as motivation, concentration, confidence and teamwork.

## **ARTIST-IN-RESIDENCE PROGRAM**

Thanks to a multi-year grant from The DreamWorks Animation Charitable Foundation, artist-in-residence Malcolm Wray trained classroom teachers on integrating the arts into lesson plans that align to Common Core standards in multiple subjects. Students trace their observations and interpretations throughout the year; each spring, they collaborate on large-scale paintings, three-dimensional masks, models and sculptures to celebrate their learning and accomplishments.

## **PARKES FAMILY MUSIC PROGRAM**

Research demonstrates links between music training, enhanced brain functioning and heightened language skills in economically disadvantaged children. In partnership with the Young Musicians Foundation Teaching Artist Music Program (YMF), 100 children pre-K through 8th grade study violin, cello, flute, keyboards, guitar, percussion, trumpet, clarinet and voice. The program is made possible by the Walter Parkes and Laurie MacDonald Charitable Foundation, The Ella Fitzgerald Charitable Foundation and other generous donors.



## **CLAUDIA CASTORENA**

“The visual arts allow students to express what they’re learning, build language skills and get the confidence they need to succeed in school and beyond. Making art helps develop fine motor skills in younger students. Art also can help teachers assess students’ comprehension. Since I began teaching at PLN in 2001 I’ve seen students extraordinarily engaged in the learning process through art.”

## **CINDY GONZALEZ**

“Over the past ten years I’ve taught 2nd, 3rd and 4th grade at the Para Los Niños Charter Elementary School. My focus has been on teaching 21st century learning skills through the visual and performing arts. It’s not about making decorative, pretty pictures – though our students produce beautiful work! It’s about bridging culture and language, and creating social bonds with others.”





# PROGRAMS & SERVICES

Para Los Niños is closing the opportunity gap for children in distressed communities by integrating high quality education with wraparound services for children and their families.

Within our school communities we offer mental health and other family support; in addition, we help parents support their children's learning through participation in school governance, peer groups and workshops on a range of issues. In total Para Los Niños serves 7,500 children, youth and their families throughout Los Angeles each year.



## Early Education & Head Start

The five years of life are the foundation for success in kindergarten and beyond. We serve 1,000 children, ages six weeks to five years old, at 10 early education centers, including four Head Start sites. Para Los Niños teachers create early learning environments that spark curiosity, promote inquiry and foster critical thinking, as well as heighten parental involvement.

## Charter Schools & Afterschool

Our three independent charter schools in downtown LA serve 1,000 students K-8. Building on children's innate strengths, experiences and resilience, we create safe spaces that prepare our students to be critical thinkers, innovators and active participants in their community.

Our after-school program offers academic and social enrichment, tutoring and a safe space for children to spend their afternoon hours while their parents are working.

## Student & Community Services

Student Services support children (Zero to Five and School Age) enrolled in PLN schools and their families. Supports include evidence-based and trauma-informed mental health services, case management and parenting workshops.

Community Services focus on reducing child abuse and strengthening families and neighborhoods in central and south Los Angeles

To reduce child abuse and neglect, we help more than 5,000 families annually, through Family Preservation, Partnerships for Families, and CAPIT (Child Abuse Prevention, Intervention and Treatment). These programs that provide in-home counseling, case management, food and housing aid, clothing and utility assistance, and classes on parenting, advocacy, and domestic violence.

To strengthen families and neighborhoods, we help community members transform their

neighborhoods into places of opportunity where children can be healthy and safe. Best Start Metro LA (BSMLA) focuses on improving the lives of young children and their families in Pico-Union, Koreatown, USC North and South Park. BSMLA empowers parents as community leaders to build safe and healthy neighborhoods and, through partnerships and parent-sponsored activities, strengthen the protective factors associated with improved child outcomes.

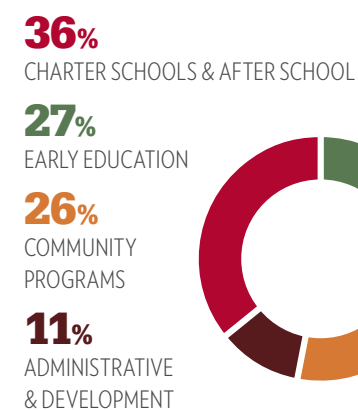
Senderos (Pathways) is a community engagement program that develops parents as leaders in three arenas. At PLN schools, parent leaders collaborate with school staff and community members to create change in their schools and neighborhoods.

Para Los Niños promotoras and parent leaders provide nutrition and wellness education and resources to families with children under five in communities with high childhood obesity rates, including Downtown LA/Skid Row, Westlake, Koreatown, Chinatown, McArthur Park, and Temple Beaudry. As facilitators of Parent Support Circles, parents with children under five reach out to other parents in their communities to create peer support groups in South LA, Baldwin Hills, Inglewood, Lennox, Hawthorne, Gardena, Compton and Lynwood.

## Youth Workforce Services

Through its YouthSource Center in East LA, Para Los Niños prepares 1,000 young people annually, ages 14 to 21, for success in completing their education and joining the workforce. Our dropout recovery services help students receive their GED, high school diploma, vocational certification or enroll in college. We also offer career counseling, job placement, mentoring, case management and leadership development, placing hundreds of young people each year in paid internships throughout Los Angeles.

## Where your investment goes



**\$225,000**  
IN RESERVES



**7,500**  
CHILDREN AND FAMILIES  
SERVED ANNUALLY



**1,000**  
CHARTER SCHOOL  
STUDENTS



**1,000**  
PRESCHOOL STUDENTS

**95%**

PLN STUDENTS WHO QUALIFY  
FOR FREE OR REDUCED LUNCH



## INCOME STATEMENT

FISCAL YEAR ENDING  
JUNE 30, 2014

### REVENUE

Government Contracts	\$ 21,237,864
Contributions & Special Events	2,165,706
Other Income	303,838

### TOTAL REVENUE

**\$ 23,757,195**

### EXPENSES

Salaries & Benefits	\$ 14,537,215
Occupancy	3,114,389
Subcontractors	1,065,971
Outside Services	1,139,689
Supplies & Meals	1,429,943
Family / Participant Support	683,992
Information Technology	660,205
Other Operating Expenses	1,023,874

### TOTAL EXPENSES

**\$ 23,655,278**

### NET INCOME

**\$ 101,917**

## BALANCE SHEET

JUNE 30, 2014

### ASSETS

Cash	\$ 1,566,929
Receivables	4,186,511
Property & Equipment	15,804,667
Other Assets	264,054

### TOTAL ASSETS

**\$ 21,846,152**

### LIABILITIES

Accounts Payable	\$ 1,414,897
Accrued Liabilities	1,680,056
Lines of Credit	500,000
Notes Payable	6,680,845

### TOTAL LIABILITIES

**10,275,798**

Net Assets

**11,570,354**

### TOTAL LIABILITIES & NET ASSETS

**\$ 21,846,152**

**in gratitude  
to our donors**

DONATIONS ARE  
FROM JULY 1, 2013 –  
JUNE 30, 2014

**\$250,000 AND ABOVE**  
Tina and Rick J. Caruso

**\$100,000 AND ABOVE**  
Ford Motor Company Fund  
The Eisner Foundation

**\$50,000 AND ABOVE**  
Anonymous  
Annenberg Foundation  
California Community Foundation  
DræamWorks Animation  
Charitable Foundation, Inc.  
Joseph Drown Foundation  
The Angell Foundation  
The Capital Group Companies  
Charitable Foundation  
Thomas and Dorothy Leavey Foundation  
Tikun Olam Foundation  
Walter Parkes and Laurie MacDonald  
Charitable Foundation  
WHH Philanthropy

**\$25,000 AND ABOVE**  
Cedars-Sinai  
Dwight Stuart Youth Fund  
KROQ-FM  
Los Angeles Times Family Fund,  
A McCormick Foundation Fund  
Deena and Edward B. Nahmias  
The Ralphs/Food 4 Less Foundation  
Target  
The Mark Hughes Foundation  
Walter J. and Holly O. Thomson Foundation  
Weingart Foundation  
Wells Fargo

**\$15,000 AND ABOVE**  
Anonymous  
J. B. and Emily Van Nuys Charities  
Jewish Community Foundation of Los Angeles  
Los Angeles Fund for Social Justice  
Pfaffinger Foundation  
The California Endowment  
The Carol and James Collins Foundation



**\$10,000 AND ABOVE**  
Anonymous (3)  
Cecil C. Dutton Trust  
Diane and Dorothy Brooks Foundation  
Neda and Tim Disney  
Donald T. Sterling Charitable Foundation  
L.A. Kings  
Melissa and Peter Lopez  
Macy's Foundation  
Thomas John Masenga  
Paul S. Norris  
O'Melveny & Myers  
Jill and Mark Pan  
Peace Love and Happiness Foundation  
Michele and Rob Reiner  
Andrea and Glenn Sonnenberg  
Time Warner Cable  
U.S. Bancorp  
William H. Hannon Foundation

**\$5,000 AND ABOVE**  
Anonymous  
AEG  
American Business Bank  
Andrea and Blake Brown  
Carl W. Johnson Foundation  
Delray Lighting Inc.  
Environmental Contracting Corporation  
Gibson, Dunn & Crutcher LLP  
Mark Hickey  
Arianna Huffington  
Councilmember Tom Labonge  
Laemle Theatres Charitable Foundation  
Marjorie E. Lewis  
Local Independent Charities of America  
Lucille Ellis Simon Foundation  
Nestlé USA  
Occidental Petroleum Corporation  
Mimi Paller and Ian Louis Gordon  
Nora E. Paller  
Joseph L. and Bonnie T. Paller  
Bill Panzera/Panzera Insurance Agency, Inc.  
Seyfarth Shaw LLP  
Howard and Stephanie Sherwood  
Family Foundation  
Sidney Stern Memorial Trust

Southern California Development Forum  
Southern California Edison  
The Clorox Company  
The Louis and Harold Price Foundation, Inc.  
The Vons Foundation  
Toyota Motor Sales, USA, Inc.  
Wells Fargo Foundation  
Educational Matching Gift Program  
Lillian Zacky

**\$2,500 AND ABOVE**  
Anonymous  
ABC Studios  
Brookfield Office Properties  
Patrick F. Durham  
Heffernan Foundation  
Tanya and Michael Heldman  
KLM Foundation  
Lisa and Victor Kohn  
Korea Trade Investment Promotion Agency  
Los Angeles Water &  
Power Employees Association  
Pedro J. Martí  
Andrei Muresianu  
Purcell Family Charitable Fund  
Karen and Jose Sarabia  
United Way California Capital Region

**\$1,000 AND ABOVE**  
Anonymous  
Eric Andersen  
Keith Black and Carol Bennett  
Bonnie and Ronny Bensimon  
The Bernstein Family Foundation, Inc.  
Margaret Bernstein  
Martha and Tim Catlin  
Jack Richard Cline, Jr  
Deloitte & Touche  
Jo and Victor DiCecco  
Disney Worldwide Services  
Gloria G. Gerace  
GKL, Inc.  
GKN Aerospace  
R. Christine Hershey  
Cathy and Ed Hession  
Sue L. Himmelrich and Michael E. Soloff  
Lewis Clay Horne  
Irving Berlin Charitable Fund Inc.  
Judith and Donald Katz  
L and J Foundation  
Sherry Lansing  
The David Lederer Family  
Logistic Parking, Inc.  
Christina A. Lopez  
Los Angeles Flower Market  
Prem Manjooran  
Laura and Steve Mayer  
Lisa M. and Alvin S. Michaelson  
Anna M. Nicola  
Eleanor and Glenn Padnick  
Roll Giving & Paramount Community Giving  
Roy E. Crummer Foundation  
Linda and Miguel Sandoval  
Sandra and James Shoaff  
Martine Singer  
Linda and Robert Sparr  
Stone Tapert Employee Benefits &  
Financial Services  
John and Donna Sussman  
Colleen Sweeney



Vickie and Alex Taylor  
The Fletcher Jones Foundation  
The Kleiner Cohen Foundation  
Sue Tsao  
Unitarian Universalist Community  
Church of Santa Monica  
Vectis Strategies LLC  
Catalina Joos Vergara  
Diana L. and Robert F. Walker  
Aviva Weiner  
Michelle Wild

**\$500 AND ABOVE**  
Anonymous  
Leticia Acosta  
Steven Alarcon  
Scott Altman  
Anthony Baratta  
Beauty Industry West  
Edith Korena Bernards  
Carol and Frank Biondi  
Christopher Bomba  
Jose A. and Julie Campos  
Chapman & Associates Charitable Foundation  
Andrew and Cheryl Charles  
Derrick Chevalier  
Joe Hutshing and Robin Coe-Hutshing  
Emquies Family Fund  
Gail and Michael Feuer  
Claude Goldenberg  
Jo Ann Kaplan  
Lillian Kimbell and Nathan Gardels  
Richard W. Kopenhefer  
Guy and Kendra Langer  
Betsy Lee-Myers  
Karen T. and Marshall H. Mathison  
Marcia M. and Jon W. Newby  
Quatro Design Group  
Jorge Sanchez

Michael J. Schmitt  
Karen and Joel Singer  
Southern California Committee of the National  
Museum of Women in the Arts  
Marc Spilo  
Melissa A. Swanson Fifield  
Teamsters Local Union No. 399  
The Capital Group Companies Charitable  
Foundation in honor of Andrei Muresianu  
Pat L. Walter  
Chadwick Womack

**\$250 AND ABOVE**  
Anonymous  
Claire and Leonard Allenstein  
Hugo A. Almeida  
Adeline Arjad  
Cecilia Ball  
Joseph and Judith Golden  
John F. Gonzalez  
Vance Grosser  
Maria H. Gutierrez  
Alexander Hall  
Harumi Hata  
Deborah B. Herrera  
Inland Empire United Way  
Rachel Iverson and Benjamin R. Mulcahy  
Elizabeth A. and Nicandro F. Juarez  
Melanie Kaloski  
Katherine Kehr  
Raymond R. Kepner  
Larry C. Kidwell  
Carolyn B. and Charles M. Knobler  
Zachary Lainer  
Maria Lapin  
Alan and Robin Lilien  
James H. Longley  
Laura Lopez-Lomeli  
Lynn D. Ludlam  
Emilia Lugo

Dylan Price  
Jay Ramsey  
Fredric and Beverly Reichel  
James Rothman  
Ned and Anna Marie Salcido  
Suzanne Singer  
Philip Soulanille  
Christine Steiner  
Susan Sterling  
Katheryn and Lowell C. Steward  
The University Corporation  
Vanessa and Mark Wittenberg  
Lisa and Elliot Zeelander

**\$100 AND ABOVE**  
Ben Aigboboh  
Giordano Alvarez  
Karia M. Alvarez  
Celeste Anlauf  
Fidel Argomaniz  
Sheila T. Bangs  
Roselyn Batcheller  
Bob's Big Boy  
Box Top \$ for Education  
Rosibel Chabolla  
Lily Y. Chu  
Shaun Clark  
Clark Construction Group  
Catherine H. Coleman  
James Connolly  
J.M. and Elizabeth Cooksey  
Peggy Cooper  
Linda M. Cowman  
Jeanne Cussac  
Steven C. Dalton  
Chava Danielson  
Robert Darwell  
Joyce Deep  
Andrew V. Eckert  
Edison International  
Employees Charity Organization of  
Northrop Grumman  
Soraya Esteva  
Mark Fairfield  
Peg and Richard Finch  
Nadia Fleury and Stuart Williamson  
Jay Franklin Fox  
Joy Garcia  
Joseph and Judith Golden  
John F. Gonzalez  
Vance Grosser  
Maria H. Gutierrez  
Alexander Hall  
Harumi Hata  
Deborah B. Herrera  
Inland Empire United Way  
Rachel Iverson and Benjamin R. Mulcahy  
Elizabeth A. and Nicandro F. Juarez  
Melanie Kaloski  
Katherine Kehr  
Raymond R. Kepner  
Larry C. Kidwell  
Carolyn B. and Charles M. Knobler  
Zachary Lainer  
Maria Lapin  
Alan and Robin Lilien  
James H. Longley  
Laura Lopez-Lomeli  
Lynn D. Ludlam  
Emilia Lugo

